



Whitikahu, 13 Lucien Place

Easy Country Living

This expansive 5 bedroom home set on a one acre site ticks all the boxes!

- Zoned for Rototuna High.
- Close to great local primary schools.
- 5 bedrooms plus office and 2 living areas spread over 268M2 (more or less).
- Large modern open plan kitchen at the hub of the home.
- Wood burner and heatpump.
- 2 bathrooms
- Internal access garage.
- 5x8M separate shed/ workshop with 3 phase power.
- 3 paddocks, orchard and a large greenhouse.
- Set down a quiet cul-de-sac and fully fenced with electric gates.
- Great location with easy access to Hamilton in a great community

With so much on offer here this property will not last long, so call now to avoid



Disclaimer: All information contained therein is gathered from relevant third parties sources. We cannot guarantee or give any warranty about the information provided. Interested parties must rely solely on their own enquiries.

SOLD

5

2

1

For Sale
By Negotiation

View
ljhooker.co.nz/7D2HFFH

Contact
David Best
0212237835
david@ljh.nz

LJ Hooker Ngaruawahia
(07) 824 8601
Twin Rivers Real Estate Limited

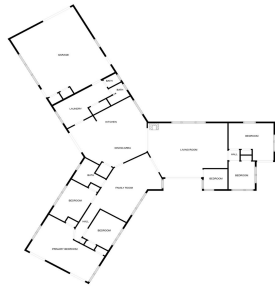
disappointment!

More About this Property

Property ID	7D2HFFH
Property Type	Lifestyle
House Size	268 m2
Land Area	4047 m2
Licensed Real Estate Agents (REAA2008)	

David Best 0212237835
Licensed Salesperson | david@ljh.nz

LJ Hooker Ngaruawahia (07) 824 8601
Twin Rivers Real Estate Limited
22 Galileo Street, NGARUAWAHIA NZ 3720
ngaruawahia.ljhooker.co.nz | info@ljh.nz



FLOOR PLAN CREATED BY CLUSTERS APP. MEASUREMENTS DERIVED DIRECTLY FROM LARIS. NOT NOT GUARANTEED.



Disclaimer: All information contained therein is gathered from relevant third parties sources.
We cannot guarantee or give any warranty about the information provided. Interested parties must rely solely on their own enquiries.

LJ Hooker Ngaruawahia
(07) 824 8601
Twin Rivers Real Estate Limited