



7 Panoramic Place, Whitfield

A Spectacular Whitfield Trophy Home on 5112sqm

An Architectural Masterpiece with sensational ocean and sunset views perched on a ridge, a contemporary sanctuary has been created redefining quiet luxury. This 5-bedroom, 4.5-bathroom haven in the heart of Whitfield is an original Eddie Oribin design with Jesse Bennett Studio extension and renovation that offers light-filled living spaces and effortless elegance with endless views and leafy aspects.

Set on one level, the minimalist design creates a continuous connection with sky and views, while the timeless interior palette plays on the beauty of the surrounding landscaped grounds and rainforest.


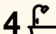
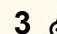
Framed by floor-to-ceiling glass and crafted from timber, concrete and curated textures, the home's generous proportions are designed for seamless indoor–outdoor living.

Each king-size bedroom captures its own memorable view of the ocean or rainforest, and the open plan living and dining overlooks the shimmering infinity pool.

On offer:

- Elegant, single residence with separate self-contained studio,

All information contained therein is gathered from relevant third parties sources. We cannot guarantee or give any warranty about the information provided. Interested parties must rely solely on their own enquiries.

5  4  3 

AUCTION

Sat 20th Jun @ 12:00AM

VIEW

By Appointment

AGENTS

Nadine Edwards
0423 602 606
nedwards@ljheh.com.au

AGENCY

LJ Hooker Cairns Edge Hill
(07) 4053 9999

 LJ Hooker

- infinity pool and sweeping views
- All king-size bedrooms feature built-in wardrobes
- All bathrooms are equipped with Nood Co basins, luxe quartz stone finishes and designer fixtures
- Main bedroom retreat occupies a separate wing, with an impressive ensuite with emerald quartz finishes, walk-in-robe, private balcony and ocean views
- Tasmanian Oak, Silky Oak and New Guinea Rosewood joinery, Shoji Japanese screens, Blackbutt timber and polished concrete floors and soft finishes throughout set a tranquil tone, while neutral and emerald tones are a pitch-perfect accent
- Open-plan lounge and dining room with integrated outdoor entertaining area offers effortless connection to nature
- Designer kitchen features a Dolomite island bench and bench tops, butler's pantry, ovens(x2) and induction cooktop
- A private sitting room off the main bedroom
- Triple carport

Upper Whitfield offers a private, exclusive, yet understated, lifestyle with leafy surrounds whilst being within close proximity to the Cairns CBD and Esplanade, Airports, sought after cafe's, restaurants and local amenities including frequent public transport, parklands, local primary school and kindergarten. Call to arrange your viewing today.

This exceptional Queensland property will be offered through an exclusive invitation-only auction campaign. Qualified purchasers are encouraged to register their interest for consideration.

Offers considered prior to Auction

This property is being sold by auction or without a price and therefore a price guide cannot be provided. The website may have filtered the property into a price bracket for website functionality purposes

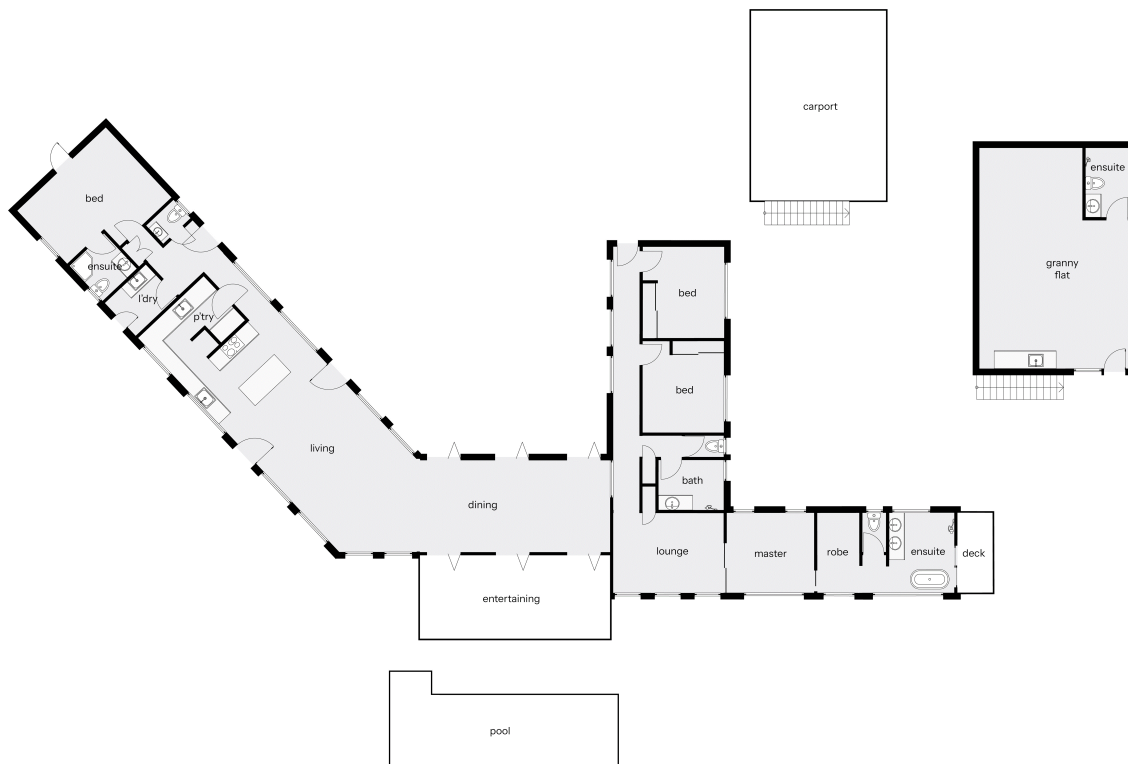
MORE DETAILS

Property ID	3BWHFMB
Property Type	House
Land Area	5112 m2
Including	Air Conditioning Toilets (1) Pool Deck Dishwasher Outdoor Entertaining Floorboards Built-in-Robes Secure Parking Fully Fenced Solar Panels

Nadine Edwards 0423 602 606
Director | nedwards@ljheh.com.au

LJ Hooker Cairns Edge Hill (07) 4053 9999
81 - 83 Woodward Street, EDGE HILL QLD 4870
cairnsedgehill.ljhooker.com.au | cairnsedgehill@ljheh.com.au





Whilst LJ Hooker Edge Hill has made every effort to ensure the accuracy of the floorplan contained here, measurements are approximate and no responsibility is taken for any error, omission or mis-statement. This plan is for illustration purposes only.