



4 Balzer Close, Whitfield

Charming Cottage on 1270m²; in the Heart of Whitfield




Start your day with choice. Whether it's a latte from The Nest or a flat white from Whitfield Bakery, this pocket of Whitfield has you perfectly placed.

Tucked away in a peaceful cul-de-sac with a leafy backdrop, this charming home positioned on a substantial 1270m²; block in one of Whitfield's most sought-after locations is a must to inspect!

Step inside and you'll find a ready to move into home that wears its history with pride. Polished floorboards, casement windows and an original but eye-catching kitchen.

The open-plan living and dining area is filled with natural light, seamlessly connected to the tiled front sunroom, an ideal space for relaxing or enjoying your morning coffee.

Three well-appointed bedrooms, each with built-in wardrobe and air conditioning.

3  1  1 

FOR SALE

Please Call

AGENTS

Nadine Edwards
0423 602 606
nedwards@ljheh.com.au

Harriet Donnelly
0417 160 171
harriet@ljheh.com.au

AGENCY

LJ Hooker Cairns Edge Hill
(07) 4053 9999

All information contained therein is gathered from relevant third parties sources.
We cannot guarantee or give any warranty about the information provided.
Interested parties must rely solely on their own enquiries.

 **LJ Hooker**

Modernised bathroom includes a walk-in shower and a separate toilet.

The rear covered entertaining area is the ideal place to put your feet up and relax.

A big backyard, accessible by wide side access, gives kids and pets space to run, with so much room for a shed, pool and to extend.

With Whitfield State School close by, and an approximate 10 minute drive to the Cairns CBD and Esplanade, quick access to the Northern Beaches, this address works just as well for families as it does for busy professionals.

This character-filled home offers a rare opportunity (held by the same family for 55 years) to enjoy the timeless charm of a classic Queensland home with the convenience of modern updates, Call to arrange your inspection today!

Auction On Site & Online Via Realtair.

4 October at 9:30am

- *Offers considered prior to Auction**

This property is being sold by auction or without a price and therefore a price guide cannot be provided. The website may have filtered the property into a price bracket for website functionality purposes

MORE DETAILS

Property ID	3XQGFMB
Property Type	House
Land Area	1270 m2
Including	Air Conditioning Outdoor Entertaining Floorboards Built-in-Robes Fully Fenced

Nadine Edwards 0423 602 606

Director | nedwards@ljheh.com.au

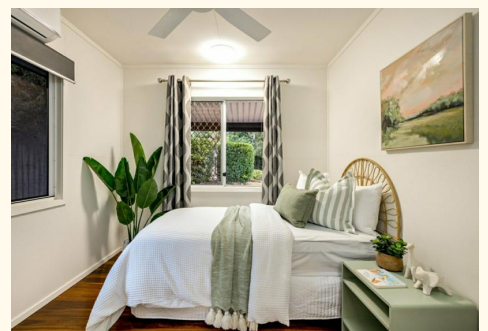
Harriet Donnelly 0417 160 171

Sales Associate to Nadine Edwards | harriet@ljheh.com.au

LJ Hooker Cairns Edge Hill (07) 4053 9999

81 - 83 Woodward Street, EDGE HILL QLD 4870

cairnsedgehill.ljhooker.com.au | cairnsedgehill@ljheh.com.au





Whilst LJ Hooker Edge Hill has made every effort to ensure the accuracy of the floorplan contained here, measurements are approximate and no responsibility is taken for any error, omission or mis-statement. This plan is for illustration purposes only.