

Whitfield, 32 Nolan Street

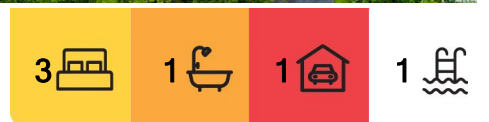
Charming Queenslander Cottage On 795sqm Block

Offering a tranquil retreat set on a leafy 795 sqm block, this home provides a peaceful and private lifestyle opportunity in the Tropics. With no immediate rear neighbours and only a seasonal creek behind, it ensures a serene atmosphere.

The enchanting lowset Queenslander boasts timeless features such as timber floors, casement windows, and high ceilings, creating a welcoming and elegant living space.

The open plan living and dining areas extends seamlessly onto the inviting front patio and rear undercover timber deck, offering ample space for relaxation and entertaining.

Surrounded by lush tropical gardens, the property attracts a variety of wildlife, including bush turkeys, green tree frogs, tawny frogmouth owls, kingfishers, sunbirds, and butterflies.



For Sale
Please Call

View
ljhooker.com.au/3WXXFMB

Contact
Nadine Edwards
0423 602 606
nedwards@ljheh.com.au
Harriet Donnelly
0417 160 171
harriet@ljheh.com.au



Disclaimer: All information contained therein is gathered from relevant third parties sources. We cannot guarantee or give any warranty about the information provided. Interested parties must rely solely on their own enquiries.

LJ Hooker Cairns Edge Hill
(07) 4053 9999

The central kitchen provides plenty of bench space and storage options, while the modernized bathroom includes both a separate bath and shower.

The private, lagoon-style in-ground pool is complemented by its own outdoor shower, securely fenced, and fully certified for pool safety.

The deep front lawn area is ideal for children, pets, or extra off-street parking, and has often been used for entertaining under the stars. The property also includes secure car accommodation, ample storage, and an extra-large garden shed.

Known as "The Butterfly Hideaway," this charming home is located in a sought-after area, just minutes from the best amenities of Edge Hill and Whitfield. It offers a relaxed and nature-filled lifestyle in the Tropics, perfect for those seeking comfort, privacy, and serenity.

Auction On Site & Online Via Realtair.

1 March at 9.30am

****Offers considered prior to Auction****

This property is being sold by auction or without a price and therefore a price guide cannot be provided. The website may have filtered the property into a price bracket for website functionality purposes.

More About this Property

Property ID	3WXXFMB
Property Type	House
Land Area	795 m2
Including	Air Conditioning Pool Deck Dishwasher Outdoor Entertaining Floorboards Built-in-Robes Secure Parking Remote Garage

Nadine Edwards 0423 602 606

Director | nedwards@ljheh.com.au

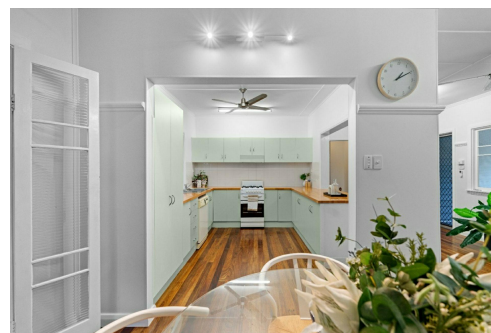
Harriet Donnelly 0417 160 171

Sales Associate to Nadine Edwards | harriet@ljheh.com.au

LJ Hooker Cairns Edge Hill (07) 4053 9999

81 - 83 Woodward Street, EDGE HILL QLD 4870

cairnsedgehill.ljhooker.com.au | cairnsedgehill@ljheh.com.au



Disclaimer: All information contained therein is gathered from relevant third parties sources. We cannot guarantee or give any warranty about the information provided. Interested parties must rely solely on their own enquiries.

**LJ Hooker Cairns Edge Hill
(07) 4053 9999**