



24 Hillview Crescent, Whitfield




Feel-Good Family Haven in Upper Whitfield

Perfectly positioned in one of Cairns' most sought-after suburbs, this stylish modernised residence delivers the ultimate in family living, combining space, versatility, and effortless style.

Bathed in natural light, the home's open-plan design flows seamlessly over three levels, encompassing approximately 295m² under roof, including an upper level of bedrooms, and a mid-level section of spacious living and dining area and a well-appointed modern kitchen, complete with generous bench space, quality appliances including induction cooktop, plenty of storage, and direct views to the sparkling in-ground pool. High ceilings and thoughtful design enhance the home's sense of openness, whilst large windows invite cooling breezes throughout.

Outdoor entertaining is provided by an undercover patio straight off the kitchen, the perfect place to entertain, relax, or watch the kids enjoy the pool.

The main residence features five bedrooms (including a generous master suite with ensuite), a study area, plus a separate air-conditioned rumpus room ideal as a media room or teenagers retreat.

5  4  2 

FOR SALE

Please Call

AGENTS

Nadine Edwards
0423 602 606
nedwards@ljheh.com.au

Harriet Donnelly
0417 160 171
harriet@ljheh.com.au

AGENCY

LJ Hooker Cairns Edge Hill
(07) 4053 9999

All information contained therein is gathered from relevant third parties sources.
We cannot guarantee or give any warranty about the information provided.
Interested parties must rely solely on their own enquiries.

 **LJ Hooker**

Adding to the appeal, the fifth bedroom has an ensuite and is positioned away from the other bedrooms on the lower level of the home, making it the ideal guest accommodation.

Practical features include air-conditioning, an internal laundry/fourth bathroom (with easy access to the pool), solar electricity system, and double car accommodation.

Set on a fenced, landscaped block with lush tropical gardens, this home offers a serene, family-friendly lifestyle. Within easy walking distance to both dog-friendly leafy Colin Penridge Park and Jack Brennan Park equipped with a children's playground.

Enjoy the unbeatable convenience of the location, with Cairns CBD and both Domestic and International Airports only a short drive away. Local favourites easily accessed on foot include Woodward Street Bakery, Edge Hill Bowls Club, the 'Arrow' walking tracks, Tanks Arts Centre, and the bustling Collins Avenue cafe and dining precinct, all just moments from your doorstep.

This is more than a home, it's a lifestyle of comfort, flexibility, and connection in one of Cairns most desirable locations.

Inspect today and fall in love with the Whitfield way of life.

MORE DETAILS

Property ID	3XURFMB
Property Type	House
Land Area	719 m2
Including	Study Air Conditioning Pool Balcony Dishwasher Outdoor Entertaining Floorboards Built-in-Robes Solar Panels

Nadine Edwards 0423 602 606

Director | nedwards@ljheh.com.au

Harriet Donnelly 0417 160 171

Sales Associate to Nadine Edwards | harriet@ljheh.com.au

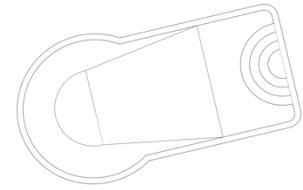
LJ Hooker Cairns Edge Hill (07) 4053 9999

81 - 83 Woodward Street, EDGE HILL QLD 4870

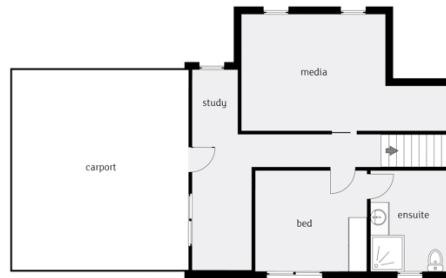
cairnsedgehill.ljhooker.com.au | cairnsedgehill@ljheh.com.au



Upstairs.



Downstairs.



Whilst LJ Hooker Edge Hill has made every effort to ensure the accuracy of the floorplan contained here, measurements are approximate and no responsibility is taken for any error, omission or mis-statement. This plan is for illustration purposes only.