

## Whitfield, 18 Norris Street

First Time Offered to the Market....

Set on a spacious 722sqm block in the sought-after Whitfield, this solid double-storey home offers panoramic mountain views, and a fantastic opportunity for family living.

The upper-level captures the cool breezes and an abundance of natural light and features open-plan living and dining area, a well-appointed central kitchen, three bedrooms, and a bathroom, with a full length undercover deck at the front accessible from the living and the main bedroom.

Downstairs, has a separate bedroom and separate large rumpus room (complete with bathroom) - plus additional room for storage or further development into self-contained accommodation or more bedrooms.

Practical features include air-conditioning, an internal laundry, secure car accommodation for two vehicles (plus further off-street parking) and a handyman's shed.



**Disclaimer:** All information contained therein is gathered from relevant third parties sources. We cannot guarantee or give any warranty about the information provided. Interested parties must rely solely on their own enquiries.

4

2

2

1

**For Sale**  
Please Call

**View**  
[ljhooker.com.au/3WKWFMB](http://ljhooker.com.au/3WKWFMB)

**Contact**  
**Nadine Edwards**  
0423 602 606  
[nedwards@ljheh.com.au](mailto:nedwards@ljheh.com.au)  
**Harriet Donnelly**  
0417 160 171  
[harriet@ljheh.com.au](mailto:harriet@ljheh.com.au)

**LJ Hooker Cairns Edge Hill**  
**(07) 4053 9999**



For outdoor living, the property boasts a large private in-ground pool. The fenced rear yard offers plenty of lawn space away from the pool area - perfect for children and pets to play.

Conveniently located within easy walking distance to local shops, public transport and Whitfield Primary School and Kindergarten and just moments from Cairns CBD, domestic and international airports, Edge Hill's vibrant Hub of shops and cafes, the Botanic Gardens, and the Tanks Precinct, this property provides a rare chance to create your dream home in one of Cairns' most desirable suburbs. Call to arrange your inspection

## More About this Property

<b>Property ID</b>	3WKWFMB
<b>Property Type</b>	House
<b>Land Area</b>	722 m <sup>2</sup>
<b>Including</b>	Air Conditioning Pool Deck Dishwasher Outdoor Entertaining Built-in-Robes Secure Parking

**Nadine Edwards 0423 602 606**

Director | nedwards@ljheh.com.au

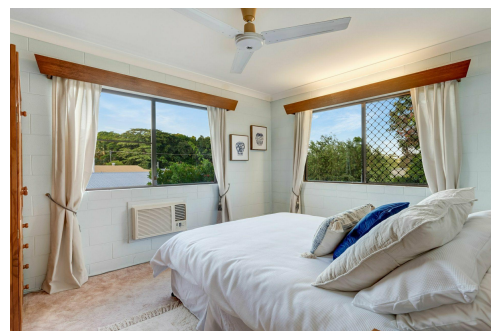
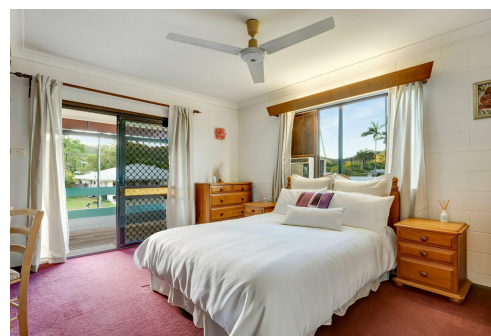
**Harriet Donnelly 0417 160 171**

Sales Associate to Nadine Edwards | harriet@ljheh.com.au

**LJ Hooker Cairns Edge Hill (07) 4053 9999**

81 - 83 Woodward Street, EDGE HILL QLD 4870

cairnsedgehill.ljhooker.com.au | cairnsedgehill@ljheh.com.au

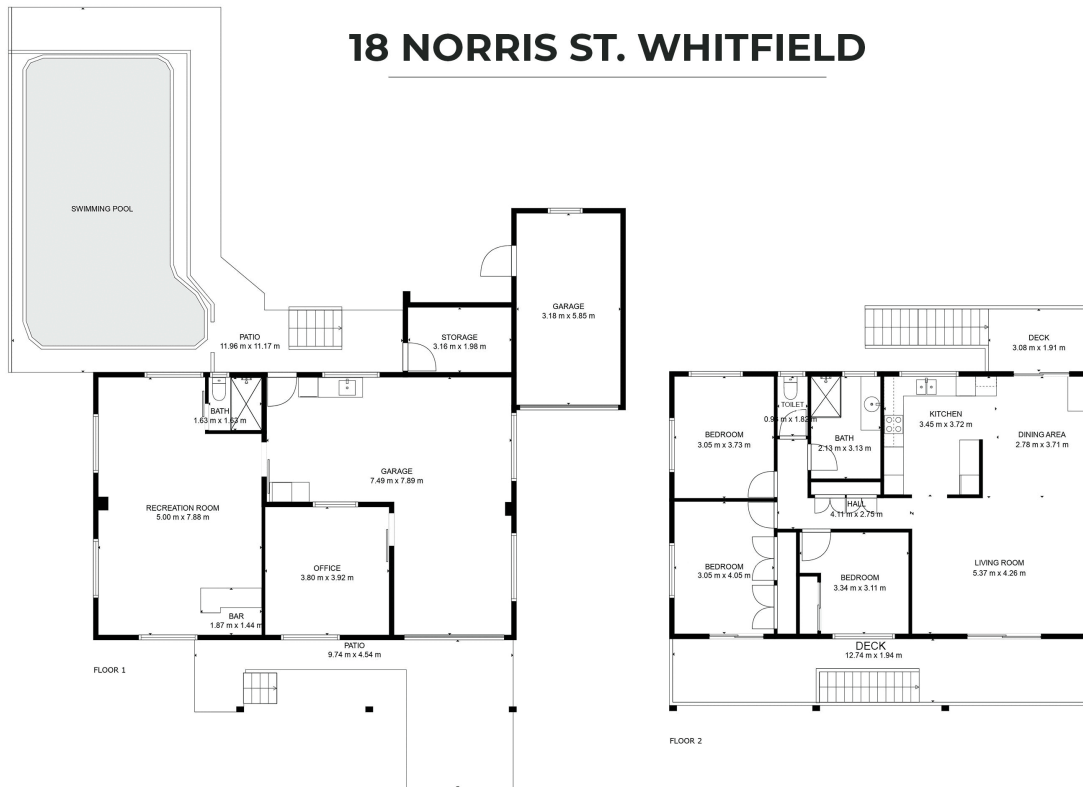


**Disclaimer:** All information contained therein is gathered from relevant third parties sources.

We cannot guarantee or give any warranty about the information provided. Interested parties must rely solely on their own enquiries.

**LJ Hooker Cairns Edge Hill  
(07) 4053 9999**

## 18 NORRIS ST. WHITFIELD



Please note the site plan and floor plans are for marketing purposes and are to be used as a guide only.  
Measurements are approximate and should not be relied on.