



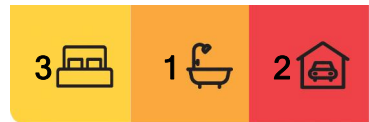
Whitfield, 16 Trucano Close

Entry Level Single-Level Home with Pool

Discover the perfect balance of comfort and convenience in this well-proportioned single-level home, set on a generous 786sqm block in sought-after Whitfield.

Property Highlights:

- **Spacious Design:** Featuring 13-block-high walls and a tiled open-plan living and dining area, this home offers a sense of space and style.
- **Well-Appointed Kitchen:** A large, functional kitchen perfect for family meals or entertaining guests.
- **Comfortable Living:** Includes three bedrooms (each with built-in wardrobe), one bathroom, security screens, and easy indoor-outdoor flow.
- **Outdoor Entertaining:** Relax or host gatherings in the undercover patio, conveniently adjoining the double car accommodation.
- **Lifestyle Features:** Enjoy a sparkling pool, perfect for summer days. The pool is



For Sale
Please Call

View
ljhooker.com.au/3WT6FMB

Contact
Nadine Edwards
0423 602 606
nedwards@ljheh.com.au

Harriet Donnelly
0417 160 171
harriet@ljheh.com.au



Disclaimer: All information contained therein is gathered from relevant third parties sources. We cannot guarantee or give any warranty about the information provided. Interested parties must rely solely on their own enquiries.

LJ Hooker Cairns Edge Hill
(07) 4053 9999

separately fenced allowing plenty of lawn area for children and pets to play.

Prime Location:

This property is within walking distance of a local cafe, public transport, a primary school, and a kindergarten, making it ideal for families and professionals alike.

With double car accommodation and plenty of yard space, this home offers both practicality and leisure in a prime location.

Contact us today for more information or to arrange a viewing.

Auction On Site & Online Via Realtair.

30 January at 5.30PM

****Offers considered prior to Auction****

This property is being sold by auction or without a price and therefore a price guide cannot be provided. The website may have filtered the property into a price bracket for website functionality purposes.

More About this Property

Property ID	3WT6FMB
Property Type	House
Land Area	786 m2

Nadine Edwards 0423 602 606

Director | nedwards@ljheh.com.au

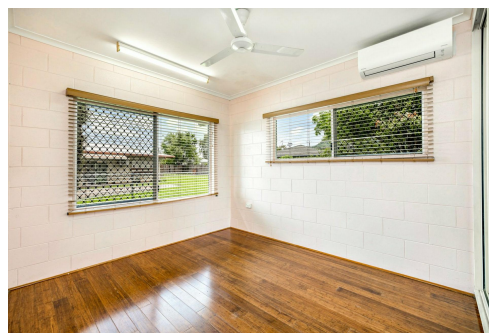
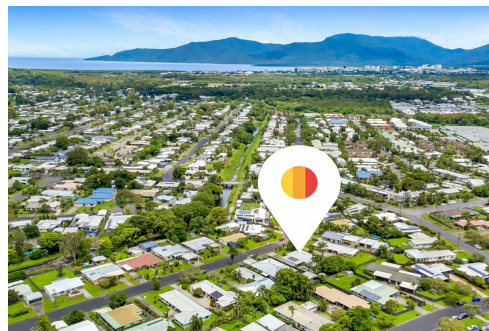
Harriet Donnelly 0417 160 171

Sales Associate to Nadine Edwards | harriet@ljheh.com.au

LJ Hooker Cairns Edge Hill (07) 4053 9999

81 - 83 Woodward Street, EDGE HILL QLD 4870

cairnsedgehill.ljhooker.com.au | cairnsedgehill@ljheh.com.au



Disclaimer: All information contained therein is gathered from relevant third parties sources.

We cannot guarantee or give any warranty about the information provided. Interested parties must rely solely on their own enquiries.

**LJ Hooker Cairns Edge Hill
(07) 4053 9999**



Whilst LJ Hooker Cairns Edge Hill has made every effort to ensure the accuracy of the floorplan contained here, measurements are approximate and no responsibility is taken for any error, omission or mis-statement. This plan is for illustration purposes only.