



Whitfield, 14 Bel-Air Drive

Your Dream Lifestyle Awaits & Where Luxury Meets Tropical Charm

Step into a residence like no other, where architectural brilliance meets breathtaking surroundings.

This stunning 9 years old Upper Whitfield home redefines elegance, seamlessly blending indoor and outdoor living to celebrate the beauty of the tropical lifestyle.

With unparalleled views of the city and mountains, this is more than just a home—it's a sanctuary of style and sophistication.

The heart of the home is a sleek, modern kitchen designed for those who love to entertain. With premium appliances, ample storage, and a contemporary aesthetic, it's as functional as it is beautiful.



For Sale
Offers Over \$1,195,000

View
By Appointment

Contact
Nadine Edwards
0423 602 606
nedwards@ljheh.com.au
Harriet Donnelly
0417 160 171
harriet@ljheh.com.au



Disclaimer: All information contained therein is gathered from relevant third parties sources. We cannot guarantee or give any warranty about the information provided. Interested parties must rely solely on their own enquiries.

LJ Hooker Cairns Edge Hill
(07) 4053 9999

Separated open-plan living and dining areas flow effortlessly, creating a sense of space and connection, perfect for family living or hosting guests.

Evenings here are nothing short of magical. Imagine sitting on your balcony, overlooking the twinkling city lights while enjoying the cool, refreshing breezes.

The luxurious master suite is a private retreat, complete with a spacious ensuite and a walk-in robe that adds a touch of indulgence to daily life. Upstairs, three additional bedrooms offer comfort and style, thoughtfully serviced by a large, well-appointed main bathroom with separate shower and bath tub.

On the lower level, connected by internal staircase, a multi-purpose room (serviced by a bathroom on this level) opens the door to endless possibilities. Whether it becomes a home theatre, guest wing, or creative studio, this space is ready to adapt to your lifestyle.

Outside, the home is set on an elevated, fully fenced 801m² block surrounded by lush, established gardens. Entry is by remote control gate to ensure privacy and security, with plenty of room for further off-street parking and add your dream pool!

Practicality meets luxury with a spacious double garage that includes an integrated storeroom (and internal access into the home), ensuring every need is met.

Other practical features internal laundry, include solar panels, security screens, air conditioning and ample storage options (including secure storage space underneath the home).

Positioned in one of Upper Whitfield's most sought-after hillside locations, this home offers not just a residence but a lifestyle of prestige, comfort, and breathtaking beauty.

Opportunities to own a property of this calibre are rare. Don't let this masterpiece slip through your fingers—make it yours today and elevate your living to extraordinary heights.

More About this Property

Property ID	3WWFFMB
Property Type	House
Land Area	801 m ²
Including	Ensuite Study Air Conditioning Balcony Deck Dishwasher Outdoor Entertaining Workshop Built-in-Robes Fully Fenced Remote Garage Solar Panels

Nadine Edwards 0423 602 606

Director | nedwards@ljheh.com.au

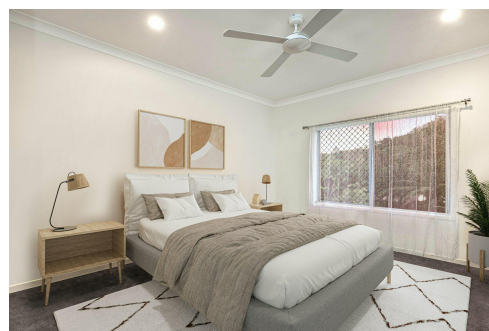
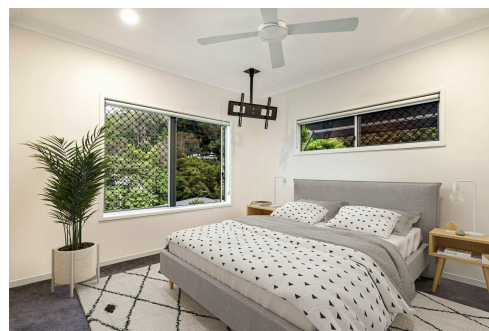
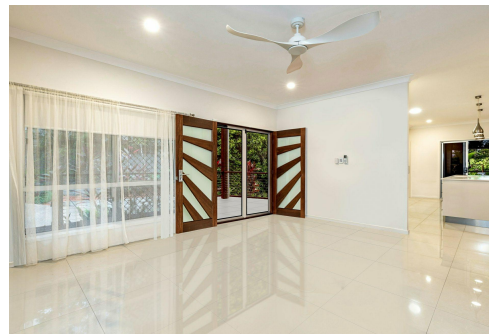
Harriet Donnelly 0417 160 171

Sales Associate to Nadine Edwards | harriet@ljheh.com.au

LJ Hooker Cairns Edge Hill (07) 4053 9999

81 - 83 Woodward Street, EDGE HILL QLD 4870

cairnsedgehill.ljhooker.com.au | cairnsedgehill@ljheh.com.au



Disclaimer: All information contained therein is gathered from relevant third parties sources.

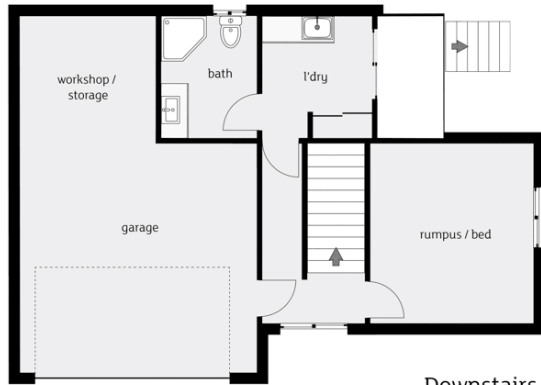
We cannot guarantee or give any warranty about the information provided. Interested parties must rely solely on their own enquiries.

LJ Hooker Cairns Edge Hill
(07) 4053 9999

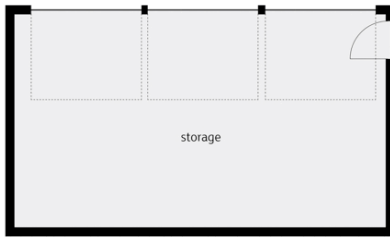
Upstairs.



Downstairs.



Basement.



Whilst LJ Hooker Edge Hill has made every effort to ensure the accuracy of the floorplan contained here, measurements are approximate and no responsibility is taken for any error, omission or mis-statement. This plan is for illustration purposes only.