

Whitfield, 14-16 Kevin Street

Cool Comfort in the Tropics

Nestled on a generous 1156 sqm block of lush, usable grounds in one of Cairns' most sought-after suburbs, this family home offers an ideal blend of space, comfort, and functionality, featuring the rare convenience of four bedrooms all on one level.

This spacious property offers multiple living areas, including a welcoming lounge, dining area, and versatile media or multipurpose room – ideal for everyday family life and seamless entertaining.

The central kitchen, finished with timber cabinetry, granite countertops, breakfast bar and a dishwasher, is perfectly positioned to serve all indoor and outdoor areas and offers stunning views of the pool and garden, combining beauty with practicality.

The striking internal timber feature staircase leads to the upper level, where four generously sized, air-conditioned bedrooms await, each offering scenic views. The master



For Sale
Please Call

View
ljhooker.com.au/3WKUFMB

Contact
Nadine Edwards
0423 602 606
nedwards@ljheh.com.au
Harriet Donnelly
0417 160 171
harriet@ljheh.com.au



Disclaimer: All information contained therein is gathered from relevant third parties sources. We cannot guarantee or give any warranty about the information provided. Interested parties must rely solely on their own enquiries.

LJ Hooker Cairns Edge Hill
(07) 4053 9999

suite includes a private shower room and walk-in robe. Two of the bedrooms open onto the full-length front veranda, perfect for enjoying cool breezes and the picturesque outlook over the surrounding mountains.

An undercover patio provides the ideal setting for al fresco dining, with a serene outlook over the established private garden. The fully enclosed backyard is perfect for families and pet owners, featuring a fenced sparkling in ground pool, vast flat lawn and a shaded sandpit with soft-fall surrounds.

Additional conveniences include an internal laundry/utility room, a downstairs powder room, an attached double garage with remote access and storeroom.

Built with a solid concrete slab and brick veneer construction, this home also boasts a recently installed 13.3kW solar system with two 5kW inverters.

Located close to the vibrant hubs of Edge Hill and Whitfield, this property offers quick access to local parks with playgrounds, popular shops, cafes, the Botanic Gardens, scenic walking trails, and the Cairns CBD and airport.

This is a rare opportunity to settle into a prized community and enjoy the relaxed Cairns lifestyle. Call today to arrange your viewing.

Fun fact: Featured as "House of the Week" in The Australian Women's Weekly in January 1971, the original owners designed this home to capture 'every possible evening breeze'.

Auction On Site & Online Via Realtair.

07/12/2024 at 9:30am

****Offers considered prior to Auction****

This property is being sold by auction or without a price and therefore a price guide cannot be provided. The website may have filtered the property into a price bracket for website functionality purposes



LJ Hooker Cairns Edge Hill
(07) 4053 9999

Disclaimer: All information contained therein is gathered from relevant third parties sources. We cannot guarantee or give any warranty about the information provided. Interested parties must rely solely on their own enquiries.

More About this Property

Property ID	3WKUFMB
Property Type	House
Land Area	1156 m ²
Including	Ensuite Air Conditioning Pool Balcony Dishwasher Outdoor Entertaining Workshop Built-in-Robes Secure Parking Fully Fenced Remote Garage Solar Panels 13.3kW solar system with two 5kW inverters
Sandpit	Shaded

Nadine Edwards 0423 602 606

Director | nedwards@ljheh.com.au

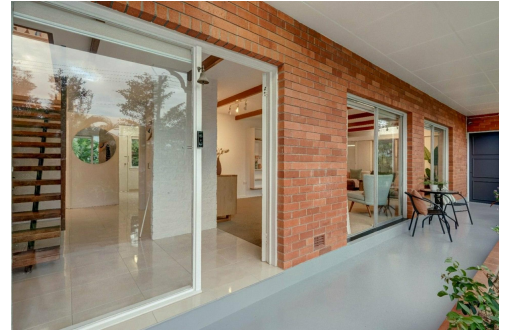
Harriet Donnelly 0417 160 171

Sales Associate to Nadine Edwards | harriet@ljheh.com.au

LJ Hooker Cairns Edge Hill (07) 4053 9999

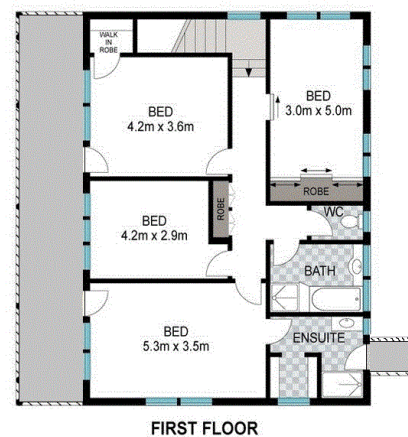
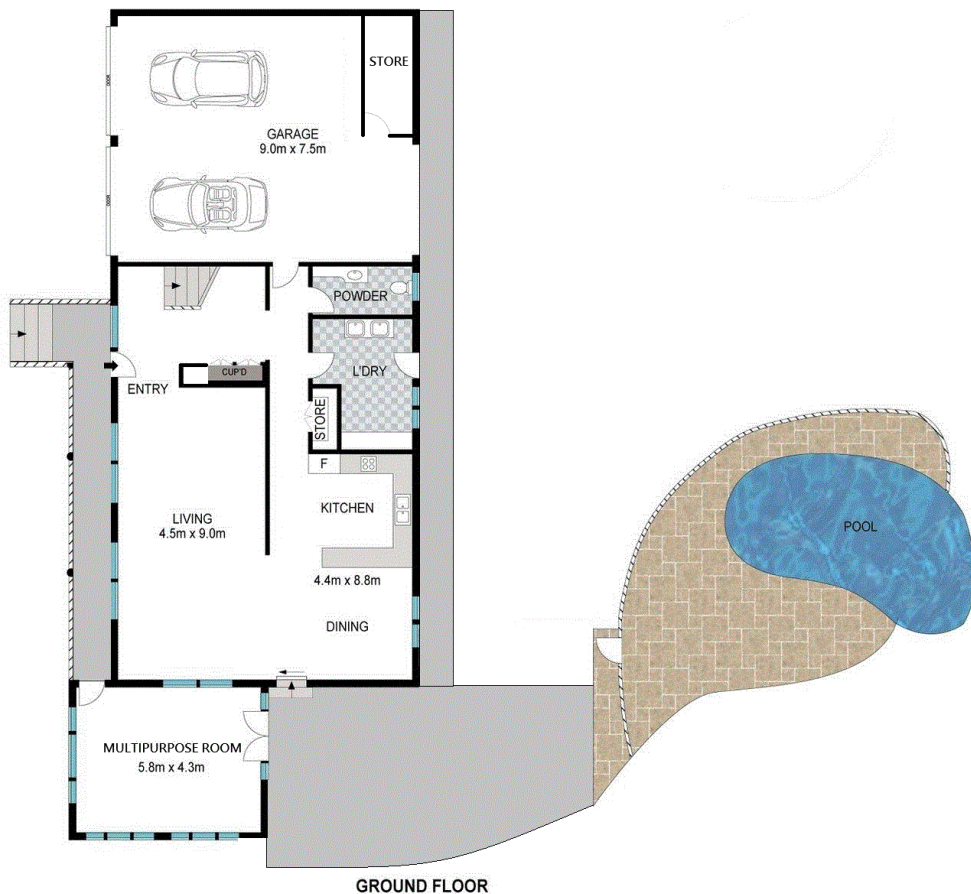
81 - 83 Woodward Street, EDGE HILL QLD 4870

cairnsedgehill.ljhooker.com.au | cairnsedgehill@ljheh.com.au



Disclaimer: All information contained therein is gathered from relevant third parties sources. We cannot guarantee or give any warranty about the information provided. Interested parties must rely solely on their own enquiries.

**LJ Hooker Cairns Edge Hill
(07) 4053 9999**



INT: 306 m²
EXT: 127 m²

Scale in meters. Indicative only. Dimensions are approximate. All information contained herein is gathered from sources we believe to be reliable. However, we cannot guarantee its accuracy and interested persons should rely on their own enquiries.

14-16 Kevin Street, Whitfield