



12 Nolan Street, Whitfield

Whitfield Queenslander with Pool and Flexible Living Options

Positioned in the highly sought-after suburb of Whitfield, this expansive residence on a generous 829m² block offers versatile living, ideal for large families or multi-generational arrangements.

Traditional features have been retained upstairs with high ceilings, timber flooring and casement windows, some showcasing beautiful stained-glass detail.

The upstairs floor plan offers formal lounge and dining spaces, large kitchen with meals area, three bedrooms, office/fourth bedroom space and a large family-sized bathroom complete with large full length rear verandah that overlooks the sparkling pool and leafy backdrop.

The well-appointed kitchen with ample storage and countertop space including island bench makes meal preparation and entertaining a breeze with French doors allowing easy access to the rear verandah.

The lower level is fully enclosed and offers separate studio accommodation with a kitchenette, bathroom and both external and internal entry - perfect for extended family or guests. Additionally,

4  2  2 

FOR SALE

Please Call

AGENTS

Nadine Edwards
0423 602 606
nedwards@ljheh.com.au

Harriet Donnelly
0417 160 171
harriet@ljheh.com.au

AGENCY

LJ Hooker Cairns Edge Hill
(07) 4053 9999

All information contained therein is gathered from relevant third parties sources.
We cannot guarantee or give any warranty about the information provided.
Interested parties must rely solely on their own enquiries.

 **LJ Hooker**

there are two further tiled rooms on this level and a storage/workshop space.

At the rear of the garden, a freestanding spacious lined shed with kitchenette adds further flexibility for teenagers retreat, multi-generational living or work from home opportunities.

The enormous in ground pool will cool off the largest of families throughout summer and is surrounded by timber decking and has an undercover entertainment area adjacent for guardians to enjoy and keep a watchful eye.

Backing onto an easement with no rear neighbours, this home combines space, privacy and lifestyle in one of Cairns' most desirable residential areas.

Within easy walking distance to the Woodward Street Bakery and public transport, and only moments to the Edge Hill 'Hub' of shops, Edge Hill Bowls Club, and local primary schools, book your inspection today to experience all that this exceptional property has to offer.

Auction On Site & Online Via Realtair.

20/09/2025 at 9:30am

- *Offers considered prior to Auction**

This property is being sold by auction or without a price and therefore a price guide cannot be provided. The website may have filtered the property into a price bracket for website functionality purposes

MORE DETAILS

Property ID	3XNTFMB
Property Type	House
Land Area	829 m2
Including	Study Pool Deck Outdoor Entertaining Floorboards Workshop Fully Fenced

Nadine Edwards 0423 602 606

Director | nedwards@ljheh.com.au

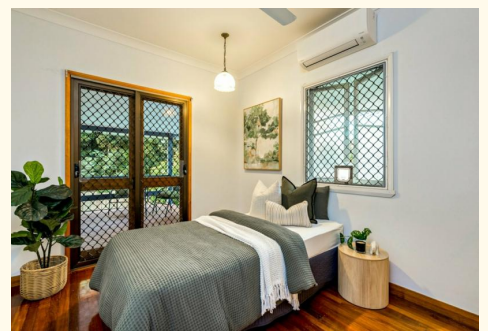
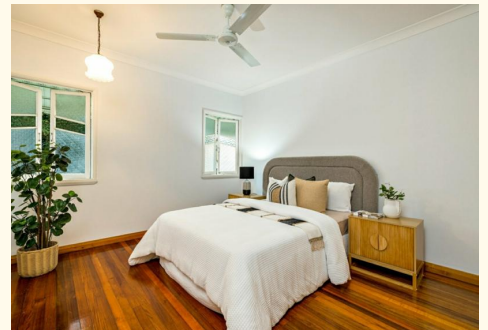
Harriet Donnelly 0417 160 171

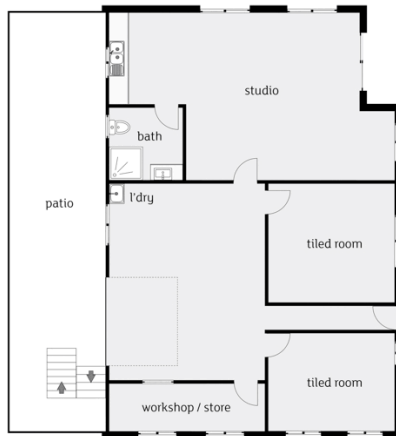
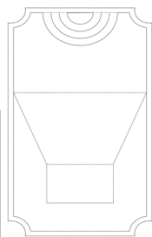
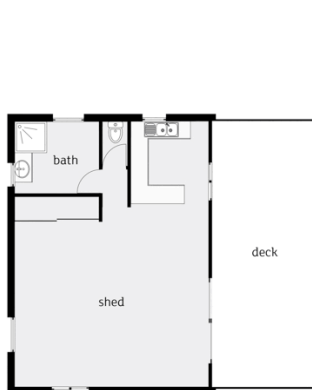
Sales Associate to Nadine Edwards | harriet@ljheh.com.au

LJ Hooker Cairns Edge Hill (07) 4053 9999

81 - 83 Woodward Street, EDGE HILL QLD 4870

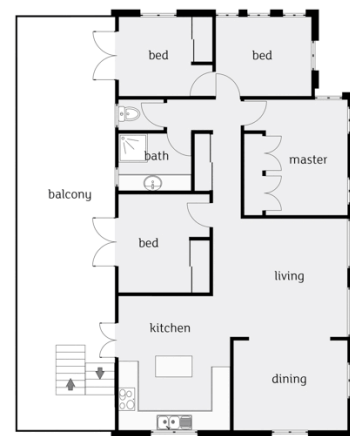
cairnsedgehill.ljhooker.com.au | cairnsedgehill@ljheh.com.au





Downstairs.

Upstairs.



Whilst LJ Hooker Edge Hill has made every effort to ensure the accuracy of the floorplan contained here, measurements are approximate and no responsibility is taken for any error, omission or mis-statement. This plan is for illustration purposes only.