



118 Hillview Crescent, Whitfield

Unlock the Potential in Prestigious Whitfield

Nestled within one of Cairns most desirable suburbs, this elevated double storey residence presents a rare opportunity to secure a substantial 809m² parcel of land and transform a home brimming with potential into something truly special.

Positioned amongst established homes, this property offers the perfect foundation for renovators, investors, and visionary buyers eager to capitalise.

The upper level is designed for comfortable family living, featuring three bedrooms, a family bathroom, a modernised kitchen, and open plan living and dining spaces that connect seamlessly to a breezy balcony overlooking the surrounding greenery.

Downstairs offers exceptional versatility with a fourth bedroom and a generous multipurpose space that could easily become a teenagers retreat, home office, guest accommodation, media room, or dual living setup. Adding further appeal is a second bathroom space ready for completion, providing an exciting opportunity to enhance both functionality and value.

4 1 3

FOR SALE

Offers over \$949,000

VIEW

Sat 11th Jul @ 12:00PM - 12:30PM

AGENTS

Nadine Edwards

0423 602 606

nedwards@ljheh.com.au

AGENCY

LJ Hooker Cairns Edge Hill

(07) 4053 9999

All information contained therein is gathered from relevant third parties sources. We cannot guarantee or give any warranty about the information provided. Interested parties must rely solely on their own enquiries.

LJ Hooker

Outside, the expansive 809m² allotment offers endless possibilities. Whether you envision lush tropical gardens, a sparkling swimming pool, additional outdoor entertaining areas, or further improvements (STCA), there's ample room to bring your vision to life.

Located just moments from quality schools, local cafes, the Edge Hill Hub, parklands, walking trails, and only minutes from the Cairns CBD, this is a chance to secure a foothold in one of the city's most coveted lifestyle locations.

Property Highlights

- Generous 809m² allotment
- Elevated split level design
- Four bedrooms
- Flexible multipurpose room downstairs
- Open plan living and dining area
- Balcony capturing cooling breezes
- Second bathroom space ready for completion
- Separate laundry
- Large covered carport
- Outstanding renovation and value add opportunity
- Blue chip Whitfield location

Opportunities to secure a property with this much potential in Whitfield are few and far between. Renovate, reimagine, and reap the rewards in one of Cairns' most enduringly popular suburbs.

Call today to arrange your inspection.

MORE DETAILS

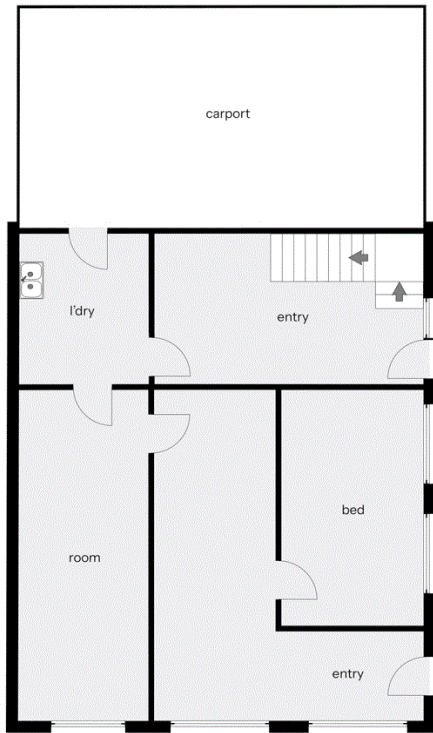
Property ID	3YPVFMB
Property Type	House
Land Area	809 m2
Including	Air Conditioning Toilets (1) Deck Dishwasher Fully Fenced

Nadine Edwards 0423 602 606
Director | nedwards@ljheh.com.au

LJ Hooker Cairns Edge Hill (07) 4053 9999
81 - 83 Woodward Street, EDGE HILL QLD 4870
cairnsedgehill.ljhooker.com.au | cairnsedgehill@ljheh.com.au



Downstairs.



Upstairs.

Whilst LJ Hooker Edge Hill has made every effort to ensure the accuracy of the floorplan contained here, measurements are approximate and no responsibility is taken for any error, omission or mis-statement. This plan is for illustration purposes only.