

265 Whale Beach Road, Whale Beach

Beachfront Sanctuary Designed by Award Winning Architect Alex Popov

Combining refined elegance with relaxed beachfront living, this light-filled sanctuary designed by award winning architect Alex Popov, occupies one of the most coveted positions on Whale Beach. Set across three levels, the spacious home is perfectly oriented to capture Whale Beach panoramas at every turn, with the rare luxury of direct beach access.

"Popov's signature design ensures extensive internal and external flow, with open-plan living areas seamlessly connecting to expansive timber decks, lush gardens, and the sun-drenched pool terrace. Full-height glass doors dissolve the boundary between indoors and outdoors, immersing every space in natural light and coastal breezes in this absolute beachfront sanctuary."

Stepping inside the residence, you're immediately greeted by sweeping ocean and beach vistas and the soothing sea breeze, evoking a deep sense of calm. Relaxed yet elevated interiors feature timber flooring and luxurious marble finishes. Seamless indoor-outdoor living is embraced through three expansive decks, a sunlit

5 5 4

FOR SALE

Expressions of Interest

VIEW

By Appointment

AGENTS

David Edwards
0415 440 044
dedwards@ljhpb.com.au

BJ Edwards
0420 304 140
bjedwards@ljhpb.com.au

AGENCY

LJ Hooker Palm Beach
(02) 9974 5999

All information contained therein is gathered from relevant third parties sources.
We cannot guarantee or give any warranty about the information provided.
Interested parties must rely solely on their own enquiries.

LJ Hooker

pool terrace, private beachfront entertaining area, and direct beach access—each inviting endless hours of outdoor living.

Almost every room in the house enjoys uninterrupted views of the crystal-clear ocean, golden sand and verdant coastal landscape. Floor-to-ceiling glass doors frame coastal views and the skillion roofline with clerestory windows draws natural light deep into the interiors while framing the dramatic cliff face. Operable shutters and private, retreat-like areas allow for privacy and tranquility when desired.

Capturing the essence of sophisticated coastal living, this property is the ultimate beachfront retreat, offering the space and comfort of a full-time residence and the ease of a luxurious holiday escape.

Featuring:

- Timeless Whale Beach home, ideal for a family residence or an iconic Northern Beaches weekender
- Featured in multiple beach house publications and feature articles.
- Breathtaking views of Whale Beach and surrounds at each level and the beachfront deck
- Private stairway to the beach and direct access to 'The Wedge,' Whale Beach's renowned surf break
- Adjacent to an approx. 2,000 m² nature reserve, ensuring exceptional privacy and a sense of natural seclusion
- Designed by award winning architect, Alex Popov
- Distinctive beach house aesthetic: high ceilings, brush box timber floors, open plan, indoor-outdoor living, flooded with natural light
- Pristine pool and deck overlook the beach, providing a peaceful retreat for gatherings large or small
- Multiple indoor/outdoor entertaining areas; perfect for year-round al fresco living or simply soaking in the views
- Well-designed contemporary kitchen features modern appliances, luxurious dark marble benchtop and splashback, gas stove, and walk-in pantry
- Open-plan kitchen, living, and dining area with soaring ceilings flows to a covered terrace with magnificent beach views
- Luxurious master suite with generous ensuite, walk-in robe, and private access to deck
- Three additional bedrooms plus a guest suite with a walk-in-robe and attached gym, each with generous proportions and built in storage
- Five well-appointed bathrooms, combining both style and functionality

- Dynamic middle-level houses bedrooms/guest accommodation, bathrooms, a family room with an attached kitchen, a study, a gym, an internal laundry, and a separate covered timber deck
- Lower level opens to the pool and houses a rumpus room, storage space and an additional bathroom
- Ample storage internally and externally throughout
- Double lock-up garage, additional space for two cars on driveway, and off-street parking add convenience to this exclusive property

MORE DETAILS

Property ID	BR5F6Z
Property Type	House
Land Area	1214.6 m2
Including	Beach Front Ocean Views Pool Prestige Homes Water Views

David Edwards 0415 440 044

Director | Licensee | David Edwards Palm Beach Realty Pty Ltd CLN
348342â€ | dedwards@ljhpb.com.au

BJ Edwards 0420 304 140

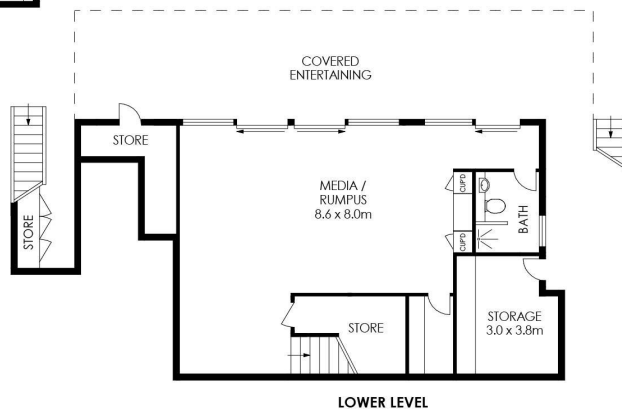
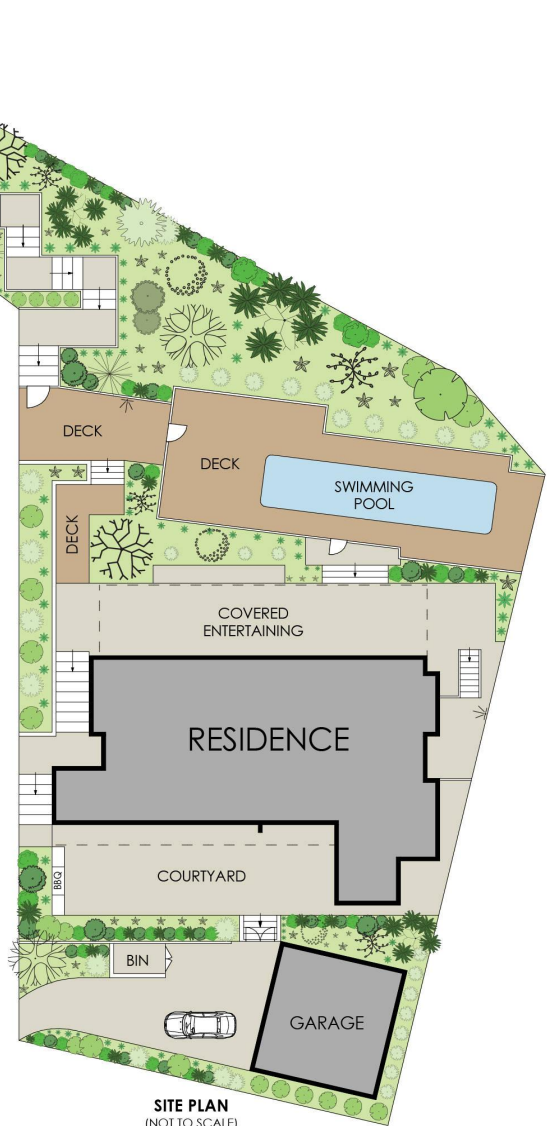
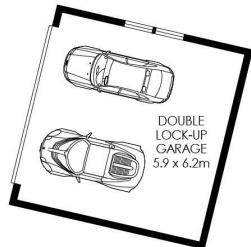
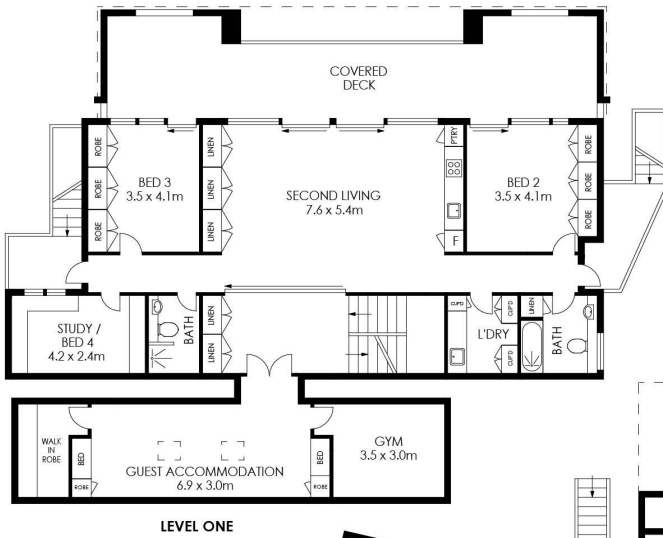
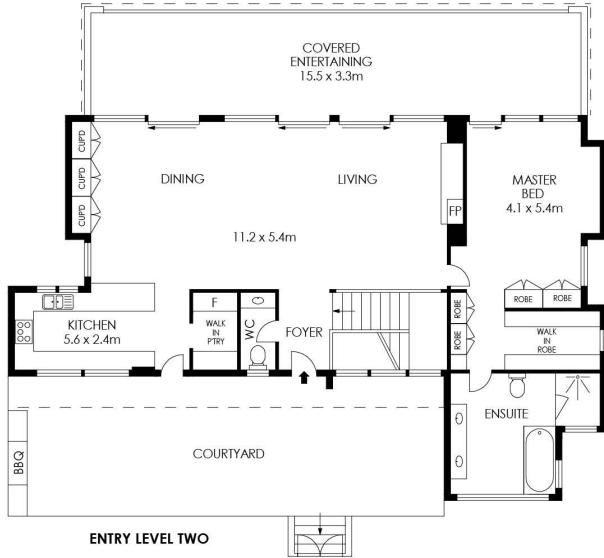
Licensed Real Estate Agent | bjedwards@ljhpb.com.au

LJ Hooker Palm Beach (02) 9974 5999

1073 Barrenjoey Road, PALM BEACH NSW 2108
palmbeach.ljhooker.com.au | office@ljhpb.com.au



WHALE BEACH



APPROX. INTERNAL AREA = 421 m²
 APPROX. EXTERNAL AREA = 213 m²
 TOTAL = 634 m²
 LAND SIZE = 1214.6 m²

PLANS SHOWN ONLY INDICATIVE OF LAYOUT. DIMENSIONS ARE APPROXIMATE.



265 Whale Beach Road, Whale Beach

LJ Hooker

All information contained therein is gathered from relevant third parties sources.
 We cannot guarantee or give any warranty about the information provided.
 Interested parties must rely solely on their own enquiries.

LJ Hooker