




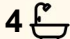
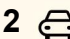
254 Whale Beach Road, Whale Beach

Visionary Design, Electrified Home with Unobstructed Beach Views

A masterpiece of visionary design, this extraordinary beachside home effortlessly combines breathtaking views, refined luxury, and unparalleled privacy. Nestled mere steps from the sand, the property exemplifies modern coastal living, shaped by an inspired collaboration between renowned architect Clinton Murray and Coddington Constructions.

Walls of glass frame awe-inspiring vistas, allowing the natural beauty of Whale Beach to take center stage. Seamlessly integrated outdoor spaces blend with the landscape, creating a harmonious connection between architecture and nature.

In 2024, the home underwent a transformative upgrade, headlined by the addition of an Italian-made panoramic glass lift offering sweeping views over the surf below. This significant enhancement was accompanied by meticulous updates, including a new marble laundry, rewiring, replacement of windows and skylights, and the introduction of smart electrification throughout the home. These improvements ensure a modern, sustainable, and future-ready living experience.

4  4  2 

FOR SALE

Guide \$8.8m

VIEW

By Appointment

AGENTS

Peter Robinson
0401 219 077
peter.robinson@ljhooker.com.au

Angus Abrahams
0488 007 236
angus.abrahams@ljhooker.com.au

AGENCY

LJ Hooker Palm Beach
(02) 9974 5999

All information contained therein is gathered from relevant third parties sources.
We cannot guarantee or give any warranty about the information provided.
Interested parties must rely solely on their own enquiries.

 LJ Hooker

The centerpiece of the outdoor space is a magnesium-heated infinity pool with swim and spa jets, surrounded by striking landscaped gardens featuring ponds, citrus trees, and a newly installed irrigation system. Every element of the property has been designed for relaxation, entertainment, and family enjoyment.

The interiors exude balance and sophistication, offering multiple living areas, a dedicated study, a sandstone wine cellar, and a stunning parent's retreat on the top floor. Positioned less than 200 meters from the beach and ocean pool, this home also offers easy access to local cafés, shops, buses, and boating opportunities on Pittwater.

- Spanning 935 sqm with manicured gardens and uninterrupted views stretching across Whale Beach
- Architectural Excellence: Originally transformed in 2012 with a high-quality build, expanding the home to an impressive 320 sqm (approx)
- 2024 renovations included an Italian-made glass lift, marble laundry, new windows, skylights, and extensive smart home electrification
- Heated infinity pool, alfresco entertaining deck, ponds, citrus trees, and outdoor beach showers with BBQ bayonet
- Unparalleled sustainable Features: 7.2 kW solar system, Tesla Powerwall 2 Battery with 13.5 kWh capacity, Mercedes EV charger, 10 rainwater tanks (7,000L), and electric heat pump systems
- Blackbutt timber floors, a sleek marble kitchen with Wolf appliances, a 2024 Miele Auto Dose dishwasher, and a butler's pantry
- Four well-appointed bedrooms, including a luxurious top-floor parent's retreat, and designer bathrooms with underfloor heating
- DA-approved plans for a panoramic outdoor sauna and expanded balcony to elevate the coastal living experience further

This architectural sanctuary epitomises the essence of liveable luxury and timeless design in one of Sydney's most coveted coastal locations.

MORE DETAILS

Property ID	BRYF6Z
Property Type	House
Land Area	935 m2

Peter Robinson 0401 219 077

Principal â€” Peter Robinson Real Estate Pty Ltd CLN 10121506 | peter.robinson@ljhooker.com.au

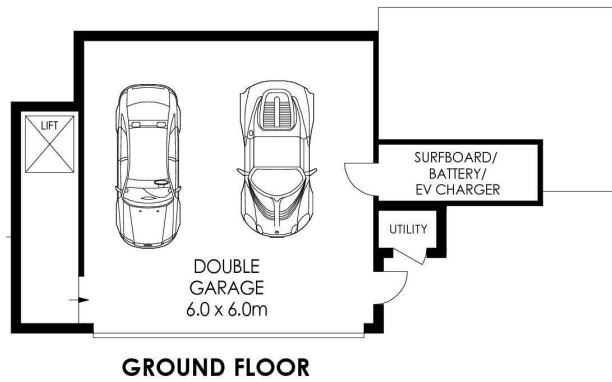
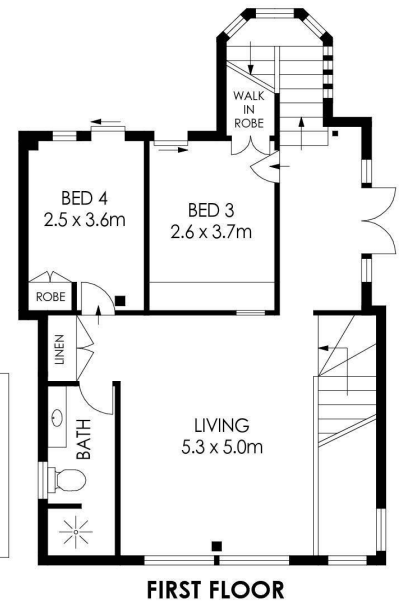
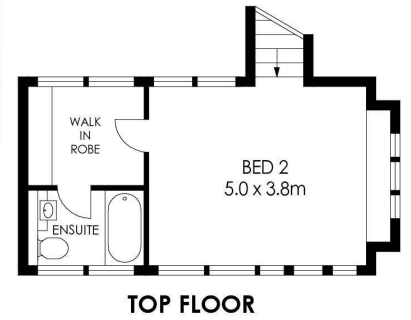
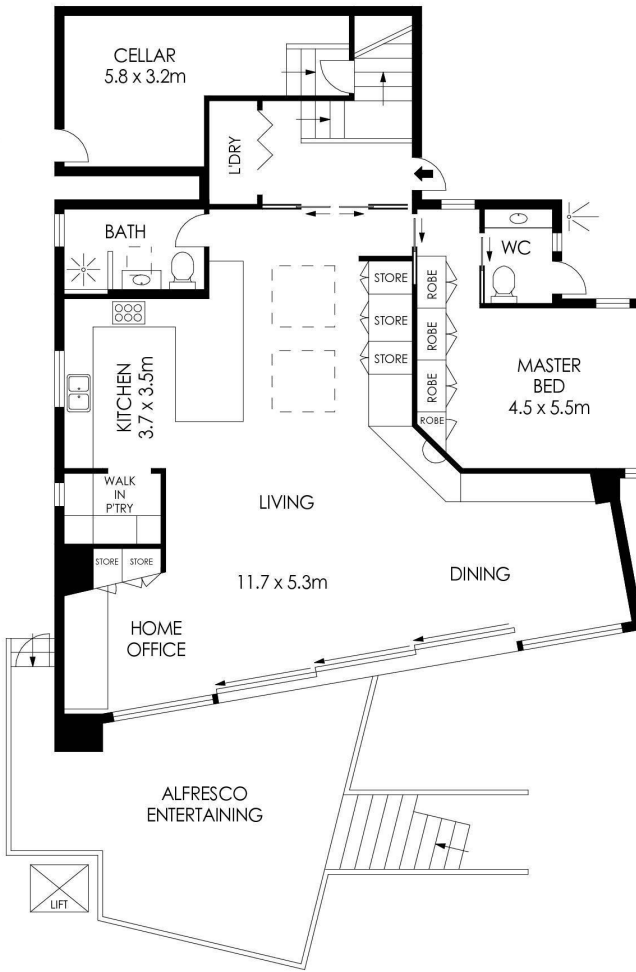
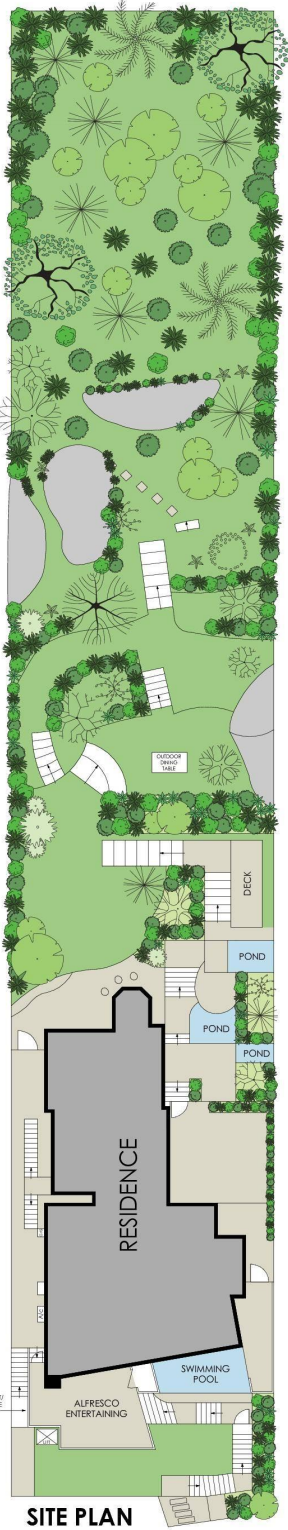
Angus Abrahams 0488 007 236

Licensed Real Estate Agent | angus.abrahams@ljhooker.com.au

LJ Hooker Palm Beach (02) 9974 5999

1073 Barrenjoey Road, PALM BEACH NSW 2108
palmbeach.ljhooker.com.au | office@ljhpb.com.au





APPROX. INTERNAL AREA = 285 m²
 APPROX. EXTERNAL AREA = 30 m²
 TOTAL = 315 m²
 LAND SIZE = 934.7 m²

PLANS SHOWN ONLY INDICATIVE OF LAYOUT. DIMENSIONS ARE APPROXIMATE.



254 Whale Beach Road, Whale Beach

LJ Hooker

All information contained therein is gathered from relevant third parties sources.
 We cannot guarantee or give any warranty about the information provided.
 Interested parties must rely solely on their own enquiries.

LJ Hooker