

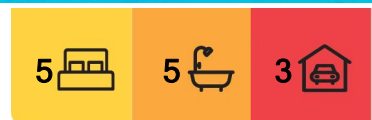
Whale Beach, 246 Whale Beach Road

Stunning Architectural Masterpiece at Whale Beach

Discover a breathtaking architectural marvel, with this newly constructed luxurious haven with phenomenal views matched only by the luminous interiors. This extraordinary residence offers an unparalleled coastal lifestyle with exquisite design and world-class amenities.

Situated a mere 20 metres from the beach access point, and just 99 metres to the actual sand, this property boasts a 50-metre frontage of environmentally protected green space, ensuring privacy and a sense of seclusion. Every room in the house offers gun barrel views of the beach and ocean, giving you a constant connection to the stunning natural surroundings. Enjoy front-row seats to two world-class surf breaks directly out front, perfect for the avid surfer.

With 540 square metres of internal space, this home provides ample room for both relaxation and entertainment. Additionally, the 220 square metres of usable terrace space



For Sale
\$15,950,000

View
ljhooker.com.au/BGKF6Z

Contact
BJ Edwards
0420 304 140
bjedwards@ljhpb.com.au
David Edwards
0415 440 044
david.edwards@ljhooker.com.au



Disclaimer: All information contained therein is gathered from relevant third parties sources. We cannot guarantee or give any warranty about the information provided. Interested parties must rely solely on their own enquiries.

LJ Hooker Palm Beach
(02) 9974 5999

is set within beautifully landscaped grounds, creating a seamless blend of indoor and outdoor living.

Street Level

- Secure parking is effortless with a spacious 3-car garage plus additional storage.

Lower Ground

- A large vaulted wellness room with an ensuite is thoughtfully detached from the main house, providing a serene retreat for relaxation and rejuvenation.

Ground Floor

- The heart of the home is the massive open-plan living room, featuring a lift for easy access to all floors.
- The large kitchen, equipped with top-of-the-range VZug appliances and integrated Liebherr fridge-freezer includes a butler's utility room and a temperature-controlled wine vault, ideal for the culinary enthusiast.

First Floor

- Three substantial bedrooms, each with ensuites and adjoining balconies, offer sweeping gun barrel views of the beach and ocean.
- A large screening-library room, utility space, and beach viewing gallery complete this level, providing versatile spaces for leisure and productivity.

Second Floor

- The master suite is a sanctuary of luxury, featuring a massive bedroom-lounge with breathtaking views and an adjoining balcony.
- The expansive his-and-hers walk-in robe includes a laundry chute and an integrated champagne fridge.
- The master ensuite, with its own balcony, offers indulgent ocean views.
- An office space with beach and ocean views ensures a tranquil work environment.

The stunning residence boasts incredible smart home capabilities with unmatched specifications such as wifi controlled irrigation, pool heating, a/c, Zetr lighting, CCTV, alarm

More About this Property

Property ID	BGKF6Z
Property Type	House
Land Area	670.2 m2
Including	Study Ocean Views Pool Water Views

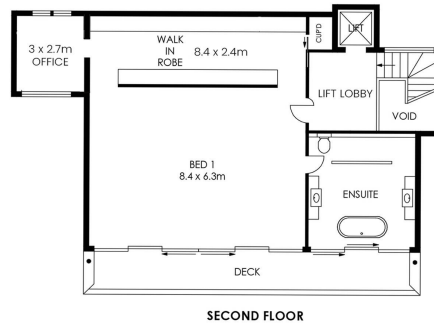
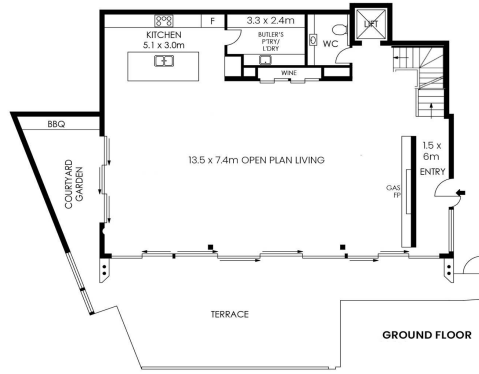
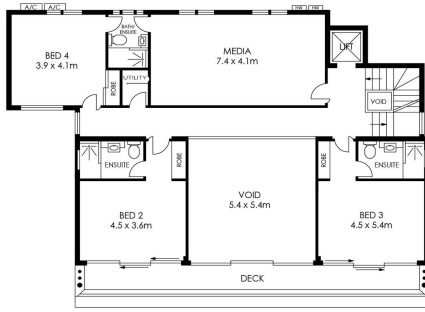
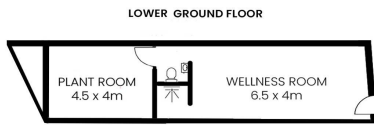
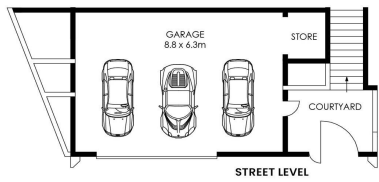
BJ Edwards 0420 304 140
Licensed Real Estate Agent | bjedwards@ljhpb.com.au
David Edwards 0415 440 044
Director | Licensee | David Edwards Palm Beach Realty Pty Ltd CLN 348342â€ | david.edwards@ljhooker.com.au

LJ Hooker Palm Beach (02) 9974 5999
1073 Barrenjoey Road, PALM BEACH NSW 2108
palmbeach.ljhooker.com.au | office@ljhpb.com.au



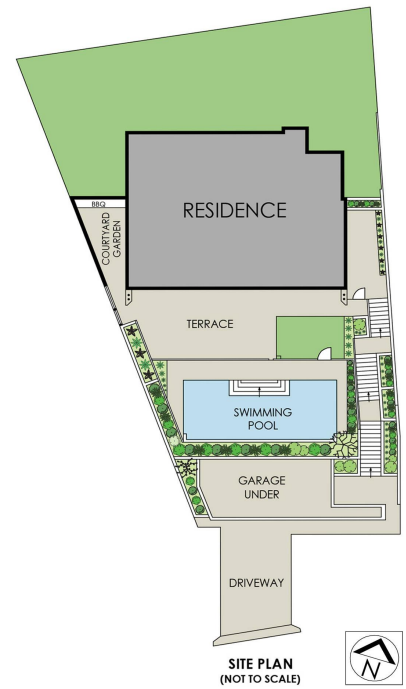
Disclaimer: All information contained therein is gathered from relevant third parties sources.
We cannot guarantee or give any warranty about the information provided. Interested parties must rely solely on their own enquiries.

LJ Hooker Palm Beach
(02) 9974 5999



APPROX. INTERNAL AREA = 535 m²
 APPROX. EXTERNAL AREA = 220 m²
 TOTAL = 755 m²
 LAND SIZE = 670 m²

PLANS SHOWN ONLY INDICATIVE OF LAYOUT. DIMENSIONS ARE APPROXIMATE.



246 Whale Beach Road

LJ Hooker