

243 Whale Beach Road, Whale Beach

On the Sands of Whale Beach

Offered for the first time in almost 100 years this property is a rare and remarkable legacy on one of Sydney's most sought-after stretches of coastline.

Positioned on the absolute beachfront of Whale Beach with direct private access to the golden sands of Whale Beach, this classic coastal residence captures the essence of barefoot living. Wake each morning to the magic of sunrise over the Pacific Ocean, migrating whales grace the horizon and surfers carve through the waves at "The Wedge", Whale Beach's famous surf break.

Set across two sun-drenched levels, the home offers a rare opportunity to secure one of Sydney's most coveted beachfront positions. While ready for modern rejuvenation, its solid foundations, generous proportions and full-length views spanning the entire sweep of Whale Beach from north to south provide an exceptional canvas for transformation.

The upper level features four well-appointed bedrooms with built-in wardrobes, a bathroom, kitchen, and open-plan living and dining area that flows effortlessly to an expansive entertaining balcony. From here, panoramic views sweep across the entire span of Whale Beach and the Pacific Ocean, offering the perfect vantage point for spotting

5 2 2

FOR SALE
\$9,950,000

AGENTS

David Edwards
0415 440 044
dedwards@ljhpb.com.au

BJ Edwards
0420 304 140
bjedwards@ljhpb.com.au

AGENCY

LJ Hooker Palm Beach
(02) 9974 5999

All information contained therein is gathered from relevant third parties sources.
We cannot guarantee or give any warranty about the information provided.
Interested parties must rely solely on their own enquiries.

LJ Hooker

whales, watching the surf, or simply soaking in the serenity of this spectacular setting.

At the front of the home, a private courtyard framed by lush greenery offers a peaceful escape, ideal for intimate gatherings or relaxed alfresco dining. The lower level presents outstanding scope for reinvention, with an existing bedroom, bathroom, laundry, and the framework for a second kitchenette - perfect for guest accommodation or a self-contained retreat.

Whale Beach, often celebrated as one of Sydney's best-kept secrets, promises a lifestyle of privacy and tranquillity away from the crowds, yet just moments from vibrant local cafes, restaurants, and coastal walking trails.

Whether envisioned as a holiday sanctuary or a full-time beachfront residence, this remarkable home delivers a front-row seat to nature's daily spectacle - where the ocean, the sand, and the horizon become part of your everyday life.

MORE DETAILS

Property ID	BQRF6Z
Property Type	House
Land Area	669.5 m2

David Edwards 0415 440 044

Director | Licensee | David Edwards Palm Beach Realty Pty Ltd CLN 348342 | dedwards@ljhpb.com.au

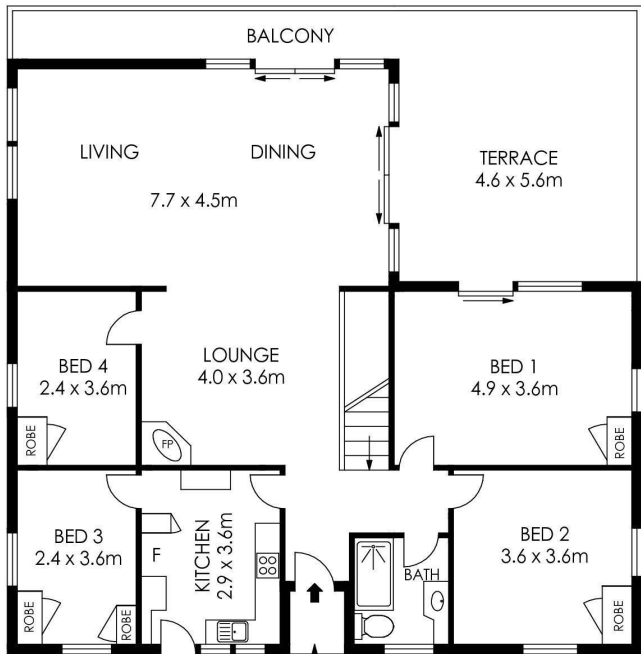
BJ Edwards 0420 304 140

Licensed Real Estate Agent | bjedwards@ljhpb.com.au

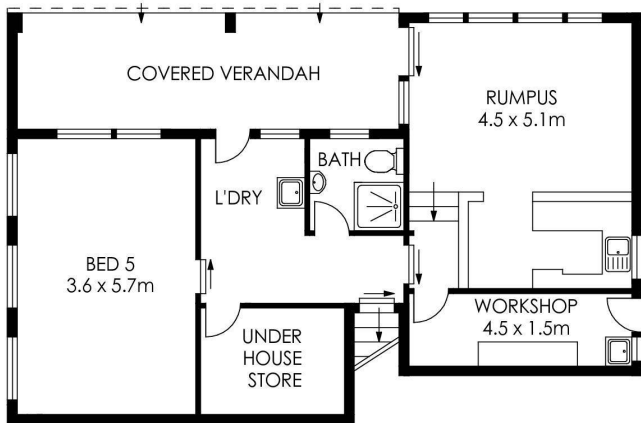
LJ Hooker Palm Beach (02) 9974 5999

1073 Barrenjoey Road, PALM BEACH NSW 2108
palmbeach.ljhooker.com.au | office@ljhpb.com.au

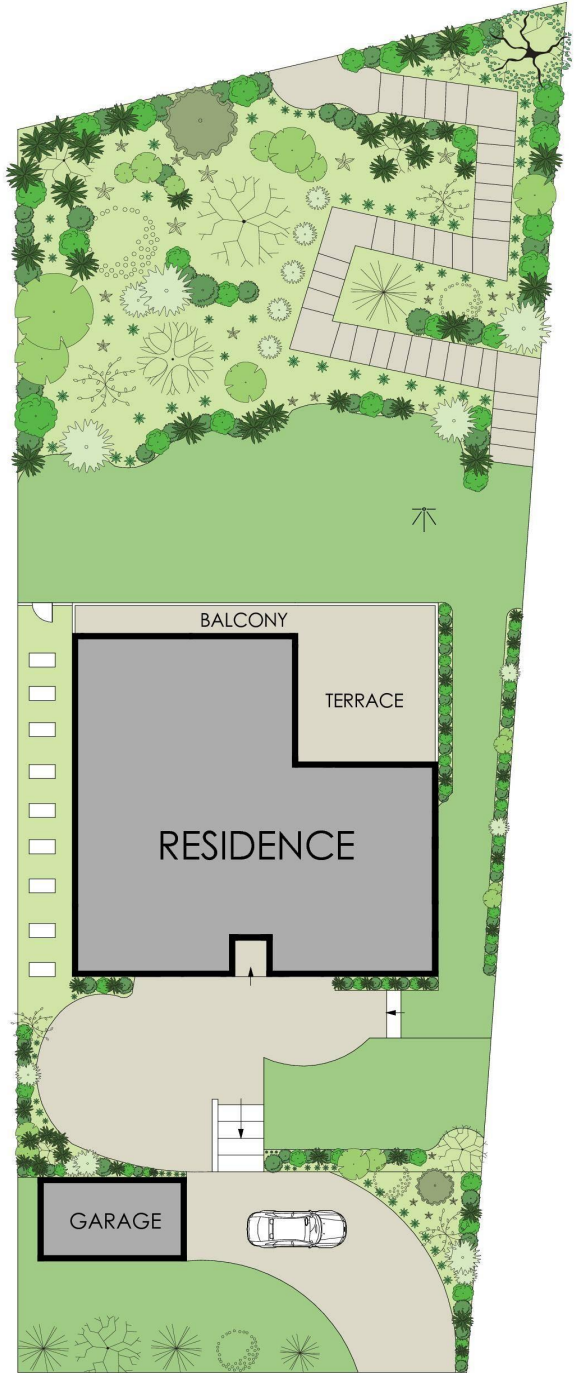
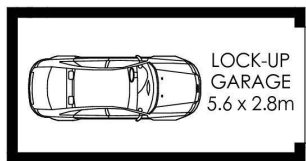




ENTRY LEVEL



LOWER LEVEL



SITE PLAN
(NOT TO SCALE)

APPROX. INTERNAL AREA = 197 m²
 APPROX. EXTERNAL AREA = 47 m²
 TOTAL = 244 m²
 LAND SIZE = 669.5 m²



PLANS SHOWN ONLY INDICATIVE OF LAYOUT. DIMENSIONS ARE APPROXIMATE.

243 Whale Beach Road, Whale Beach



All information contained therein is gathered from relevant third parties sources.
 We cannot guarantee or give any warranty about the information provided.
 Interested parties must rely solely on their own enquiries.

