



24 Beauty Drive, Whale Beach

4 3 4

## Luxurious Executive Residence, North Aspect, Wide Ocean and Beach Views, Pool, Walk to Beach, Level Access

**FOR SALE**  
\$9,600,000

### AGENTS

Peter Robinson  
0401 219 077  
peter.robinson@ljhooker.com.au

Dennis Kennelly  
0477 977 971  
dennis.kennelly@ljhavalon.com.au

### AGENCY

LJ Hooker Palm Beach  
(02) 9974 5999

Situated on 830sqm of land on the sundrenched ridge of this private cul-de-sac location, enjoying intimate and expansive beach and ocean views combined with easy level access, this luxurious executive home is simply brilliant.

Built by the MBA 2016 Excellence Award Winner, this home comes with all the mod cons you need for an extremely comfortable beachside lifestyle.

- Award winning custom infinity pool and spa with Astral Connect 10 touch phone automation. Winner of 'Poolside' magazine, pool of the year 2024
- Outdoor entertaining options including the main garden terrace, the sunken firepit and seating area, or alternatively the upstairs covered alfresco TV and BBQ zone with sink and wood burning fireplace
- Open plan living with oversized sandstone Rinnai gas fireplace, Tasmanian oak ceiling, over-sized floor tiles and vast bi-fold glass

All information contained therein is gathered from relevant third parties sources.  
We cannot guarantee or give any warranty about the information provided.  
Interested parties must rely solely on their own enquiries.

LJ Hooker

- doors to the views
- Slick kitchen with Miele appliances including induction cooktop, pyrolytic oven, microwave, plus integrated Bosch dishwasher, Fisher and Paykel 2 door fridge with freezer drawer, and Zip tap with sparkling water
- Mandatory, functional Butler's Pantry with extra sink and storage
- Second living area, ideal for movie room or kids/teens designated space
- Master bedroom with commanding outlook, private balcony, make-up room, walk-thru robes and ensuite with standalone bath, shower, dual vanities and wc
- Envious home-office set-up with views to make you wonder exactly how much office work you'd really achieve ....
- Second and third double bedrooms - one with dual balconies, the other with walk-in robes - share the main bathroom, with standalone bath, shower and wc
- The 4th double bedroom adjoins the 3rd bathroom with shower, vanity and wc
- Laundry with direct access outside, and convenient guest wc
- Daikin VRV room-zoned air conditioning and under floor heating in each room of the house for daily convenience and year round comfort
- Integrated sound, wine cellar, 14kw solar system, 2 x Rinnai continuous hot water systems, 55kltr water tank under the driveway
- Auto door double garage with internal access and level entry - and plenty of off-street parking. But you can leave your cars at home and head to the beach!

When it comes to a holiday home or full-time residence, you'd be hard-pressed to match the size and quality of this home and location.

## MORE DETAILS

Property ID	BRKF6Z
Property Type	House
Land Area	834.7 m2
Including	Ensuite Air Conditioning Fire Place Built-in-Robes 3 Phase Power Area Views Ocean Views Pool Spa

### Peter Robinson 0401 219 077

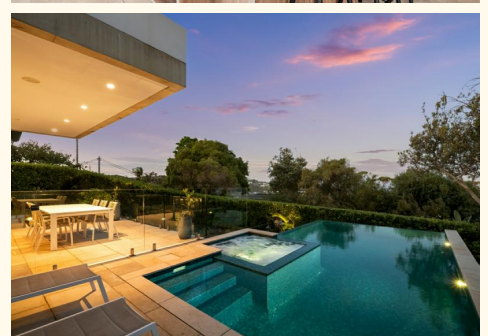
Principal " Peter Robinson Real Estate Pty Ltd CLN 10121506 | peter.robinson@ljhooker.com.au

### Dennis Kennelly 0477 977 971

Licensed Real Estate Agent | Residential and Commercial | dennis.kennelly@ljhavalon.com.au

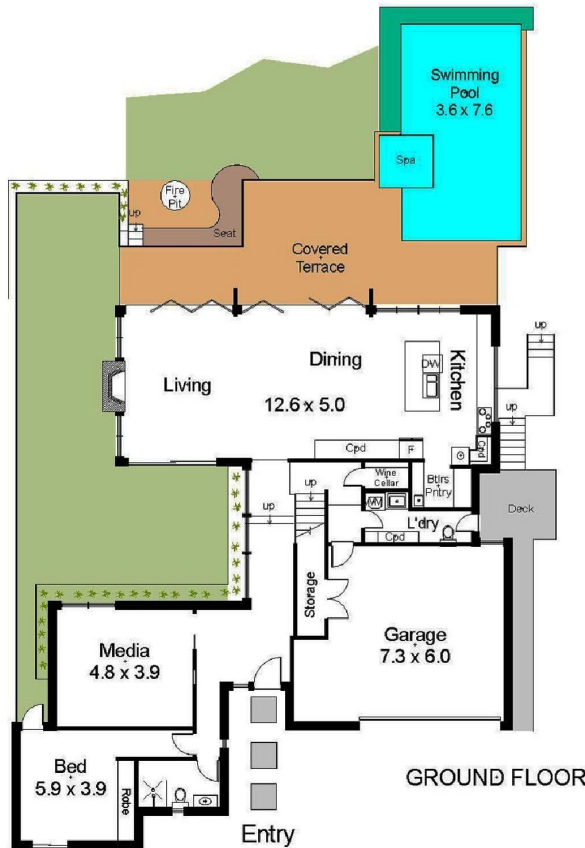
### LJ Hooker Palm Beach (02) 9974 5999

1073 Barrenjoey Road, PALM BEACH NSW 2108  
palmbeach.ljhooker.com.au | office@ljhpb.com.au

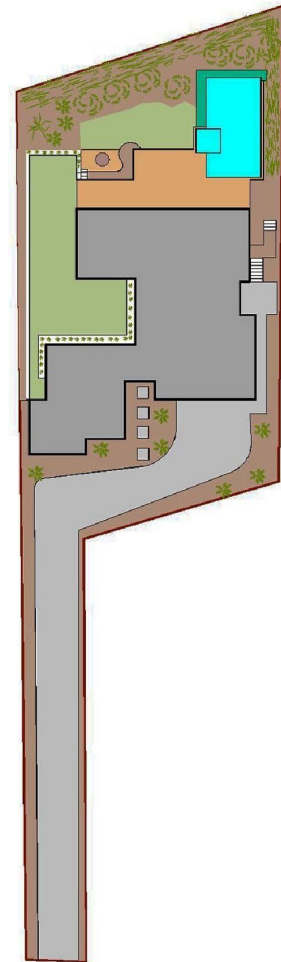




FIRST FLOOR



GROUND FLOOR



SITE PLAN

## 24 Beauty Drive, Whale Beach

INTERNAL FLOOR AREA (approx) 367m<sup>2</sup> : 39.5 sq

Disclaimer : K & S Smith-White ABN 84 553 107 368 Trading as NORTHSIDE FLOORPLANS Pymble - Hornsby Tel. 9144 2474; Mob. 0427 442 474  
This floor plan serves only as a guide for promotional purposes and should not be scaled or relied upon for any specific detail. No liability will be accepted.  
Prospective purchasers should make and rely upon their own inquiries to determine the accuracy of all measurements and features.