


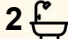
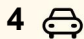
19 Rayner Road, Whale Beach

'Tiare House' - North-Facing Paradise with Endless Ocean Views

Welcome to your North Facing Oasis, where every day feels like a vacation. This magnificent property boasts unparalleled ocean views that stretch as far as the eye can see. Gaze upon the pristine beauty of Whale Beach, Palm Beach, and the iconic Barrenjoey Lighthouse, all from the comfort of your own home.

Imagine waking up to the sight of migrating whales frolicking in the crystal-clear waters below, as you sip your morning coffee. Life here unfolds on a single level, making it easy and relaxed. Three bright bedrooms anchor the main house, while a self-contained cabin nestled into the garden offers privacy for guests or space for creative pursuits.

Inside, hardwood floors ground the airy open-plan design, while the hand-built kitchen-crafted with an artisan's touch-frames ocean views through its wide servery window, connecting directly to the intimate bar on the deck. It's a space that blurs the line between cooking, gathering and celebrating.

4  2  4 

FOR SALE

For Sale

VIEW

Sat 9th May @ 10:30AM - 11:00AM

AGENTS

Peter Robinson

0401 219 077

peter.robinson@ljhooker.com.au

AGENCY

LJ Hooker Palm Beach

(02) 9974 5999

All information contained therein is gathered from relevant third parties sources.
We cannot guarantee or give any warranty about the information provided.
Interested parties must rely solely on their own enquiries.

 **LJ Hooker**

From sunrise to sunset, you'll enjoy all-day sun, making this home an absolute delight for sun worshippers. What sets this property apart is its unique and captivating dual aspect. A large, ocean-facing deck provides the perfect stage for whale watching or long lunches in the sun, while the flat rear yard and second entertaining terrace create a more sheltered backdrop for family barbecues or quiet evenings under the stars. The level rear garden provides a vantage point that offers both ocean and district views across Avalon and beyond, making it a one-of-a-kind haven.

Key Features:

- North-facing, sunlit home with dual aspect and multiple zones
- Enormous ocean-facing deck, where the free-flowing design allows for seamless indoor-outdoor living.
- Custom hand built kitchen and joinery
- Warm hard wood floors
- Beautiful established gardens envelop the property, creating a serene atmosphere that's perfect for outdoor entertaining.
- Self-contained cabin nestled into the garden opens out to lush grounds
- Copper roofing crowns the home with understated distinction
- Lush level lawn + established gardens wrap around the property, lending both privacy and softness to the setting.
- Reverse-cycle air-conditioning ensures year-round ease
- Generous garage and additional off-street parking for three extra cars.
- The quiet cul-de-sac location completes the sense of retreat, while keeping the beach and village close at hand.

This is a home that doesn't just offer a place to live-it offers a way of living. Bright, breezy, and deeply connected to the ocean, it's a reminder that the best houses don't just frame the view; they become part of it.

MORE DETAILS

Property ID	7YGF6Z
Property Type	House
Land Area	658 m2
Including	Ocean Views

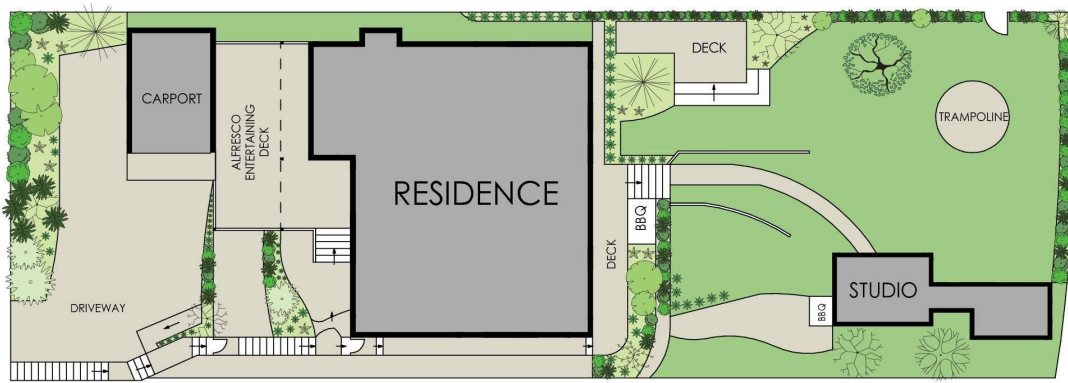
Peter Robinson 0401 219 077

Principal & Peter Robinson Real Estate Pty Ltd CLN 10121506 | peter.robinson@ljhooker.com.au

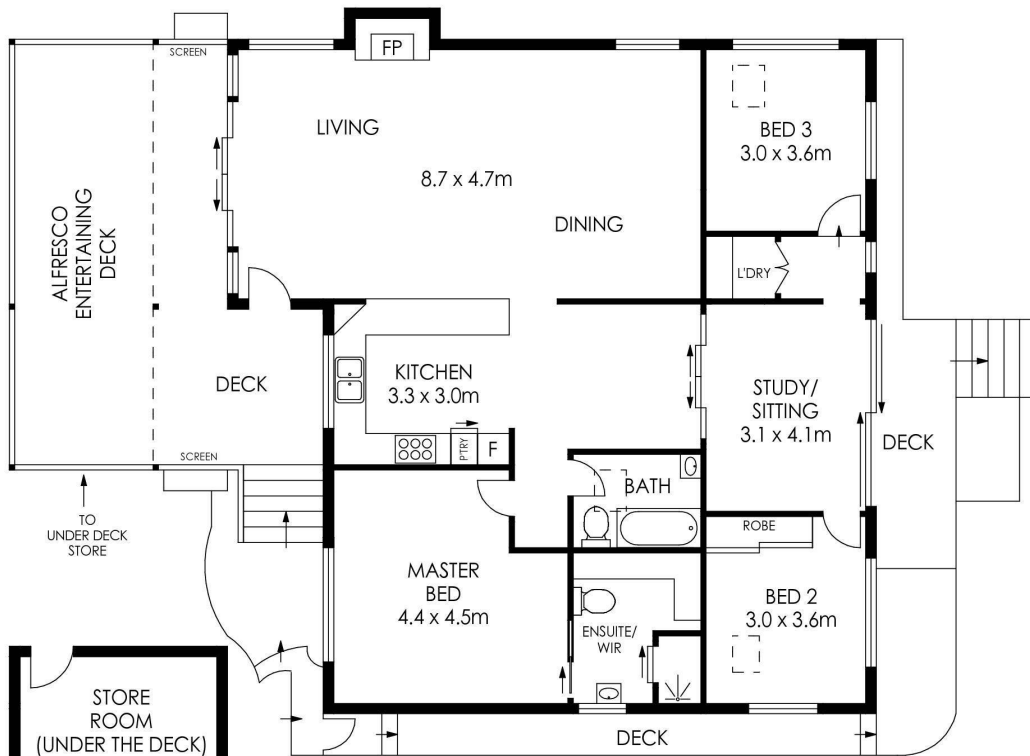
LJ Hooker Palm Beach (02) 9974 5999

1073 Barrenjoey Road, PALM BEACH NSW 2108
palmbeach.ljhooker.com.au | office@ljhpb.com.au





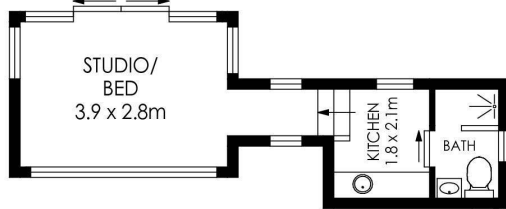
SITE PLAN (NOT TO SCALE)



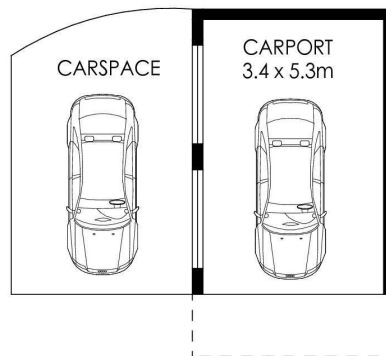
GROUND LEVEL



LOWER LEVEL



STUDIO



APPROX. INTERNAL AREA = 135 m²
 APPROX. EXTERNAL AREA = 48 m²
 TOTAL = 183 m²
 STUDIO = 19 m²
 LAND SIZE = 658 m²



19 Rayner Road, Whale Beach



All information contained therein is gathered from relevant third parties sources.
 We cannot guarantee or give any warranty about the information provided.
 Interested parties must rely solely on their own enquiries.

