



143-145 Whale Beach Road, Whale Beach

Architecturally Designed Masterpiece with Breathtaking Ocean Views and Private Golf Course

Blurring the line between luxury home, holiday villa and private playground, this sprawling Whale Beach residence redefines elevated coastal living. Commanding two prime plots atop the dramatic cliff face just south of Whale Beach, the home is instantly captivating —its striking sandstone facade crafted from over 1,000 tonnes of hand-selected stone. Nestled among towering pines and swaying gums, the exclusive residence offers sweeping vistas across Whale Beach and out to the Central Coast, while maintaining a sense of privacy. The balance of stunning views and intimate ambience sets the tone for what's to come —a home that is elevated yet relaxed, grand yet timeless, bespoke yet approachable.

Designed by renowned Sydney architect Michael Suttor, the residence spans three levels and draws subtle inspiration from Italianate architecture, reimagined through a contemporary, romantic lens. Five bedrooms and five bathrooms are thoughtfully arranged to maximise comfort and privacy. Living spaces are anchored by a soaring timber

5 5 4

FOR SALE
Contact Agent

VIEW
By Appointment

AGENTS
David Edwards
0415 440 044
dedwards@ljhpb.com.au

BJ Edwards
0420 304 140
bjedwards@ljhpb.com.au

AGENCY
LJ Hooker Palm Beach
(02) 9974 5999

All information contained therein is gathered from relevant third parties sources.
We cannot guarantee or give any warranty about the information provided.
Interested parties must rely solely on their own enquiries.

LJ Hooker

cathedral ceiling, with concealed blinds to the terrace and sitting areas creating moments for reprieve.

Interior design by Deanne Rooz continues the architectural narrative with meticulous attention to detail. Rich materials dominate throughout—stone, solid oak, marble, brass, and European Oak antique basket weave flooring. Meanwhile, smart home integration ensures seamless control of lighting, climate, and security, blending cutting-edge technology with timeless elegance.

Outdoors, the residence is equally compelling. A private golf course opens to ocean views, while a heated infinity plunge pool, spa, and sauna invite wellness and relaxation. Landscaping by Richard Unsworth and Paul Bangay creates immersive garden zones, from manicured hedges dotted with native flora to a mahogany pergola offering shaded repose. Every marble pot is hand-machined from solid European stone, underscoring a commitment to craftsmanship.

- Architecturally designed three-level home with lift access and ocean vistas
- Luxurious finishes, including Calcutta Ora Marble and handmade Argentinian door hardware (Fersa)
- Fireplace with marble finishes
- Underfloor heating throughout all hard surfaces, including timber and tile
- Luxe kitchen with Sub-Zero fridge/freezer, Wolf oven, gas stove, and separate drinks fridge
- Five opulent en-suites and three powder rooms with bespoke brass fixtures and handmade vanities, a custom, handmade bath in the main suite
- Separate guest accommodation with a kitchenette and an ensuite
- Multiple terraces and outdoor entertaining areas with uninterrupted coastal views
- Private golf course, heated infinity plunge pool, gym, sauna, egg spa with glass mosaic and brass detailing
- Beautifully landscaped gardens with 50+ smart-zoned areas, 200 LED copper garden lights, A4 Bent Grass greens, and Tiff Tuff surrounds
- Advanced security: 30+ CCTV cameras with facial recognition
- Smart home system (Cestron) with remote access and control
- Climate control: seven-zone air conditioning, Vintec air filtration, and Xypex concrete slabs for airflow
- Integrated Sonos and Unifi WiFi system across all internal and external zones

- Irrigation system with smart panel, dual-stage filtration, and three water tanks (10,000L total)
- Dedicated service areas: cellar, spa and pool plant rooms, comms room, greenkeeper's storage with two cylinder mowers, spreader, tools and vert cutter
- Double lock-up garage with turntable

From the private fairways to the shimmering line where ocean meets sky, every moment here is shaped by beauty, serenity, and intention. For those seeking an extraordinary retreat to call their own, this residence stands unrivalled - a legacy of design, lifestyle, and timeless allure.

MORE DETAILS

Property ID	BRNF6Z
Property Type	House
Land Area	2150 m2

David Edwards 0415 440 044

Director | Licensee | David Edwards Palm Beach Realty Pty Ltd CLN 348342 | dedwards@ljhpb.com.au

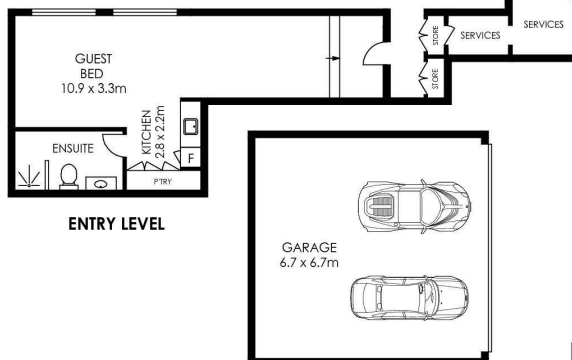
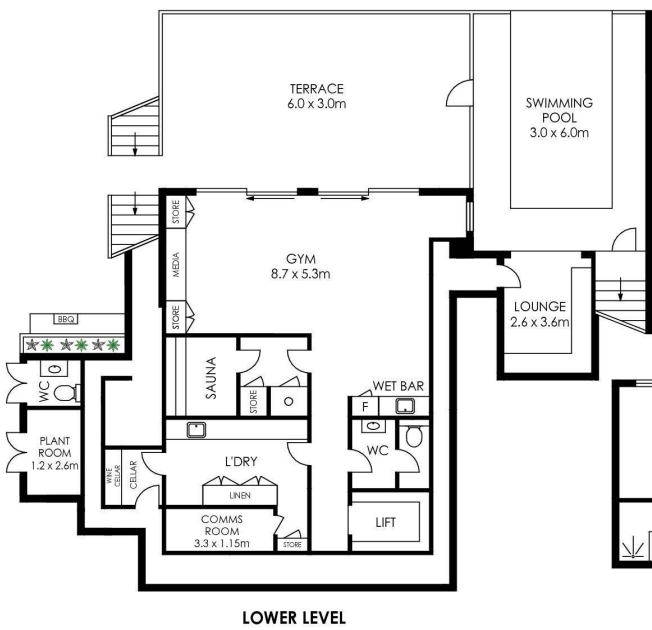
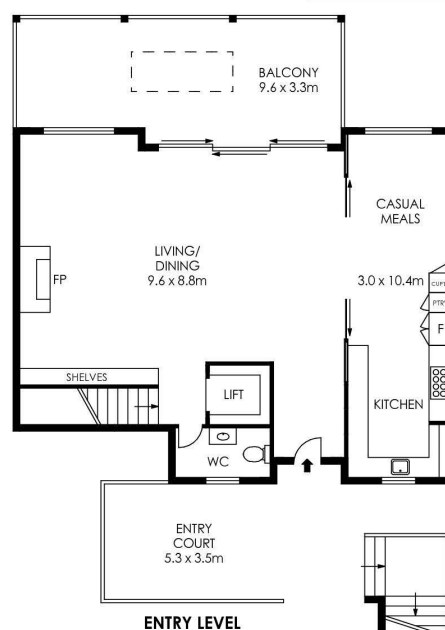
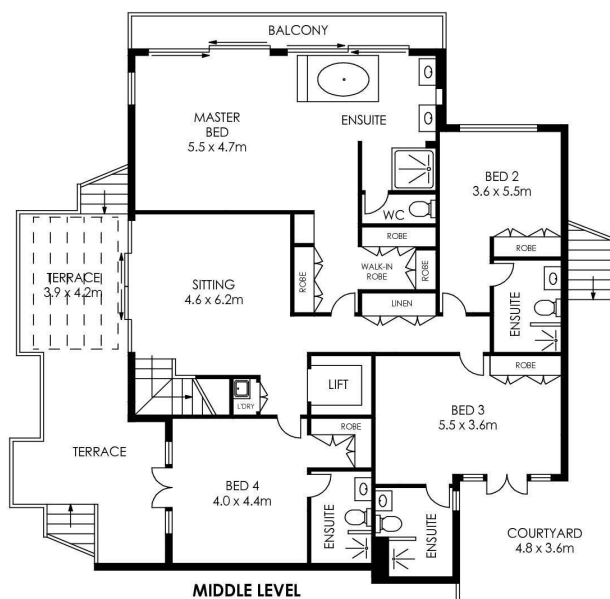
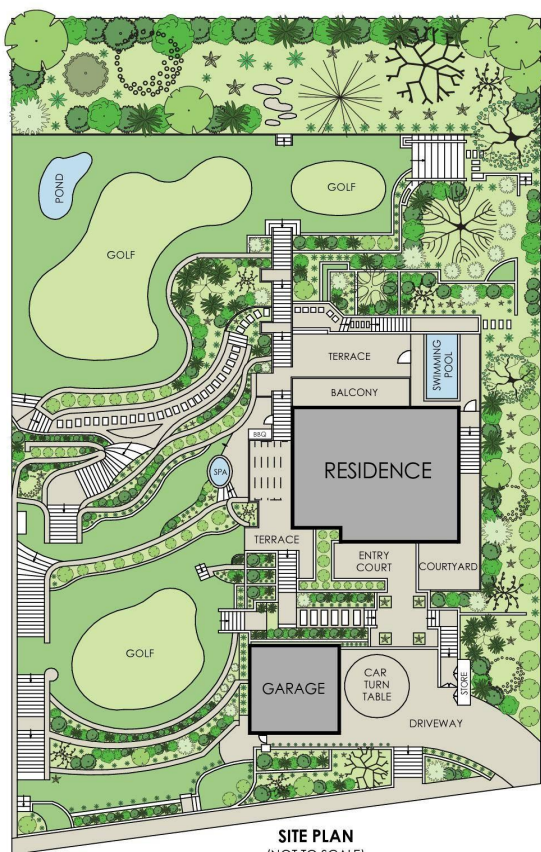
BJ Edwards 0420 304 140

Licensed Real Estate Agent | bjedwards@ljhpb.com.au

LJ Hooker Palm Beach (02) 9974 5999

1073 Barrenjoey Road, PALM BEACH NSW 2108
palmbeach.ljhooker.com.au | office@ljhpb.com.au





APPROX. INTERNAL AREA = 478 m²
 APPROX. EXTERNAL AREA = 169 m²
 TOTAL = 647 m²
 LAND SIZE = 2150 m²

PLANS SHOWN ONLY INDICATIVE OF LAYOUT. DIMENSIONS ARE APPROXIMATE.

143/145 Whale Beach Road, Whale Beach

LJ Hooker

All information contained therein is gathered from relevant third parties sources.
 We cannot guarantee or give any warranty about the information provided.
 Interested parties must rely solely on their own enquiries.

LJ Hooker