

43 Leist Street, Weston

MULTIGENERATIONAL LIVING WITH VIEWS

Positioned perfectly to embrace the sweeping views of Mt Stromlo, this renovated character home with modern additions is surprisingly spacious and versatile. Offering 185m² of internal and external space over two levels, the intelligent floor plan provides ample options for a household of any size and stage, with several entertaining areas and a fantastic dual living residence.

Stepping inside, the upper level offers a large formal living area replete with bright features; large corner window flooding the space with light. This space flows through to a formal dining area and large gourmet kitchen, a harmonious combination of modern and classic features - with stone benchtops, feature lighting, ample bench and storage space, gas cooking and dishwasher. Ensuring easy entertaining, a large covered patio flows from this space, offering expansive views across Mt Stromlo & the Molonglo Valley enjoyment during any family occasion or meal.

Three bedrooms are located on this level, all with built-in robes, the master especially spacious with its own private deck. A master bathroom with bath, shower and separate WC caters to family and guests.

4 2 2

FOR SALE
Auction

AGENTS

Jane Macken
0408 662 119
jane.macken@ljhwodenweston.com.au

Emma Irwin
04224 15008
emma.irwin@ljhwodenweston.com.au

AGENCY

LJ Hooker Woden | Weston
(02) 6288 8888

All information contained therein is gathered from relevant third parties sources.
We cannot guarantee or give any warranty about the information provided.
Interested parties must rely solely on their own enquiries.

LJ Hooker

The lower level offers external access to the additional living quarters, the ideal living for extended family, au pair residence or the teenager's retreat. Generous in proportions, there is an open plan living area, a second kitchen, large bedroom with built in robes, ensuite and laundry.

Outdoors is truly your own private oasis - established florals and fruit trees giving the perfect border to the entertainers haven - with paved and grassed areas.

Dedicated to modern practicality, there is a long list of additional features: double garage, ducted gas heating and R/C unit to the living area, kitchen and bedroom plus additional external laundry/storage room. This superb location is an easy walk to local schools, Cooleman Court and the nature offerings of Weston Creek and surrounds.

Features:

- Prestigious Weston Creek family home on 780m2 block with expansive views
- Master residence with 3 bedrooms plus dual residence downstairs with external access
- Designer kitchen with stone benchtops, ample cabinetry and storage space, gas cooktop and dishwasher
- Master bathroom, with floor to ceiling tiles and high quality fixtures
- Ducted gas heating plus 3x R/C heating and cooling units
- Fully enclosed backyard
- Undercover entertaining area
- Double garage
- Abundance of easy care, established fruit trees in the backyard

Land size: 780m2

Living size: 185m2 Living + 36m2 Garage (approx..)

Land value: \$710,000 (2024)

Rates: \$3,924 p.a (approx..)

Land tax: \$7,725 p.a (approx..)

Construction: 1971

EER: 1.5 Stars

MORE DETAILS

Property ID	JA8H5W
Property Type	House
House Size	221 m2
Land Area	780 m2
EER	1.5

Jane Macken 0408 662 119

Franchise Owner, Licensee, Licensed Agent ACT/NSW |
jane.macken@ljhwodenweston.com.au

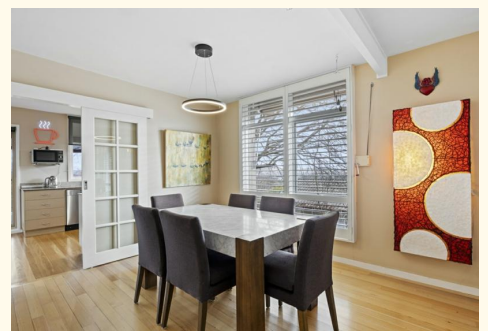
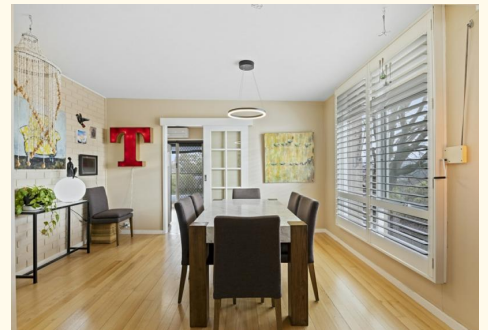
Emma Irwin 0422415008

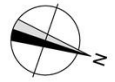
Sales Consultant to Jane Macken |
emma.irwin@ljhwodenweston.com.au

LJ Hooker Woden | Weston (02) 6288 8888

23 Brierly Street, WESTON CREEK ACT 2611

westoncreek.ljhooker.com.au | reception@ljhwodenweston.com.au





Sub-Ground Floor

Ground Floor

The floor plan is not to scale; measurements are indicative and in metres. Exterior elements are not in position. Plans should not be relied on. Interested parties should make and rely on their own enquiries.

43 Leist Street, Weston