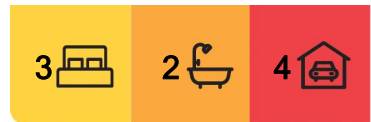




## Weston, 153 Homestead Road

### GRAND FAMILY HOME ON 2.25HA



From the moment you enter the gates of Bradgate House (est. 1989), you feel like you've walked into a real-life story book. The Schist stone wall, Victorian lamps along the tree-lined drive & expansive lawn all set the scene for your very own fairy tale. You're immediately drawn to the Victorian Tudor style, the seclusion & privacy of 2.25 hectares of established grounds, & you'll feel like you're far, far away from anywhere.

Open the arched double doors into the entrance hall & the elegant staircase draws your eye up to the high ceilings & the second floor. Turn left into the formal dining room. or turn right into the parlour, both with ornate fireplaces & chandeliers.

The kitchen features wooden beams on the ceiling, woodburner, dining space & French doors outside. Across from the parlour is a lounge with an impressive schist fireplace, & the scene is immediately set for cosy winter evenings by a roaring fire.

#### For Sale

Buyer Enquiry Over \$1,045,000

#### View

By Appointment

#### Contact

**Stephen Robertson**

0274 731 112

stephenr@ljoamaru.co.nz

**Wayne Fraser**

027 406 8254

waynef@ljoamaru.co.nz



**LJ Hooker Oamaru**

**(03) 434 9014**

Robertson Real Estate Limited

**Disclaimer:** All information contained therein is gathered from relevant third parties sources.

We cannot guarantee or give any warranty about the information provided. Interested parties must rely solely on their own enquiries.

One of the three double bedrooms, two bathrooms & two separate toilets is found in the west wing of the ground floor, & the other two bedrooms, bathroom, separate toilet & attic storage space occupy the second floor.

Full of charm, Bradgate House also meets the practical needs of families, with extra-large internal access double garage, separate laundry, & barn style 3-4 car garage to ensure the enthusiastic collector is satisfied. The roof tiles were sourced from Nazareth House built in 1907. The expansive garden is a childhood adventure tale & zoned Rural Residential with the potential to subdivide off a 1-hectare section (subject to council approval) or land bank for the future, the choice is yours.

If you've ever dreamed of being the Lord or Lady of your very own Manor, visit Bradgate House today & turn your dreams to reality.

Buyer Enquiry Over \$1,045,000

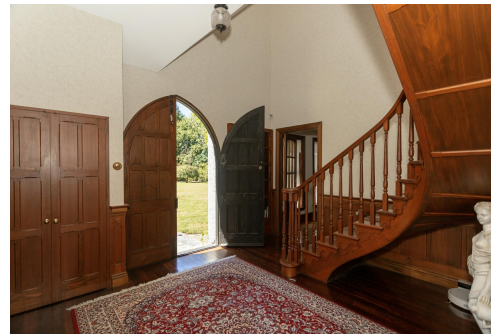
Contact Stephen Robertson on 0274 731 112 or Wayne Fraser on 027 406 8254

## More About this Property

<b>Property ID</b>	TZXGF3
<b>Property Type</b>	Lifestyle
<b>House Size</b>	292 m <sup>2</sup>
<b>Land Area</b>	2.2575 hectare
<b>Licensed Real Estate Agents (REAA2008)</b>	

**Stephen Robertson 0274 731 112**  
Principal / Property Consultant | [stephenr@ljoamaru.co.nz](mailto:stephenr@ljoamaru.co.nz)  
**Wayne Fraser 027 406 8254**  
Property Consultant | [waynef@ljoamaru.co.nz](mailto:waynef@ljoamaru.co.nz)

**LJ Hooker Oamaru (03) 434 9014**  
Robertson Real Estate Limited  
193 Thames Street, OAMARU 9400  
[oamaru.ljhooker.co.nz](http://oamaru.ljhooker.co.nz) | [info@ljoamaru.co.nz](mailto:info@ljoamaru.co.nz)



**Disclaimer:** All information contained therein is gathered from relevant third parties sources. We cannot guarantee or give any warranty about the information provided. Interested parties must rely solely on their own enquiries.

**LJ Hooker Oamaru**  
**(03) 434 9014**  
Robertson Real Estate Limited