



Westminster, 3/6 Shipley Place

Amazing First Home or Investment

Welcome to 3/6 Shipley Place. Fantastic size ground floor villa totally 157sqm in a small development of 8.

This property offers a bit of everything, fantastic outside front courtyard with shed, single garage parking and plenty on street. Plenty of space for a great lounge set up and dining, great size bedrooms and back access to a beautiful oasis with pool.

Located minutes from Stirling shopping thoroughfare and easy access to Wanneroo Road and Reid Highway, this property is an absolute no brainer if you are looking to get onto the first rung of the property ladder as a home owner or investor and add value.

What we love:

* Ground Floor Villa



Disclaimer: All information contained therein is gathered from relevant third parties sources. We cannot guarantee or give any warranty about the information provided. Interested parties must rely solely on their own enquiries.



For Sale
Offers over 460,000

View
ljhooker.com.au/3T01FGJ

Contact
Katie Lawley
0448 682 624
katie.lawley@ljhooker.com.au

LJ Hooker City Residential
(08) 9325 0700

- * Single Garage with internal access and shed
- * Two great size bedrooms
- * Large bathroom/laundry
- * Built in desk set up in bedroom 2
- * Beautiful communal gardens and pool
- * Large storage room
- * Small Development of 8

Rates:

Council - \$1,569.65 pa

Water - \$1,305.10 pa

Strata - Admin \$967.19 pq; Reserve \$104.31 pq

More About this Property

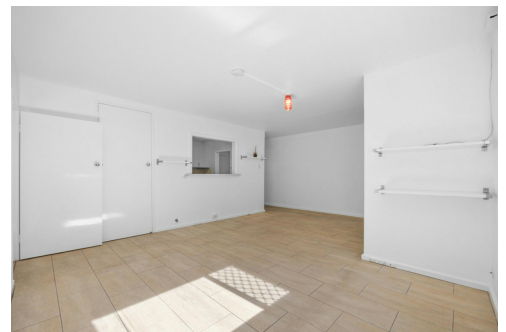
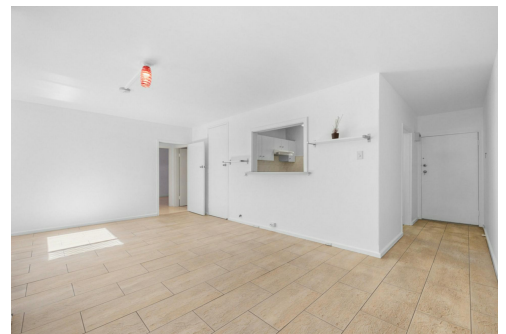
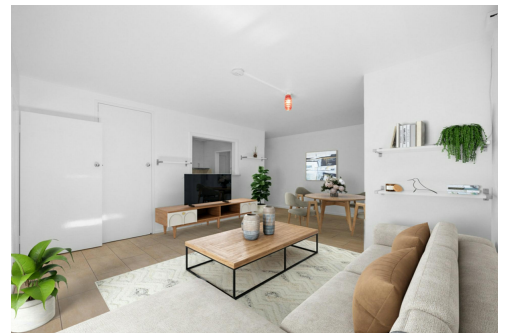
Property ID	3T01FGJ
Property Type	Villa
Including	Pool Courtyard Built-in-Robes

Katie Lawley 0448 682 624

Sales Executive | katie.lawley@ljhooker.com.au

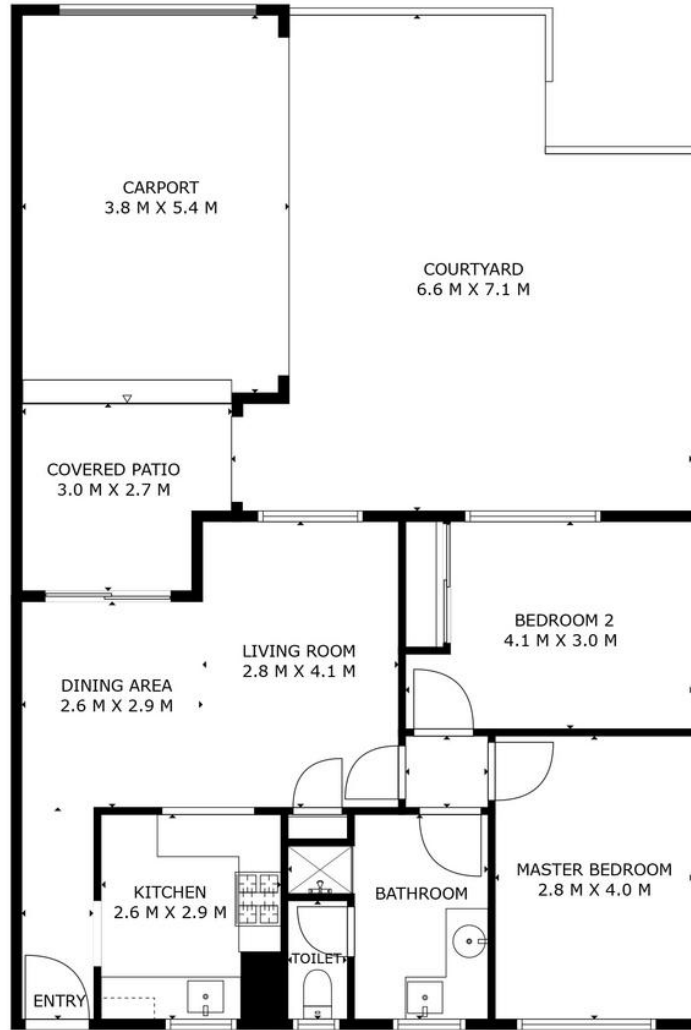
LJ Hooker City Residential (08) 9325 0700

Shop 30, 82 Royal Street, EAST PERTH WA 6004
cityresperth.ljhooker.com.au | hello@ljhpxp.com.au



LJ Hooker City Residential
(08) 9325 0700

Disclaimer: All information contained therein is gathered from relevant third parties sources. We cannot guarantee or give any warranty about the information provided. Interested parties must rely solely on their own enquiries.



Approximate Areas

Internal Area	65m ²
Courtyard	38m ²
Covered Patio	7m ²
Carport	21m ²
Total Lot Size	157m ²



3/6 Shiplely Pl Westminster

This floor plan is for illustrative purposes only. While every effort has been made to provide an accurate representation, all measurements & other information are approximation only.

www.cityresperth.ljhooker.com.au
www.perthrealestaemedia.com



LJ Hooker City Residential
(08) 9325 0700

Disclaimer: All information contained therein is gathered from relevant third parties sources. We cannot guarantee or give any warranty about the information provided. Interested parties must rely solely on their own enquiries.