




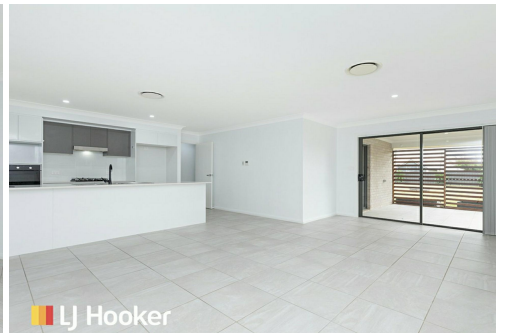
 LJ Hooker



 LJ Hooker



 LJ Hooker



 LJ Hooker

## Westdale, 28 Gilbert Drive

Another one sold off market!

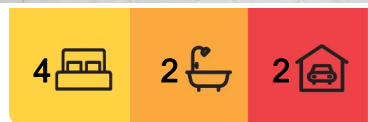
Welcome to 28 Gilbert Drive, Westdale, a beautifully presented four bedroom, two bathroom home offering the perfect blend of space, style, and functionality. Ideal for families or investors, this property provides a practical and modern lifestyle in a peaceful location.

Inside, you'll find a spacious open-plan layout with generous living areas and a stylish kitchen featuring ample cabinet space and quality finishes. The master bedroom includes its own ensuite, while the remaining bedrooms are well-sized, offering comfort and flexibility for the whole family. Evaporative cooling throughout the home ensures comfort all year round.

The outdoor area is equally impressive, with a large, fully fenced backyard, perfect for pets or children to play safely. It's ideal for entertaining, family barbecues, or simply enjoying the space and fresh air. A double garage provides secure parking and additional storage,

 LJ Hooker

**Disclaimer:** All information contained therein is gathered from relevant third parties sources. We cannot guarantee or give any warranty about the information provided. Interested parties must rely solely on their own enquiries.



**For Sale**  
By Negotiation

**View**  
[ljhooker.com.au/AFDHTE](http://ljhooker.com.au/AFDHTE)

**Contact**  
**Samuel Spokes**  
0475 843 042  
[sam.spokes@ljhooker.com.au](mailto:sam.spokes@ljhooker.com.au)  
**Grace Hugo**  
[grace.hugo@ljhooker.com.au](mailto:grace.hugo@ljhooker.com.au)

**LJ Hooker Tamworth**  
**(02) 6767 1710**

adding to the home's overall convenience.

Located in a quiet, family-friendly neighbourhood, this home combines indoor comfort with easy outdoor living, all within a short drive to local schools, shops, and Tamworth's amenities. Don't miss your opportunity to secure a quality home in one of Westdale's most desirable pockets. Contact us today to arrange your inspection.

## More About this Property

<b>Property ID</b>	AFDHTE
<b>Property Type</b>	House
<b>Land Area</b>	723 m2
<b>Including</b>	Air Conditioning Ducted Cooling Ducted Heating Dishwasher Floorboards Built-in-Robes Secure Parking Fully Fenced Remote Garage

### Samuel Spokes 0475 843 042

Licensee, Director - Sales Representative | [sam.spokes@ljhooker.com.au](mailto:sam.spokes@ljhooker.com.au)

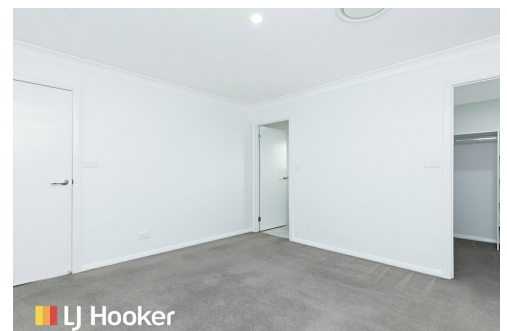
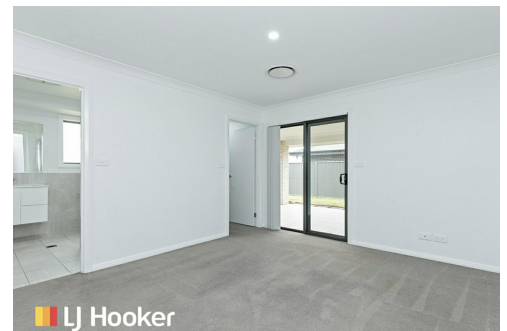
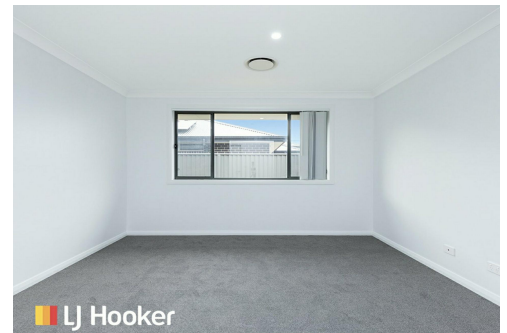
### Grace Hugo

Sales Associate | [grace.hugo@ljhooker.com.au](mailto:grace.hugo@ljhooker.com.au)

### LJ Hooker Tamworth (02) 6767 1710

199 Peel Street, TAMWORTH NSW 2340

[tamworth.ljhooker.com.au](http://tamworth.ljhooker.com.au) | [tamworth@ljhooker.com.au](mailto:tamworth@ljhooker.com.au)



**Disclaimer:** All information contained therein is gathered from relevant third parties sources.

We cannot guarantee or give any warranty about the information provided. Interested parties must rely solely on their own enquiries.

**LJ Hooker Tamworth  
(02) 6767 1710**