

West Melbourne, 3313/5 Wominjeka Walk

Embrace a vibrant lifestyle at 3313/5 WOMINJEKA WALK, WEST MELBOURNE.

Situated just one block from the city's free tram zone and within walking distance to train stations, parks, shops, and restaurants, West Melbourne offers unparalleled convenience right at your doorstep. A stone's throw from the prestigious legal precinct along La Trobe Street and the world-class medical precinct along Flemington Road, this enclave provides a tranquil retreat from the city's hustle and bustle while ensuring easy access to the best of Melbourne.

Nestled within the renowned 'The Mail House' building, this modern apartment in the heart of West Melbourne is a testament to Mim Design's holistic interior approach. The design seamlessly responds to the building's sculpted form and



Disclaimer: All information contained therein is gathered from relevant third parties sources. We cannot guarantee or give any warranty about the information provided. Interested parties must rely solely on their own enquiries.

SOLD

2 

2 

1 

For Sale

\$650,000 - \$720,000

View

ljhooker.com.au/MP8HC2

Contact

Yannie Hou

0416 868 512

yhou.rowville@ljhooker.com.au

LJ Hooker City Residential
(03) 9600 2166

sawtooth character, incorporating raw, natural materials that pay homage to West Melbourne's industrial history. The result is a visually and tactually textured living space with a calm symmetry and solid privacy, complemented by stunning views of the CBD, Docklands, and Flagstaff Gardens.

On the ground floor, a variety of shops, a liquor store, a convenience store, an Anytime Fitness facility, and a popular café, recognized as an influencer on the internet, contribute to the vibrant atmosphere.

Inside the apartment, cleverly crafted joinery plays with geometry, juxtaposing strong and robust materiality against a soft, warm palette. The semi-professional chef's kitchen is impeccably equipped for entertaining, while the bedrooms offer ample storage and integrated bespoke finishes, including a semi walk-in wardrobe. Timeless bathrooms provide a serene retreat in an understated environment.

Key features of the apartment include:

- Spacious 99.5 square meters
- Open kitchen, dining, and living area
- Two bedrooms with built-in robes
- Two bathrooms
- A dedicated study area with shelving
- Expansive balcony
- Separate laundry
- One underground car park space and one storage cage
- Live in luxury and style, surrounded by the best of West Melbourne's offerings.

More About this Property

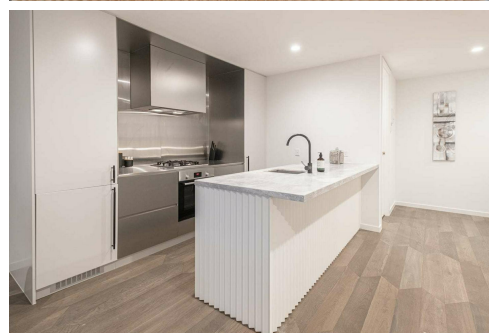
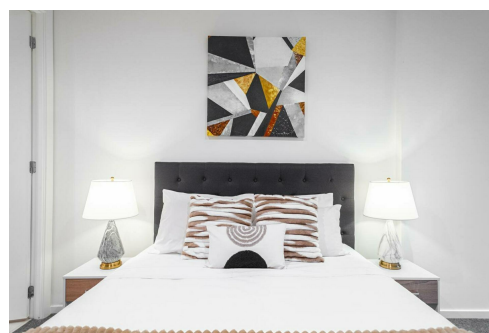
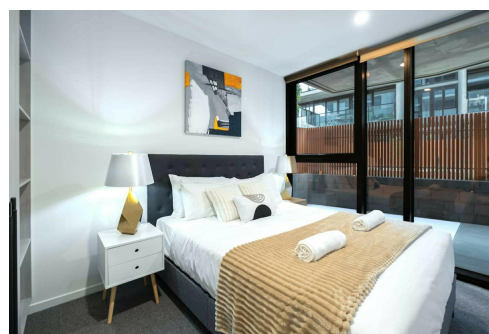
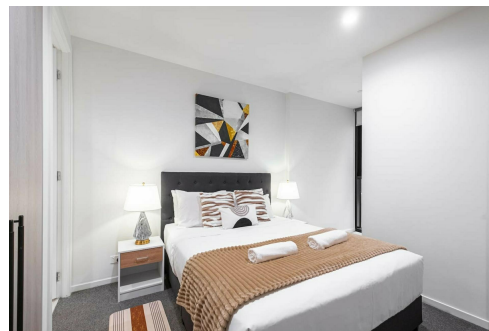
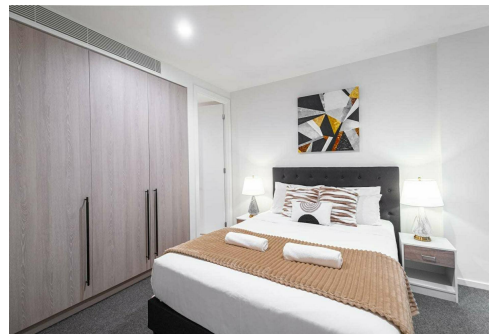
Property ID	MP8HC2
Property Type	Apartment

Yannie Hou 0416 868 512

Senior Property Consultant | yhou.rowville@ljhooker.com.au

LJ Hooker City Residential (03) 9600 2166

Upper Ground Floor, 439-445 Lonsdale St, MELBOURNE VIC 3000
cityresmelbourne.ljhooker.com.au | cityresmelbourne@ljhooker.com.au



LJ Hooker City Residential
(03) 9600 2166

Disclaimer: All information contained therein is gathered from relevant third parties sources. We cannot guarantee or give any warranty about the information provided. Interested parties must rely solely on their own enquiries.

