



13/21-23 Tuffley Street, West End

SPACIOUS TOWNHOUSE LIVING -END UNIT WITH PRIVATE COURTYARD

This well-presented two-bedroom townhouse combines convenience, comfort, and lifestyle in a prime location. Perfect for investors, downsizers, or first-home buyers.

FEATURES YOU WILL LOVE.....

- End unit position with a large, private courtyard - perfect for relaxing or entertaining
- Functional kitchen with servery window flowing to the dining and living area
- Cool tiled flooring downstairs + cozy carpet upstairs in bedrooms and stairwell
- Air-conditioned throughout for year-round comfort
- Internal laundry plus an extra downstairs toilet for added convenience
- Lockable carport with generous storage area
- Visitor parking right next door - no need to hunt for a space
- Secure, well-maintained gated complex of just 22 units

2 🏠 1 🚿 1 🚗

FOR SALE

Offers From \$400,000

AGENTS

Suzanne Coverlid

0439 032 210

suzanne.coverlid@ljhooker.com.au

AGENCY

LJ Hooker Townsville

07 44262125

All information contained therein is gathered from relevant third parties sources.
We cannot guarantee or give any warranty about the information provided.
Interested parties must rely solely on their own enquiries.

 **LJ Hooker**

Walking distance to Castletown Shopping Centre and only minutes to Townsville CBD

MORE DETAILS

Property ID 42CHWK
Property Type House
Including Toilets (2)

Suzanne Coverlid 0439 032 210

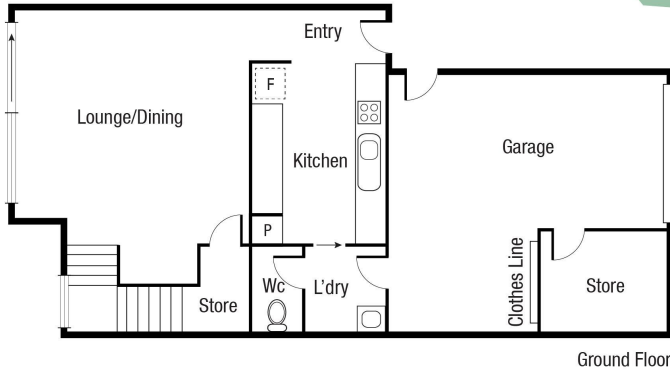
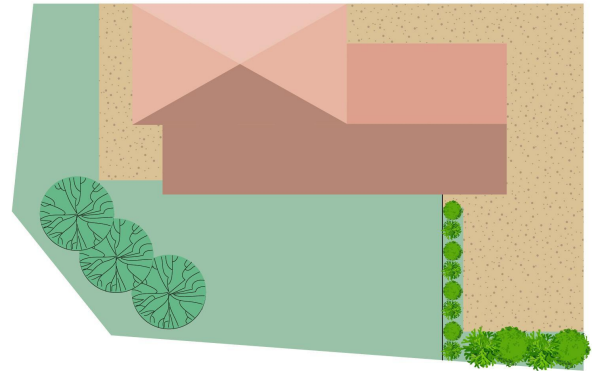
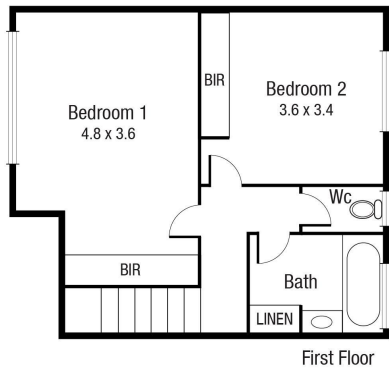
Sales & Marketing Consultant | suzanne.coverlid@ljhooker.com.au

LJ Hooker Townsville 07 44262125

Shop 18/39 Eyre Street, NORTH WARD QLD 4810
townsville.ljhooker.com.au | townsville@ljhooker.com.au



All information contained therein is gathered from relevant third parties sources.
We cannot guarantee or give any warranty about the information provided.
Interested parties must rely solely on their own enquiries.



Scale in metres. Indicative only. Dimensions are approximate. All information contained herein is gathered from sources we believe to be reliable. However we cannot guarantee its accuracy and interested persons should rely on their own enquiries.

TOTAL AREA : 116.1 sq.m

Unit 13/21-23 Tuffley