



West End, 9A Regent Street

The Home that Keeps on Giving

The work has been done, all you have to do is move on in! The vendors have loved living here for 20 plus years but it's now time to move on, which means a great opportunity for you!

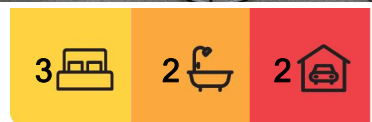
With two heat pumps for all-season comfort, three spacious bedrooms, and a flexible bonus room, there's plenty of room for the whole family and pets. The open plan lounge, dining and modern kitchen is a sunny, cozy space. The expansive deck that flows off the back of the house is perfect for lounging in the sun over the next few months and that leads to a bonus room to be used however you envision. With plenty of off street parking and a double garage - not to mention lots of storage!

Don't miss this one, schedule a viewing with the team now!

Features:



Disclaimer: All information contained therein is gathered from relevant third parties sources. We cannot guarantee or give any warranty about the information provided. Interested parties must rely solely on their own enquiries.



For Sale
Enquiries Over \$599,000

View
ljhooker.co.nz/1559GTA

Contact
Ben Groundwater
027 415 6405
ben.timaru@ljhooker.co.nz
Joelle Snook
027 844 5432
joelle.timaru@ljhooker.co.nz

LJ Hooker Timaru
(03) 688 3029
Enting Real Estate Limited

- Gas hot water
- Double glazed
- Bonus room
- Double garage
- Two heat pumps
- Brick

Bonus Room Virtual Tour (copy & paste into browser):

<https://my.matterport.com/show/?m=adqdbsc7uKD>

Disclaimer:

This information has been supplied by the owners and Corelogic. LJ Hooker Timaru, Geraldine and Waimate are merely passing over this information as supplied to us. We cannot guarantee its accuracy and reliability as we have not checked, audited or reviewed the information. All intending purchasers are advised to conduct their own due diligence investigation into this information. To the maximum extent permitted by law, we do not accept any responsibility to any part for the accuracy or use of the information herein. Enting Real Estate Limited Licensed (REAA 2008).

More About this Property

Property ID	1559GTA
Property Type	House
House Size	130 m ²
Land Area	834 m ²
Licensed Real Estate Agents (REAA2008)	

Ben Groundwater 027 415 6405

Property Consultant | ben.timaru@ljhooker.co.nz

Joelle Snook 027 844 5432

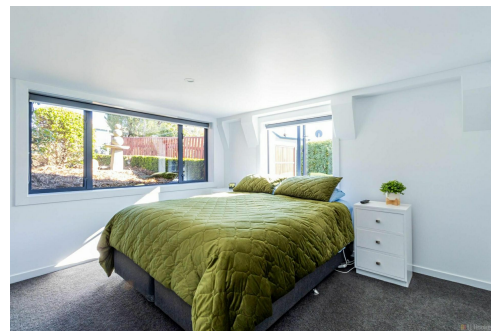
Property Consultant | joelle.timaru@ljhooker.co.nz

LJ Hooker Timaru (03) 688 3029

Enting Real Estate Limited

51 Church Street, TIMARU 7910

timaru.ljhooker.co.nz | timaru@ljhooker.co.nz



Disclaimer: All information contained therein is gathered from relevant third parties sources.

We cannot guarantee or give any warranty about the information provided. Interested parties must rely solely on their own enquiries.

LJ Hooker Timaru

(03) 688 3029

Enting Real Estate Limited