



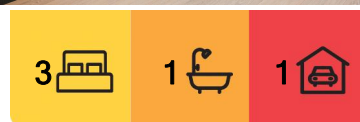
## West End, 6 Thomas Street

Looking to Work from Home?

Hairdresser? Beautician or bookkeeper? Whatever, the studio at 6 Thomas Street is a brilliant brand spankers build, it is a great expense and it's here now! This studio space is versatile and could be used as desired (council consent may be required).

With a sheltered outdoor entertainment area, the perfect spot for a kick-back wine and dine —pop the out-door heater on and you're good to go. The house itself is different again, very open with a studio style feel. Featuring a kitchen with personality and warmth, another wonderful entertainer's area. Three good-sized bedrooms, one modern bathroom and a lovely front deck sitting to the morning sun.

It has been re-wired with new carpet, hardiplank and aluminium windows, both a log burner and heat pump this is one cool house with a bit of funk! Move in, pop up some artwork, make a cheeseboard and enjoy your new home. Call me for a viewing now, you don't want to miss out!



**For Sale**

Enquiries Over \$489,000

**View**

[ljhooker.co.nz/15EAGTA](http://ljhooke.co.nz/15EAGTA)

**Contact**

**Anja Gordon**

021 489 425

[anja@ljhtimaru.co.nz](mailto:anja@ljhtimaru.co.nz)



**Disclaimer:** All information contained therein is gathered from relevant third parties sources.

We cannot guarantee or give any warranty about the information provided. Interested parties must rely solely on their own enquiries.

**LJ Hooker Timaru**

**(03) 688 3029**

Enting Real Estate Limited



**Disclaimer:**

This information has been supplied by the owners and Corelogic. LJ Hooker Timaru, Geraldine and Waimate are merely passing over this information as supplied to us. We cannot guarantee its accuracy and reliability as we have not checked, audited or reviewed the information. All intending purchasers are advised to conduct their own due diligence investigation into this information. To the maximum extent permitted by law, we do not accept any responsibility to any part for the accuracy or use of the information herein. Enting Real Estate Limited Licensed (REAA 2008).

## More About this Property

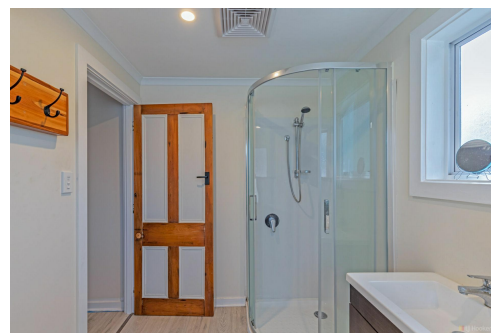
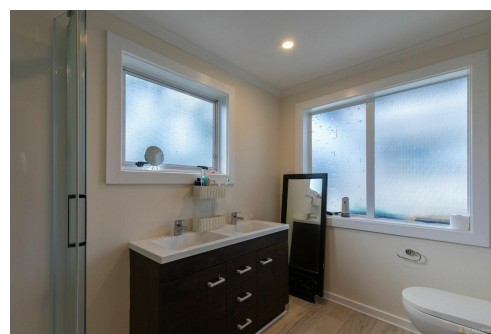
<b>Property ID</b>	15EAGTA
<b>Property Type</b>	House
<b>House Size</b>	96 m2
<b>Land Area</b>	458 m2
<b>Licensed Real Estate Agents (REAA2008)</b>	

**Anja Gordon 021 489 425**

Property Consultant | [anja@ljhtimaru.co.nz](mailto:anja@ljhtimaru.co.nz)

**LJ Hooker Timaru (03) 688 3029**

Enting Real Estate Limited  
51 Church Street, TIMARU 7910  
[timaru.ljhooker.co.nz](http://timaru.ljhooker.co.nz) | [timaru@ljhooker.co.nz](mailto:timaru@ljhooker.co.nz)



**Disclaimer:** All information contained therein is gathered from relevant third parties sources. We cannot guarantee or give any warranty about the information provided. Interested parties must rely solely on their own enquiries.

**LJ Hooker Timaru**  
**(03) 688 3029**  
Enting Real Estate Limited