



## West End, 51 Avenue Road

You've Got Style

This amazingly presented home has been immaculately renovated with great attention to detail. In a central location close to everything you'd need. The large, fully fenced backyard provides plenty of space for kids and pets to play, while the well-maintained garden adds to the charm. With an outdoor relaxation area to enjoy, perfect for unwinding, along with a dedicated bar area for effortless entertaining, you'll never want to leave!

Partially double glazed and equipped with both a fireplace and a heat pump, this home ensures year-round comfort. The modern kitchen and bathroom are fully equipped with everything you need, so you can simply move in and unwind. Featuring two spacious double bedrooms, one with a handy study nook and excellent storage throughout, this home is ready to welcome you!

Features:

- Two double bedrooms



**Disclaimer:** All information contained therein is gathered from relevant third parties sources.

We cannot guarantee or give any warranty about the information provided. Interested parties must rely solely on their own enquiries.

2

1

1

**For Sale**

Enquiries Over \$529,000

**View**

[ljhooke.co.nz/15DWGTA](https://ljhooke.co.nz/15DWGTA)

**Contact**

**Ben Groundwater**

027 415 6405

[ben.timaru@ljhooker.co.nz](mailto:ben.timaru@ljhooker.co.nz)

**Anja Gordon**

021 489 425

[anja@ljhtimaru.co.nz](mailto:anja@ljhtimaru.co.nz)

**LJ Hooker Timaru**

**(03) 688 3029**

Enting Real Estate Limited

- Wood burner (expires 2030)
- Gas hot water
- Gas stove
- Two toilets
- Single garage
- Workshop
- Deck and outdoor bar

Disclaimer:

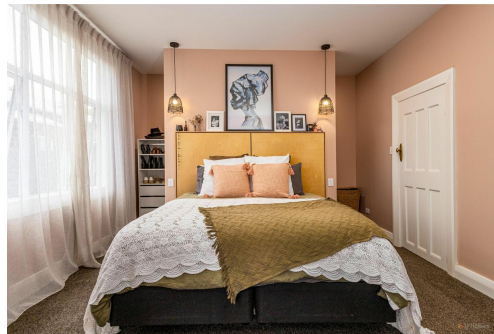
This information has been supplied by the owners and Corelogic. LJ Hooker Timaru, Geraldine and Waimate are merely passing over this information as supplied to us. We cannot guarantee its accuracy and reliability as we have not checked, audited or reviewed the information. All intending purchasers are advised to conduct their own due diligence investigation into this information. To the maximum extent permitted by law, we do not accept any responsibility to any part for the accuracy or use of the information herein. Enting Real Estate Limited Licensed (REAA 2008).

## More About this Property

Property ID	15DWGTA
Property Type	House
House Size	110 m2
Land Area	698 m2
Including	Toilets (2)
Licensed Real Estate Agents (REAA2008)	

**Ben Groundwater 027 415 6405**  
 Property Consultant | ben.timaru@ljhooker.co.nz  
**Anja Gordon 021 489 425**  
 Property Consultant | anja@ljhtimaru.co.nz

**LJ Hooker Timaru (03) 688 3029**  
 Enting Real Estate Limited  
 51 Church Street, TIMARU 7910  
 timaru.ljhooker.co.nz | timaru@ljhooker.co.nz



**Disclaimer:** All information contained therein is gathered from relevant third parties sources. We cannot guarantee or give any warranty about the information provided. Interested parties must rely solely on their own enquiries.

**LJ Hooker Timaru**  
**(03) 688 3029**  
 Enting Real Estate Limited