



West End, 27A Rathmore Street

Red Brick on Rathmore

This solid brick home in West End is conveniently located close to schools, shops, and transport. Featuring two bedrooms with built-in wardrobes indoors plus a handy sleepout outside. The tidy and modern kitchen is well-equipped, with a separate living area and sunroom leading from here. The bathroom is also modern with a shower over bath and a separate toilet. The home offers ample storage throughout.

With a private back yard full of greenery, it is a great area for kids to play hide and seek in the trees and pets to run around all day.

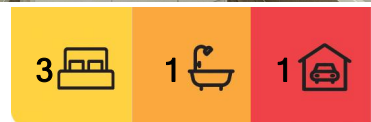
Whether you're a first home buyer or looking for a great investment opportunity, this property ticks all the boxes. Don't miss out on this fantastic opportunity!

Features:

-Single garage



Disclaimer: All information contained therein is gathered from relevant third parties sources. We cannot guarantee or give any warranty about the information provided. Interested parties must rely solely on their own enquiries.



For Sale

Enquiries Over \$429,000

View

ljhooke.co.nz/15APGTA

Contact

Ben Groundwater

027 415 6405

ben.timaru@ljhooke.co.nz

Joelle Snook

027 844 5432

joelle.timaru@ljhooke.co.nz

LJ Hooker Timaru

(03) 688 3029

Enting Real Estate Limited

- Sunroom
- Sleepout
- Electric hot water
- Red brick

Disclaimer:

This information has been supplied by the owners and Corelogic. LJ Hooker Timaru, Geraldine and Waimate are merely passing over this information as supplied to us. We cannot guarantee its accuracy and reliability as we have not checked, audited or reviewed the information. All intending purchasers are advised to conduct their own due diligence investigation into this information. To the maximum extent permitted by law, we do not accept any responsibility to any part for the accuracy or use of the information herein. Enting Real Estate Limited Licensed (REAA 2008).

More About this Property

Property ID	15APGTA
Property Type	House
House Size	90 m ²
Land Area	835 m ²
Licensed Real Estate Agents (REAA2008)	

Ben Groundwater 027 415 6405

Property Consultant | ben.timaru@ljhooker.co.nz

Joelle Snook 027 844 5432

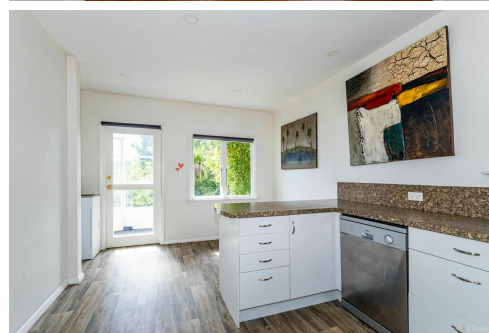
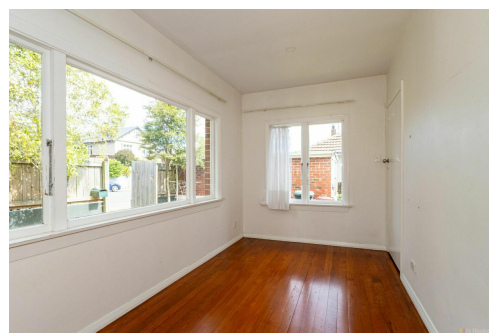
Property Consultant | joelle.timaru@ljhooker.co.nz

LJ Hooker Timaru (03) 688 3029

Enting Real Estate Limited

51 Church Street, TIMARU 7910

timaru.ljhooker.co.nz | timaru@ljhooker.co.nz



LJ Hooker Timaru
(03) 688 3029
 Enting Real Estate Limited

Disclaimer: All information contained therein is gathered from relevant third parties sources. We cannot guarantee or give any warranty about the information provided. Interested parties must rely solely on their own enquiries.