



## West End, 23 Regent Street

Did I Hear You Say Perfection?

23 Regent Street has undergone meticulous renovation, leaving no detail overlooked. The vendors have executed an exceptional job, presenting a home ready for its fortunate new owners. Providing three spacious bedrooms and open-plan living that seamlessly transitions into the dining room and lounge, each area basks in sunlight throughout the day. The bathroom showcases a feature wall adorned with tongue-and-groove rimu, complemented by sleek black fittings.

The property is well-positioned and sits up high off the street. Off-street parking is convenient, with a double garage and plenty of space for a caravan or other toys.

### Key Features

- Heat transfer to rooms
- Butlers pantry
- Outdoor lights



**Disclaimer:** All information contained therein is gathered from relevant third parties sources. We cannot guarantee or give any warranty about the information provided. Interested parties must rely solely on their own enquiries.

3

1

2

**For Sale**  
\$609,000

**View**  
[l.jhooker.co.nz/14WPGTA](https://l.jhooker.co.nz/14WPGTA)

**Contact**  
**Joelle Snook**  
027 844 5432  
[joelle.timaru@l.jhooker.co.nz](mailto:joelle.timaru@l.jhooker.co.nz)

**Ben Groundwater**  
027 415 6405  
[ben.timaru@l.jhooker.co.nz](mailto:ben.timaru@l.jhooker.co.nz)

**LJ Hooker Timaru**  
**(03) 688 3029**  
Enting Real Estate Limited

- Linea board exterior
- Flat & well maintained section
- Fully fenced & private backyard

Disclaimer:

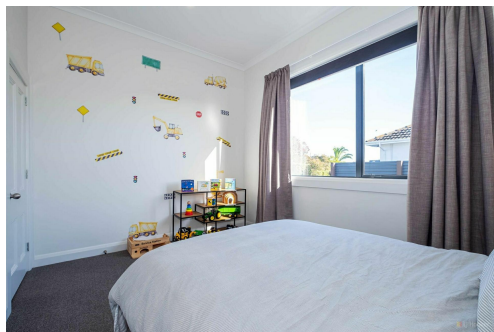
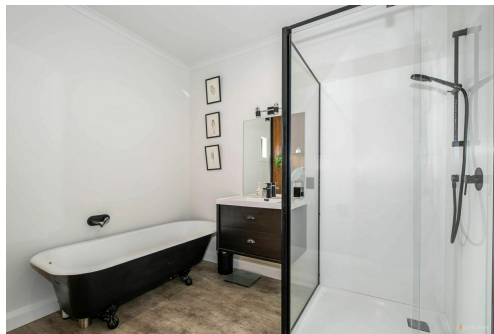
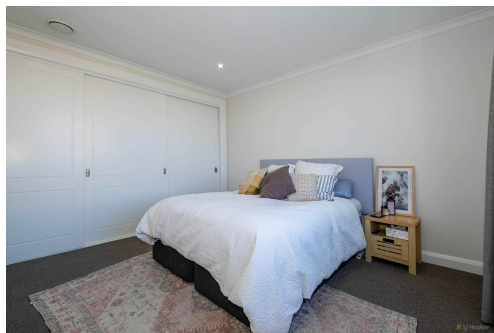
This information has been supplied by the owners and Corelogic. LJ Hooker Timaru, Geraldine and Waimate are merely passing over this information as supplied to us. We cannot guarantee its accuracy and reliability as we have not checked, audited or reviewed the information. All intending purchasers are advised to conduct their own due diligence investigation into this information. To the maximum extent permitted by law, we do not accept any responsibility to any part for the accuracy or use of the information herein. Enting Real Estate Limited Licensed (REAA 2008).

## More About this Property

Property ID	14WPGTA
Property Type	House
House Size	130 m²
Land Area	809 m²
Licensed Real Estate Agents (REAA2008)	

**Joelle Snook 027 844 5432**  
 Property Consultant | joelle.timaru@ljhooker.co.nz  
**Ben Groundwater 027 415 6405**  
 Property Consultant | ben.timaru@ljhooker.co.nz

**LJ Hooker Timaru (03) 688 3029**  
 Enting Real Estate Limited  
 51 Church Street, TIMARU 7910  
 timaru.ljhooker.co.nz | timaru@ljhooker.co.nz



**Disclaimer:** All information contained therein is gathered from relevant third parties sources. We cannot guarantee or give any warranty about the information provided. Interested parties must rely solely on their own enquiries.

**LJ Hooker Timaru**  
**(03) 688 3029**  
 Enting Real Estate Limited