



## West Busselton, 21 Thomas Street

Make This Beautiful Home Yours Today!!!

Welcome to your next dream home! This beautifully designed property offers the perfect combination of comfort, style, and functionality. From the spacious master suite to the open-plan living spaces, you'll find everything you need to live comfortably. Let's take a closer look at what this home has to offer.

### Key Features:

#### BED 'N' BATH:

- \* Plush carpet
- \* Walk-in robe (WIR)
- \* Ensuite with separate toilet, vanity, heat lamp

#### ADDITIONAL ROOMS:

- \* 5 Bedrooms, all carpeted with WIR



**Disclaimer:** All information contained therein is gathered from relevant third parties sources. We cannot guarantee or give any warranty about the information provided. Interested parties must rely solely on their own enquiries.

**SOLD**



### For Sale

Offers From \$1,850,000

### View

[ljhooker.com.au/177BHND](http://ljhooker.com.au/177BHND)

### Contact

**Karen Kemp**

0417 178 098

[karen.kemp@ljhsouthwest.com.au](mailto:karen.kemp@ljhsouthwest.com.au)

**LJ Hooker Property South West WA**  
**(08) 9791 6880**

- \* Office/study space
- \* Carpeted lounge area
- \* Light-filled, bright room

#### KITCHEN:

- \* 900mm double-door oven
- \* Gas cooktop & stainless steel range hood
- \* Dishwasher
- \* Plumbed-in wide fridge recess
- \* Walk-in pantry
- \* Powered island bench
- \* Laminate countertops and ample cupboard storage

#### LIVING AREAS:

- \* Open-plan living and dining with high raised ceilings
- \* Bright, light-filled rooms

#### BATHROOMS:

- \* Bath in the minor bathroom
- \* 2nd toilet for convenience

#### LAUNDRY:

- \* Functional and spacious laundry area

#### STORAGE:

- \* Ample linen storage in the hallway linen cupboard with 6 doors

#### ADDITIONAL FEATURES:

- \* LED lights throughout
- \* TV points throughout the home
- \* Cork flooring in high-traffic areas
- \* Ornate cornicing throughout the home
- \* Wooden skirting boards throughout
- \* Security flyscreen at the front door
- \* Ducted reverse cycle air conditioning (station controlled)
- \* Internal access from wide double garage with electric roller doors

#### OUTDOOR LIVING:

- \* Alfresco area is paved, covered, and north-facing with a pitched roof
- \* Side access through garage
- \* 6x6m general purpose shed
- \* Wooden cubby house
- \* Reticulated, established easy-care lawn and gardens
- \* Outdoor shower
- \* Fruit trees throughout the garden
- \* Solar panels to reduce your energy bills
- \* Wood fire to center for cozy family gatherings

Don't miss out on this stunning home!



**LJ Hooker Property South West WA**  
**(08) 9791 6880**

**Disclaimer:** All information contained therein is gathered from relevant third parties sources. We cannot guarantee or give any warranty about the information provided. Interested parties must rely solely on their own enquiries.

Call Karen Kemp today on 0417 178 098 to arrange your private viewing!

Disclaimer - whilst every care has been taken in the preparation of this advertisement and the approximate outgoings, all information supplied by the seller and the sellers agent is provided in good faith. Prospective purchasers are encouraged to make their own enquiries to satisfy themselves on all pertinent matters. Images are for illustrative purposes.

## More About this Property

<b>Property ID</b>	177BHND
<b>Property Type</b>	House
<b>House Size</b>	238 m2
<b>Land Area</b>	864 m2
<b>Including</b>	Study Air Conditioning Ducted Cooling Ducted Heating Dishwasher Outdoor Entertaining Workshop Built-in-Robes Secure Parking Fully Fenced Solar Panels Liveability

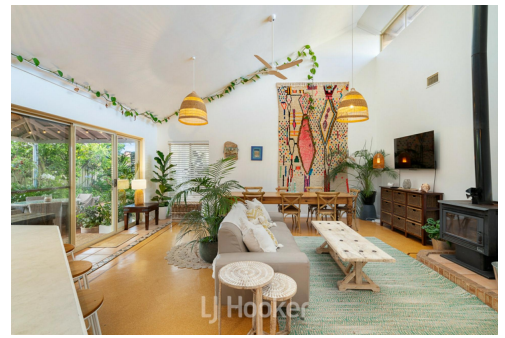
**Karen Kemp 0417 178 098**

Sales Consultant - Busselton | [karen.kemp@ljhsouthwest.com.au](mailto:karen.kemp@ljhsouthwest.com.au)

**LJ Hooker Property South West WA (08) 9791 6880**

130 Victoria Street, BUNBURY WA 6230

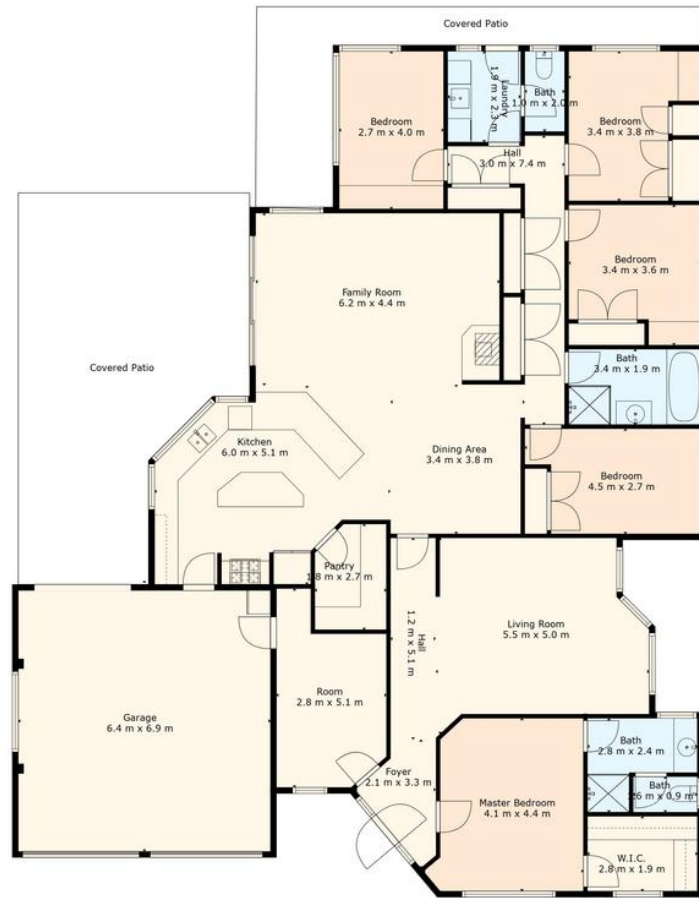
[southwestwa.ljhooker.com.au](http://southwestwa.ljhooker.com.au) | [bunbury@ljhsouthwest.com.au](mailto:bunbury@ljhsouthwest.com.au)



**Disclaimer:** All information contained therein is gathered from relevant third parties sources.

We cannot guarantee or give any warranty about the information provided. Interested parties must rely solely on their own enquiries.

**LJ Hooker Property South West WA  
(08) 9791 6880**



**TOTAL: 226 m2**  
**FLOOR 1: 226 m2**  
**EXCLUDED AREAS: GARAGE: 43 m2**

Prepared For The Exclusive Use Of LJ Hooker Southwest, Sizes And Dimensions Are Approximate, Actual May Vary.



**LJ Hooker Property South West WA**  
**(08) 9791 6880**

**Disclaimer:** All information contained therein is gathered from relevant third parties sources. We cannot guarantee or give any warranty about the information provided. Interested parties must rely solely on their own enquiries.