

6128 Frankford Road, Wesley Vale


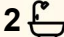
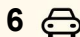
## Your Tasmanian Heritage Lifestyle

Set on more than three acres in sought after Wesley Vale, Dunvegan is a remarkable country estate where history, craftsmanship and modern comfort come together with ease.

Originally built circa 1910, this substantial residence has been carefully restored to honour its heritage while embracing contemporary living. Triple brick construction, soaring ceilings, original blackwood floors, wood heating, fire places and a grand central hallway create an immediate sense of scale, quality and permanence that is rarely found today.

At the heart of the home, the beautifully renovated kitchen blends timeless design with premium functionality. A Falcon gas cooker, granite island bench, porcelain sink, Miele appliances and bespoke cabinetry create a space equally suited to everyday living and entertaining. The adjoining dining area is bathed in natural light and connects seamlessly to the outdoor entertaining space.

The home offers six bedrooms, including a private upstairs retreat complete with walk in robe, ensuite with underfloor heating and balcony overlooking the grounds. Throughout, thoughtful upgrades including custom window furnishings, quality fittings, security systems and a new reverse cycle ensure comfort without compromising character.

6  2  6 

### FOR SALE

Offers Over \$1,250,000

### VIEW

By Appointment

### AGENTS

Melissa Burt  
0448 564 561  
melissa.burt@ljhooker.com.au

Michael Ziegler  
0409 764 219  
michael.ziegler@ljhooker.com.au

### AGENCY

LJ Hooker Devonport  
0473 104 200

All information contained therein is gathered from relevant third parties sources.  
We cannot guarantee or give any warranty about the information provided.  
Interested parties must rely solely on their own enquiries.

 **LJ Hooker**

Beyond the home, the infrastructure is exceptional. Powered garages and workshops, a dedicated produce preparation kitchen, established gardens, orchard, extensive vegetable beds, two waterholes, bore water and ample tank storage provide a level of self sufficiency and flexibility rarely available so close to Devonport and the airport. Whether you're seeking a distinguished family residence, a lifestyle property with room to grow, or a unique holding with future potential (STCA), Dunvegan offers a combination of character, scale and infrastructure that is genuinely difficult to replicate. Properties of this calibre are seldom offered and private inspections are strongly encouraged.

The information contained herein has been supplied to us by sources which are considered reliable, and we have no reason to doubt its accuracy. However, all interested parties should make their own enquiries to verify this information to be correct. All measurements are approximate and are for illustrative purposes only.

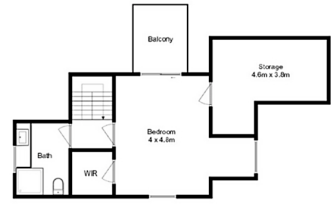
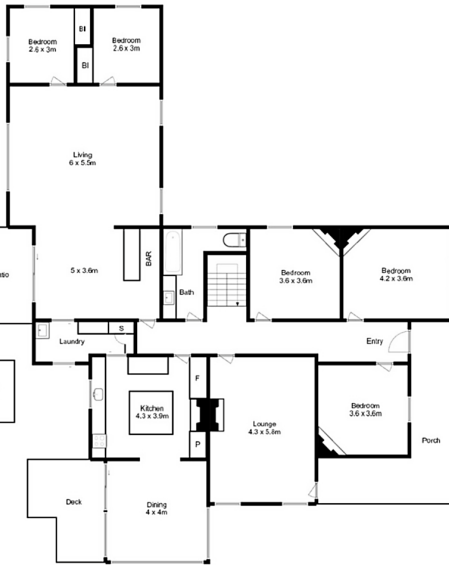
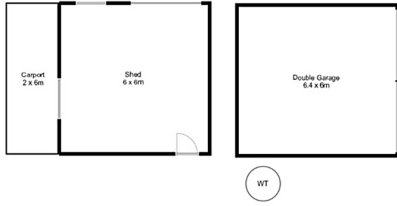
## MORE DETAILS

Property ID	87YHVM
Property Type	House
Land Area	1.4 hectare
Including	<ul style="list-style-type: none"> <li>Ensuite</li> <li>Air Conditioning</li> <li>Ducted Heating</li> <li>Toilets (2)</li> <li>Alarm</li> <li>Fire Place</li> <li>Courtyard</li> <li>Balcony</li> <li>Dishwasher</li> <li>Outdoor Entertaining</li> <li>Floorboards</li> <li>Workshop</li> <li>Built-in-Robes</li> <li>Secure Parking</li> <li>Fully Fenced</li> <li>Remote Garage</li> <li>Water Tank</li> </ul>

**Melissa Burt** 0448 564 561  
 Director | [melissa.burt@ljhooker.com.au](mailto:melissa.burt@ljhooker.com.au)  
**Michael Ziegler** 0409 764 219  
 Licensee | [michael.ziegler@ljhooker.com.au](mailto:michael.ziegler@ljhooker.com.au)

**LJ Hooker Devonport** 0473 104 200  
 16 Don Road, DEVONPORT TAS 7310  
[devonport.ljhooker.com.au](http://devonport.ljhooker.com.au) | [devonport@ljhooker.com.au](mailto:devonport@ljhooker.com.au)





Upper Level



**6128 Frankford Rd, Wesley Vale**

This plan is a sketch for illustration only.  
 All measurements are internal and approximate.  
 Outbuildings / exterior elements not in position.

