



285 Wesley Vale Road, Wesley Vale

Private Sanctuary

Here is your opportunity to enjoy some privacy and space around you, some great shed space and to live that out of town country lifestyle without being too secluded.

Surrounded by lush farmland this home is situated on a flat 2106m² (approximately) block of land. The bedrooms are of generous proportions which is something that is often lacking in newer homes. The home is bright and sunny offering morning and afternoon sun. Open plan kitchen, dining and living areas with good cupboard and storage options. The home is efficiently heated via the coziness of a wood heater and there are no water or sewerage rates with fresh tank water to enjoy. Added features are two toilets, new water tank, upgraded electricals, a concrete BBQ area at the rear, a horseshoe driveway to ensure easy access and parking with excellent backyard access. As well as the shed there are two car ports for extra undercover parking. The location is great with only a short drive into the township of Latrobe and approximately a 10 minute drive to Devonport or the Airport.

- The information contained herein has been supplied to us by sources which are considered reliable and we have no reason to doubt its accuracy. However, all interested parties should make their own enquiries to verify this information to be correct. All measurements are approximate and are for illustrative purposes only.

All information contained therein is gathered from relevant third parties sources. We cannot guarantee or give any warranty about the information provided. Interested parties must rely solely on their own enquiries.

4 1 4

FOR SALE

Offers Over \$630,000

VIEW

Sat 11th Jul @ 9:45AM - 10:15AM

AGENTS

Michael Ziegler
0409 764 219
michael.ziegler@ljhooker.com.au

Tyla Pyke
0439 228 888
tyla.pyke@ljhooker.com.au

AGENCY

LJ Hooker Devonport
0473 104 200

LJ Hooker

MORE DETAILS

Property ID 8VTHVM
Property Type House
Land Area 1924 m2

Michael Ziegler 0409 764 219

Licensee | michael.ziegler@ljhooker.com.au

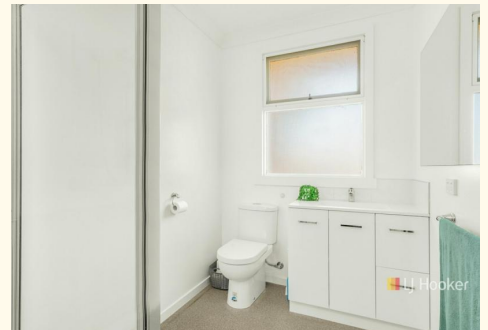
Tyla Pyke 0439 228 888

Property Representative | tyla.pyke@ljhooker.com.au

LJ Hooker Devonport 0473 104 200

16 Don Road, DEVONPORT TAS 7310

devonport.ljhooker.com.au | devonport@ljhooker.com.au



All information contained therein is gathered from relevant third parties sources.
We cannot guarantee or give any warranty about the information provided.
Interested parties must rely solely on their own enquiries.



 **LJ Hooker**

285 Wesley Vale Rd, Wesley Vale

This plan is a sketch for illustration only.
 All measurements are internal and approximate (in metres).
 Outbuildings / exterior elements not in actual position.