



6 Palmerston Walk, Werribee


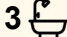

Park Facing Stunning Metricon Townhouse in Harpley Estate

The Property

Welcome to 6 Palmerston Walk, Werribee. Exquisite Metricon-built townhouse featuring a stunning facade and desirable park-facing settings. Inside, expansive open plan living areas are filled with natural light, designed to create a seamless flow for everyday living and entertaining. Boasting four spacious bedrooms, three bathrooms, and a double garage, residents will enjoy being surrounded by lush parks, scenic walking trails, reputable schools, and a variety of essential amenities. With easy access to public transport, residents enjoy exceptional convenience and a lifestyle enriched by nature and connectivity.

The Point of Difference

- Expansive open plan living and dining areas flooded with natural light, creating an inviting space perfect for both relaxing and entertaining
- Four bedrooms including a downstairs bedroom with built-in robe and two-way bathroom; upstairs main includes walk-in robe and ensuite, with two remaining bedrooms equipped with built-in robes and easy access to the modern main bathroom
- A convenient study nook upstairs, offering a dedicated space for

4  3  2 

FOR SALE

\$560,000 - \$600,000

AGENTS

Paul Caine
0421 551 051
paul.caine@ljhooker.com.au

Anu Sharma
0448 218 455
anu.sharma@ljhooker.com.au

AGENCY

LJ Hooker Point Cook
(03) 9975 7080

All information contained therein is gathered from relevant third parties sources.
We cannot guarantee or give any warranty about the information provided.
Interested parties must rely solely on their own enquiries.

 LJ Hooker

- remote work or study
- Well-appointed kitchen with double door pantry, stylish subway tiled splashback, premium stainless-steel appliances, and ample storage
- Private low-maintenance courtyard retreat
- Additional features include an upstairs balcony, ducted heating, split system air conditioning, quality window furnishings, downlights in the living area, security screen back door, separate laundry, and double remote garage

The Point of Interest

Situated in the thriving Harpley Estate, this location offers an exceptional lifestyle framed by stunning natural landscapes and unmatched convenience. Nestled among expansive parks and walking trails, residents have easy access to highly regarded schools, childcare centres, and the Pacific Werribee shopping precinct, offering dining, retail, and entertainment options. Within close proximity, explore the Werribee Open Range Zoo, Werribee Mansion, and Shadowfax Winery. With excellent public transport links to Melbourne's CBD, residents will enjoy a perfect blend of nature and lifestyle. Don't miss this opportunity to join this remarkable community.

Note. All stated dimensions are approximate only. Particulars given are for general information only and do not constitute any representation on the part of the vendor or agent. Any school zoning stated based is on www.findmyschool.vic.gov.au as of 13/08/25.

MORE DETAILS

Property ID 2H0WHGH
 Property Type Townhouse

Paul Caine 0421 551 051

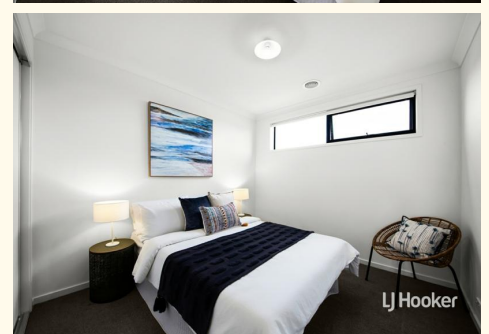
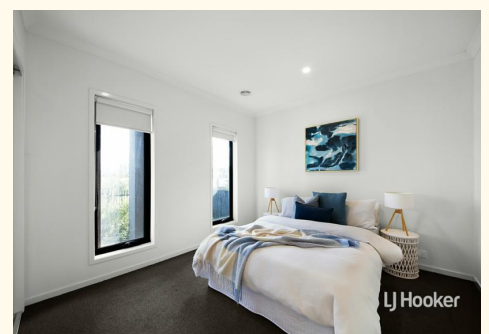
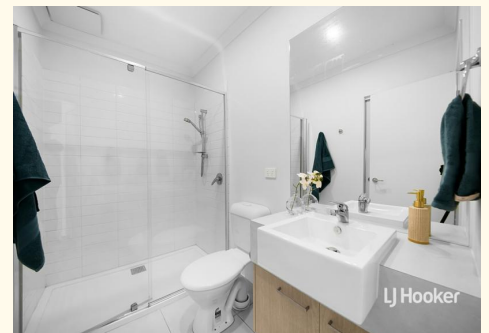
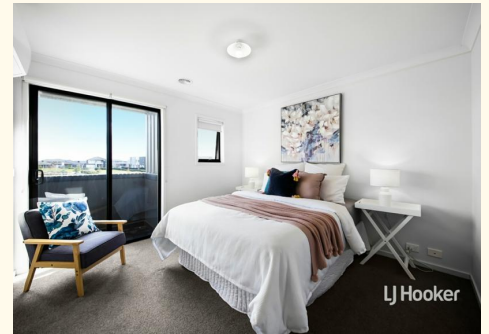
Director | Licensed Estate Agent | Auctioneer |
 paul.caine@ljhooker.com.au

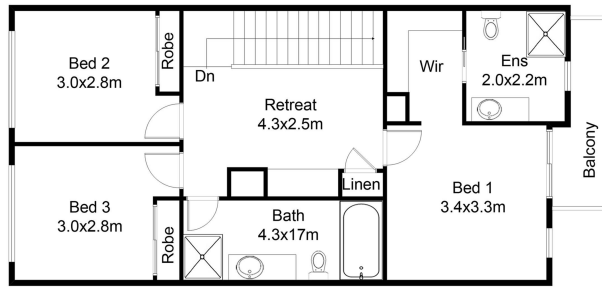
Anu Sharma 0448 218 455

Sales Consultant | anu.sharma@ljhooker.com.au

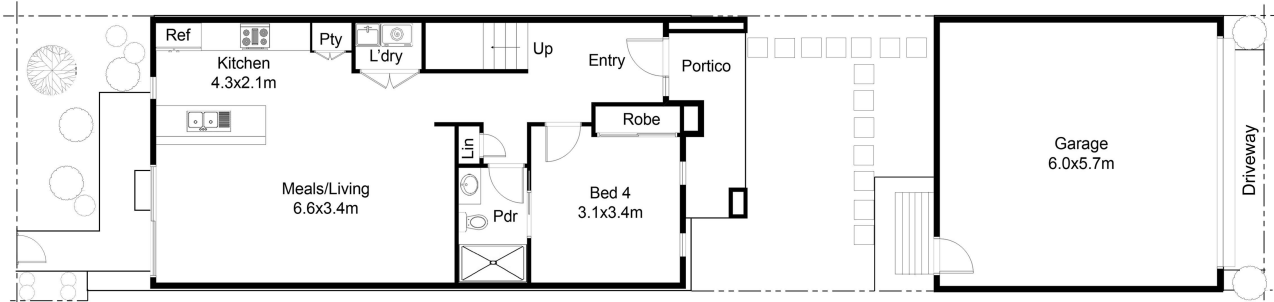
LJ Hooker Point Cook (03) 9975 7080

Shop 211, 4 Main Street, POINT COOK VIC 3030
 pointcook.ljhooker.com.au | pointcook@ljhooker.com.au





FIRST FLOOR



GROUND FLOOR

6 Palmerston Walk, Werribee

This floor plan including furniture, fixture measurements and dimensions are approximate and for illustrative purposes only. BoxBrownie.com gives no guarantee, warranty or representation as to the accuracy and layout. All enquiries must be directed to the agent, vendor or party representing this floor plan.



All information contained therein is gathered from relevant third parties sources. We cannot guarantee or give any warranty about the information provided. Interested parties must rely solely on their own enquiries.

