



12 Bloom Street, Werribee


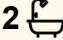
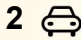
## Contemporary Comfort in Coveted Riverwalk Estate

### The Property

Welcome to 12 Bloom Street, Werribee. A delightful townhouse that perfectly blends stylish comfort and easy, modern living in the highly sought-after Riverwalk Estate. Across two expansive levels, this family residence delivers light-filled interiors, multiple living zones, luxurious bathrooms, and a masterfully designed floor plan that flows seamlessly from indoors to outdoors. A private backyard provides the perfect place to entertain, while the upstairs balcony captures peaceful parkland views. Surrounding areas are filled with attractions and amenities that enhance everyday convenience, including parks, quality schools, shopping centres, and Werribee's very own zoo.

### The Point of Difference

- Step inside to discover two beautifully appointed downstairs living areas — a welcoming formal lounge toward the front of the home and an open-plan family and dining zone flowing seamlessly from the kitchen, flexible spaces for both entertaining and relaxation. A separate, dedicated study provides an additional space for residents to work or learn from home.
- With three remarkable bedrooms, the main suite features an exquisite ensuite, walk-in robe, and quaint balcony boasting a leafy

3  2  2 

**FOR SALE**  
\$560,000 - \$590,000

### AGENTS

Paul Caine  
0421 551 051  
paul.caine@ljhooker.com.au

Mary Jamal  
0451 145 598  
mary.jamal@ljhooker.com.au

### AGENCY

LJ Hooker Point Cook  
(03) 9975 7080

All information contained therein is gathered from relevant third parties sources.  
We cannot guarantee or give any warranty about the information provided.  
Interested parties must rely solely on their own enquiries.

 **LJ Hooker**

parkland outlook. Additional bedrooms are nicely sized with built-in robes and serviced by a stylish central bathroom with bathtub and modern finishes.

- A true highlight of the residence and fit for any proud home chef, the designer kitchen showcases stone benchtops, premium appliances, and plenty of storage capacity.
- Featuring a private, low-maintenance courtyard with artificial turf, this space provides a peaceful outdoor retreat, ideal for relaxing in the sunshine or enjoying easy weekend living.
- Additional highlights include thoughtfully placed air conditioning systems, a downstairs powder room/laundry, plenty of linen storage, and a secure double remote carport.

#### The Point of Interest

Positioned within the vibrant Riverwalk Estate, this address offers an enviable combination of natural beauty and everyday convenience. Residents enjoy proximity to lush parklands, scenic walking trails, and thriving community spaces such as Werribee Park Golf Club, Werribee River Regional Park, and Werribee Open Range Zoo. Local playgrounds, childcare centres, and schools are just moments away, including zoned Riverwalk Primary School, Werribee Secondary College, and more. Easy access to the Princes Freeway, Werribee Train Station, and the town centre ensures seamless travel and a strong sense of convenience. Perfectly suited to modern living, this is a home defined by comfort, luxury, and family lifestyle in one of Werribee's most desirable neighbourhoods.

Note. All stated dimensions are approximate only. Particulars given are for general information only and do not constitute any representation on the part of the vendor or agent. Any school zoning stated based on [www.findmyschool.vic.gov.au](http://www.findmyschool.vic.gov.au) as of 13/10/25.

#### MORE DETAILS

Property ID                    2HDCHGH  
Property Type                Townhouse

#### Paul Caine 0421 551 051

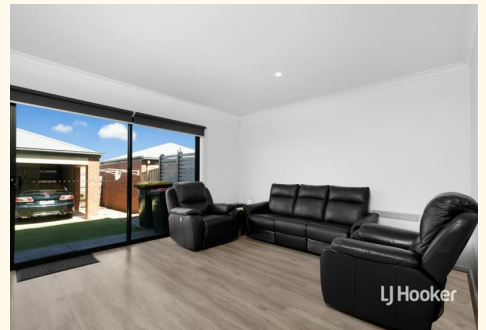
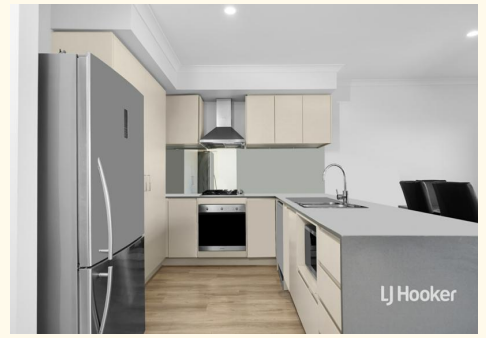
Director | Licensed Estate Agent | Auctioneer |  
paul.caine@ljhooker.com.au

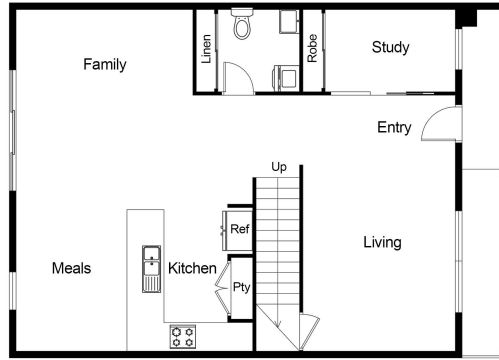
#### Mary Jamal 0451 145 598

Sales Associate | mary.jamal@ljhooker.com.au

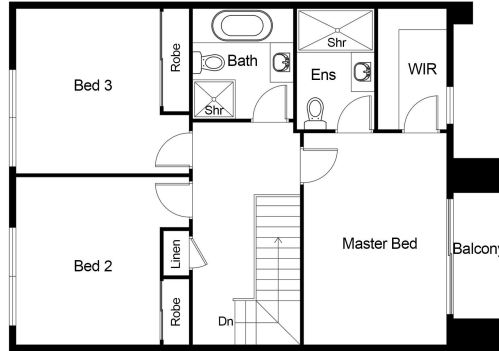
#### LJ Hooker Point Cook (03) 9975 7080

Shop 211, 4 Main Street, POINT COOK VIC 3030  
pointcook.ljhooker.com.au | pointcook@ljhooker.com.au

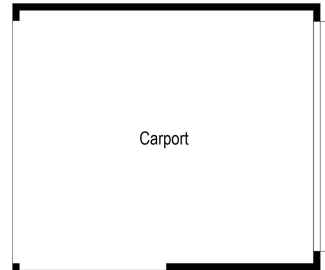




GROUND FLOOR PLAN



FIRST FLOOR PLAN



This floor plan including furniture, fixture measurements and dimensions are approximate and for illustrative purposes only. BoxBrownie.com gives no guarantee, warranty or representation as to the accuracy and layout. All enquiries must be directed to the agent, vendor or party representing this floor plan.

