

6 Sonder Avenue, Werribee

## A Spectacular Family Haven in Harpley Estate

### The Property

Welcome to 6 Sonder Avenue, Werribee. Spanning across two levels, this luxurious residence showcases refined design, generous proportions, and superior quality throughout. Multiple living areas provide a balance of spaces for relaxation, entertaining, and private retreat, enriched by high ceilings and premium finishes that elevate the home's appeal. Flowing seamlessly to the outdoors, the interiors extend to a landscaped oasis where a covered alfresco, firepit zone, and water fountain feature create a superb setting for year-round enjoyment. Perfectly positioned within the prestigious Harpley Estate, this is a home that embodies lifestyle, luxury, and everyday convenience.

### The Point of Difference

- From the moment you step inside, you are graced with beautifully designed living areas that span both levels, capturing a wonderful sense of space and natural light. A refined front lounge sets the tone for elegant relaxation, while expansive family, dining, and meals zones combine with an upstairs rumpus to provide versatile spaces to suit every occasion.
- Boasting four bedrooms, the main suite is a luxurious retreat with

4  2  2 

### FOR SALE

\$860,000 - \$890,000

### AGENTS

Natalie Newdick

0451 992 994

[natalie.newdick@ljhooker.com.au](mailto:natalie.newdick@ljhooker.com.au)

Silvana Masalkovski

0448 846 629

[silvana.masalkovski@ljhooker.com.au](mailto:silvana.masalkovski@ljhooker.com.au)

### AGENCY

LJ Hooker Point Cook

(03) 9975 7080

All information contained therein is gathered from relevant third parties sources. We cannot guarantee or give any warranty about the information provided. Interested parties must rely solely on their own enquiries.

 **LJ Hooker**

walk-in robe, ensuite, and a balcony, while the remaining bedrooms with built-in robes are serviced by a central bathroom featuring a freestanding bath.

- A stunning kitchen appointed with expansive stone benchtops, an island breakfast bar, premium 900mm stainless-steel appliances, a fully fitted butler's pantry, and custom cabinetry, complemented by a remarkable banqueting section that wraps around the dining room and showcasing exceptional quality and design.
- Nestled on 441m<sup>2</sup> (approx.), the backyard is a true haven of outdoor living, complete with a decked alfresco, landscaped gardens, a dedicated firepit entertaining zone, and a feature ornamental pond. A perfect backdrop for entertaining and a serene setting for everyday enjoyment.
- Additional highlights include hybrid flooring, zoned ducted heating, high ceilings, evaporative cooling on the upper level, powder room, a separate laundry with external access, remote-controlled double garage with internal entry, LED downlights, quality window furnishings, security doors, and landscaped front gardens - further enhancing the home's premium appeal.

#### The Point of Interest

Set within the highly regarded Harpley Estate, this address balances natural beauty with everyday convenience. Residents are surrounded by lush green landscapes and tranquil waterways that create a peaceful backdrop to daily life. Harpley Town Centre and Pacific Werribee provide excellent shopping, dining, and entertainment, while Wyndham Vale Train Station and major arterials offer seamless connections to Melbourne CBD and Geelong. Families are well catered for with zoning to Lollypop Creek Primary School and Walcom Ngarra Secondary College, complemented by nearby childcare, playgrounds, and sporting facilities. An exceptional opportunity to secure a lifestyle defined by comfort, convenience, and prestige.

Note. All stated dimensions are approximate only. Particulars given are for general information only and do not constitute any representation on the part of the vendor or agent. Any school zoning stated based on [www.findmyschool.vic.gov.au](http://www.findmyschool.vic.gov.au) as of 03/10/25.

#### MORE DETAILS

Property ID	2HB4HGH
Property Type	House
Land Area	441 m <sup>2</sup>

#### Natalie Newdick 0451 992 994

Sales Executive | [natalie.newdick@ljhooker.com.au](mailto:natalie.newdick@ljhooker.com.au)

#### Silvana Masalkovski 0448 846 629

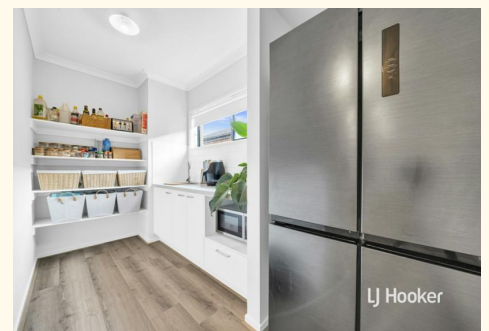
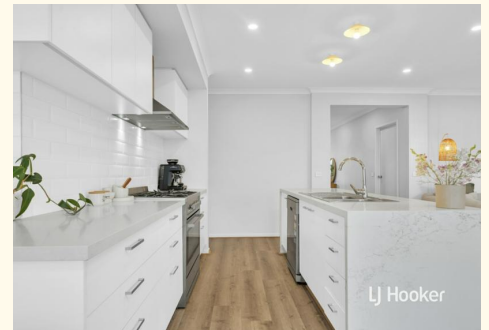
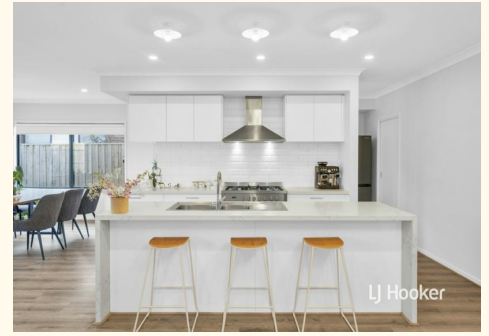
Director | Licensed Estate Agent |

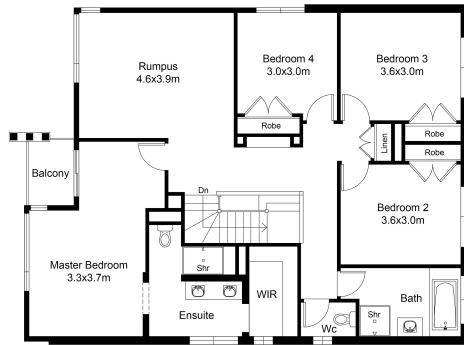
[silvana.masalkovski@ljhooker.com.au](mailto:silvana.masalkovski@ljhooker.com.au)

#### LJ Hooker Point Cook (03) 9975 7080

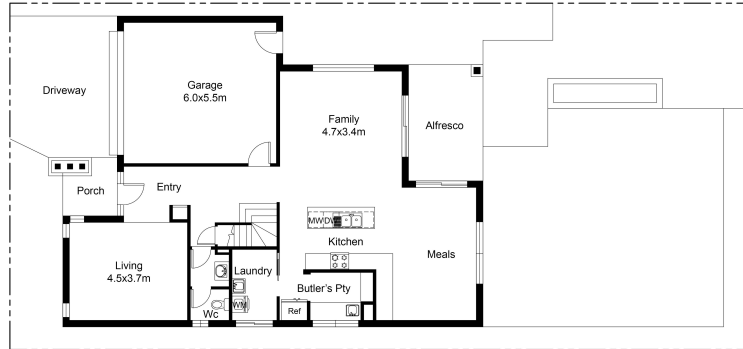
Shop 211, 4 Main Street, POINT COOK VIC 3030

[pointcook.ljhooker.com.au](http://pointcook.ljhooker.com.au) | [pointcook@ljhooker.com.au](mailto:pointcook@ljhooker.com.au)





FIRST FLOOR PLAN



GROUND FLOOR PLAN

This floor plan including furniture, fixture measurements and dimensions are approximate and for illustrative purposes only. BoxBrownie.com gives no guarantee, warranty or representation as to the accuracy and layout. All enquiries must be directed to the agent, vendor or party representing this floor plan.



All information contained therein is gathered from relevant third parties sources. We cannot guarantee or give any warranty about the information provided. Interested parties must rely solely on their own enquiries.

