

6 Lyrebird Court, Werribee

## Charming Family Home Featuring Sun-Filled Lounge and Expansive Outdoors

### The Property

Welcome to 6 Lyrebird Court, Werribee. Spread over a generous single level, this distinguished residence is a unique find with fantastic indoor/outdoor appeal and timeless charm. Four carpeted bedrooms provide peaceful retreats, complemented by light-filled living spaces designed for comfort and connection. Notable features such as ducted heating, evaporative cooling, stainless steel appliances, a large backyard, and a covered carport/alfresco make this home a standout choice for modern family living. Surrounded by lush parks, esteemed schools, retail, dining, and entertainment opportunities, plus Werribee's renowned zoo, the location completes this family sanctuary.

### The Point of Difference

- A welcoming facade greets you as lovingly landscaped front gardens, planted with privacy in mind, offer a range of florals and shrubs, then moving into the home the space flows seamlessly from sun-drenched lounge with towering windows to refined kitchen/dining with side alfresco access.

4 1 2

### FOR SALE

\$550,000 - \$600,000

### AGENTS

Paul Caine  
0421 551 051  
paul.caine@ljhooker.com.au

Mary Jamal  
0451 145 598  
mary.jamal@ljhooker.com.au

### AGENCY

LJ Hooker Point Cook  
(03) 9975 7080

All information contained therein is gathered from relevant third parties sources.  
We cannot guarantee or give any warranty about the information provided.  
Interested parties must rely solely on their own enquiries.

LJ Hooker

- Four carpeted bedrooms fitted with built-in robes and large windows include the spacious main suite, all serviced by a central bathroom with relaxing bathtub, shower, vanity, and separate adjacent toilet for additional convenience.
- The well-appointed kitchen is fitted with a waterfall bench/breakfast bar, plenty of versatile storage options, and quality 600mm stainless steel appliances.
- " With a 568m<sup>2</sup> (approx.) block, this residence offers an abundance of outdoor space with a massive covered alfresco/carport through glass sliding doors off the kitchen, perfectly sized for entertaining guests or to house vehicles, plus a sizeable backyard with lawn, garden shed, water tank, and space for vegetable gardens, kids play equipment, or pets to enjoy.
- Additional highlights include ducted heating, evaporative cooling, additional driveway parking, laminated timber-look flooring, and separate internal laundry.

#### The Point of Interest

Tucked within a friendly Werribee neighbourhood, this address offers a rare blend of natural charm and everyday convenience. Residents are close to leafy parklands, scenic walking trails, and local attractions including Werribee Park Golf Club, Werribee River Regional Park, and Werribee Open Range Zoo. Families benefit from nearby playgrounds, childcare options, and zoned schools such as Wyndham Park Primary and Wyndham Central Secondary College, along with other well-regarded educational facilities. With easy access to the Princes Freeway, Werribee and Hoppers Crossing train stations, and the town centre, commuting is effortless. Combining comfort, style, and family-friendly living, this home captures the best of Werribee's most sought-after communities.

Note. All stated dimensions are approximate only. Particulars given are for general information only and do not constitute any representation on the part of the vendor or agent. Any school zoning stated based on [www.findmyschool.vic.gov.au](http://www.findmyschool.vic.gov.au) as of 12/11/25.

#### MORE DETAILS

Property ID                    2HJDHGH  
Property Type                House

#### Paul Caine 0421 551 051

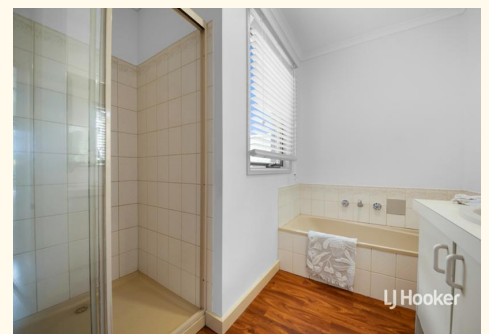
Director | Licensed Estate Agent | Auctioneer |  
paul.caine@ljhooker.com.au

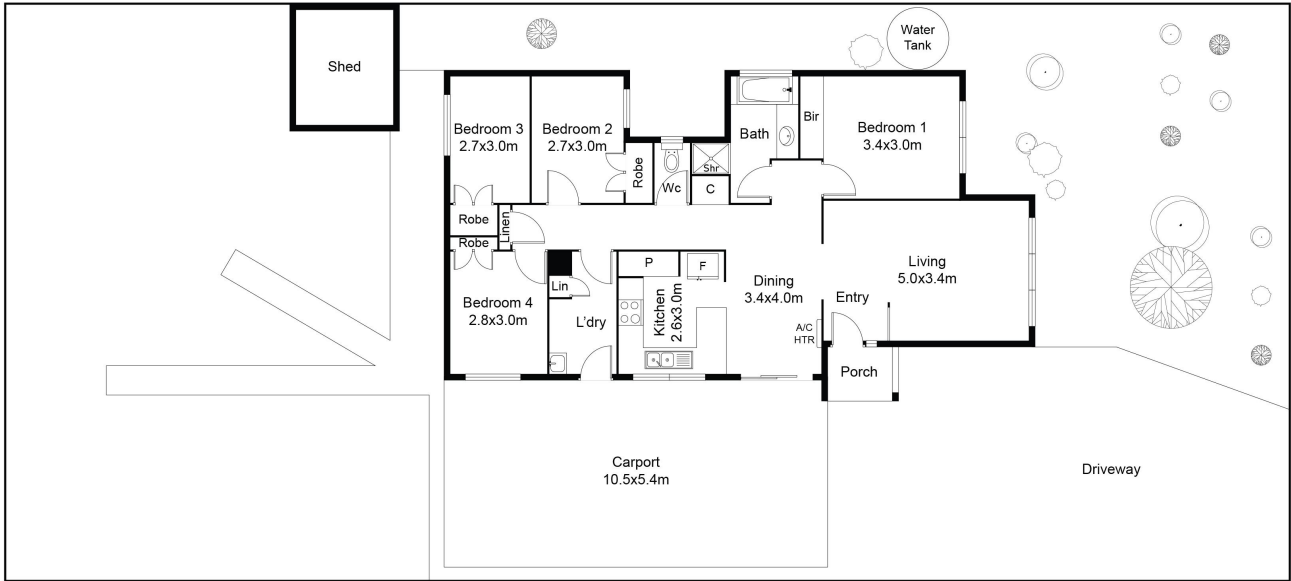
#### Mary Jamal 0451 145 598

Sales Associate | mary.jamal@ljhooker.com.au

#### LJ Hooker Point Cook (03) 9975 7080

Shop 211, 4 Main Street, POINT COOK VIC 3030  
pointcook.ljhooker.com.au | pointcook@ljhooker.com.au





This floor plan including furniture, fixture measurements and dimensions are approximate and for illustrative purposes only. Realty Photos Wyndham gives no guarantee, warranty or representation as to the accuracy and layout. All enquiries must be directed to the agent, vendor or party representing this floor plan.



All information contained therein is gathered from relevant third parties sources. We cannot guarantee or give any warranty about the information provided. Interested parties must rely solely on their own enquiries.

