



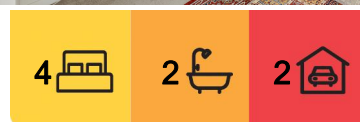
Werribee, 27 Goldeneye Circuit

Refined Luxury - Impeccable Family Living in Beautiful Harpley Estate

LJ Hooker Property Point proudly presents 27 Goldeneye Circuit, Werribee. Displaying the finest in craftsmanship, design and detail, this immaculate residence welcomes families, professionals and investors alike. Constructed by Carlisle Homes and boasting the Piermont 29 floorplan, this beautiful residence offers an abundance of space, comprising three living zones, four bedrooms, two bathrooms and secure parking for two vehicles. Positioned opposite grassy parklands and within minutes of shops, schools and transport options, a lifestyle of leisure awaits.

-With a grand double door entrance, glossy tiling and soaring 2.7-meter ceilings throughout, this residence is immediately impressive, its luxurious inclusions extending to its generous living spaces, including open plan family and meals zones, a media room, rumpus room and a convenient study nook.

-The impeccable kitchen will enchant the home chef, featuring a central island, stone



For Sale

\$795,000 - \$850,000

View

ljhooker.com.au/2F2BHGH

Contact

Patrick Bowen

0414 643 705

patrick.bowen@ljhooker.com.au

Rebecca Zhang

0433 229 168

rebecca.zhang@ljhooker.com.au



Disclaimer: All information contained therein is gathered from relevant third parties sources.

We cannot guarantee or give any warranty about the information provided. Interested parties must rely solely on their own enquiries.

LJ Hooker Point Cook
(03) 9975 7080

countertops and a walk-in pantry. A suite of stainless-steel appliances includes a 900mm upright gas cooker, canopy rangehood and dishwasher, while a breakfast bar caters to casual mealtimes.

-Ample accommodation begins with the primary suite, positioned at the front of the home and boasting a walk-in-robe and private ensuite with double vanity. Three further bedrooms are offered, each with built-in or walk-in robes and shared access to the family bathroom, complete with a bathtub and separate WC.

-Positioned on a 567sqm (approx.) allotment, this north-facing residence offers a striking facade, with feature stonework, iron fencing and beautiful landscaping, including grassy lawns, flowering plants and an established vegetable garden. The covered alfresco awaits outdoor entertaining, its extra-large size perfect for extended gatherings.

-Additional appointments include a double remote-control garage with internal access, a separate laundry, security alarm, security cameras, security screens, solar hot water, ducted heating, split system air conditioning, ceiling fans, glazed windows, double curtains and downlights throughout.

Nestled within the master-planned Harpley Estate, this property is moments from local attractions including Werribee Outdoor Pool, Werribee Open Range Zoo and Werribee South Beach. Nearby amenities include Pacific Werribee, Manor Lakes Central, Werribee Mercy Hospital, St Vincents Hospital and Wyndham Medical Centre. Commuters enjoy easy access to both Melbourne CBD and Geelong via public transport options including Wyndham Vale Station, Werribee Stations and well-serviced bus routes. For students, this property is within catchment of Lollypop Creek Primary School, Walcom Ngarra Secondary College and Nganboo Borron School, with Manor Lakes P-12 College also within proximity. For little ones, a host of childcare facilities are nearby, including Milestone Early Learning, Learners Daycare Centre and Grow and Learn Wallaby Childcare.

Note. All stated dimensions are approximate only. Particulars given are for general information only and do not constitute any representation on the part of the vendor or agent. Any school zoning stated based on www.findmyschool.vic.gov.au as of 09/07/24.

More About this Property

Property ID	2F2BHGH
Property Type	House
Land Area	567 m ²

Patrick Bowen 0414 643 705

Licensed Estate Agent, Auctioneer | patrick.bowen@ljhooker.com.au

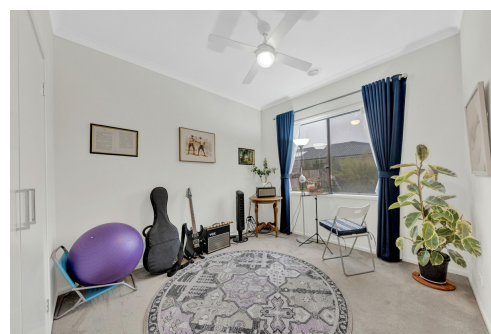
Rebecca Zhang 0433 229 168

Licensed Estate Agent | Auctioneer | rebecca.zhang@ljhooker.com.au

LJ Hooker Point Cook (03) 9975 7080

Shop 211, 4 Main Street, POINT COOK VIC 3030

pointcook@ljhooker.com.au | pointcook@ljhooker.com.au



Disclaimer: All information contained therein is gathered from relevant third parties sources. We cannot guarantee or give any warranty about the information provided. Interested parties must rely solely on their own enquiries.

LJ Hooker Point Cook
(03) 9975 7080