


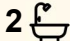
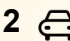
2 Keira Circuit, Werribee

## Stylish Double-Storey Living Designed for Modern Family Comfort

Delivering an exceptional balance of space, style, and everyday practicality, this beautifully designed double-storey residence presents an outstanding opportunity for families, first-home buyers, and investors seeking quality living within the highly sought-after Harpley Estate in Werribee.

Thoughtfully crafted with a functional and family-oriented layout, the home welcomes you with a dedicated front lounge, creating a warm and inviting space to relax or entertain. Further inside, the expansive open-plan living and dining zone seamlessly connects with the modern kitchen, complete with quality appliances, ample storage, generous preparation space, and a walk-in pantry designed for effortless everyday living.

Upstairs, the home continues to impress with four well-proportioned bedrooms, including a spacious master suite featuring a walk-in robe and private ensuite. The additional bedrooms are serviced by a central bathroom, while the upstairs study area offers flexibility for working from home, studying, or a quiet retreat space.

4  2  2 

**FOR SALE**  
\$650,000 - \$700,000

**VIEW**  
Sun 24th May @ 1:30PM - 2:00PM

**AGENTS**  
Quinnie Hua  
0401 661 742  
quinnie.hua@ljhooker.com.au

**AGENCY**  
LJ Hooker Dandenong City | Berwick  
(03) 9877 9750

All information contained therein is gathered from relevant third parties sources.  
We cannot guarantee or give any warranty about the information provided.  
Interested parties must rely solely on their own enquiries.

 **LJ Hooker**

Stepping outside, the covered alfresco provides the perfect setting for year-round gatherings and outdoor entertaining, complemented by a low-maintenance backyard ideal for busy modern lifestyles.

#### Key Features:

- Four spacious bedrooms
- Master suite with a walk-in robe and an ensuite
- Additional upstairs study area
- Multiple living zones
- Open-plan family and dining area
- Modern kitchen with walk-in pantry
- Quality appliances and ample storage
- Ducted heating
- Covered alfresco entertaining area
- Powder room downstairs
- Separate laundry
- Double garage with internal and external access
- Low-maintenance allotment

Positioned in a convenient and family-friendly pocket of Werribee, this home is moments from local schools, childcare facilities, parklands, public transport, and Pacific Werribee Shopping Centre. Enjoy easy access to major arterial roads and freeway connections towards Melbourne CBD and Geelong, making this an ideal location for growing families and astute investors alike.

#### DISCLAIMERS:

Every reasonable effort has been made to ensure the accuracy of the information provided; however, neither the vendor, agent, nor agency makes any representation or warranty as to its completeness or correctness.

The floor plans provided are for illustrative purposes only and should be treated as such. No liability is accepted for any inaccuracies or omissions in the details or dimensions represented.

As the property may be subject to private inspections, the sale status could change prior to scheduled Open Homes. Prospective buyers are advised to verify the current availability of the property before attending any inspection.

#### MORE DETAILS

Property ID                   A0AHWR  
Property Type               House

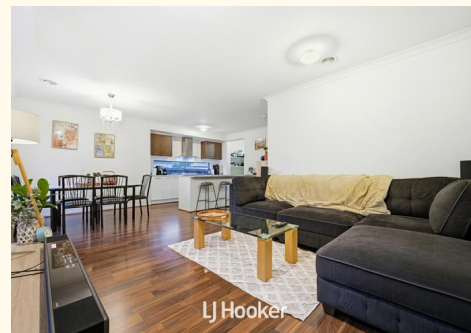
**Quinnie Hua 0401 661 742**

Sales specialist | [quinnie.hua@ljhooker.com.au](mailto:quinnie.hua@ljhooker.com.au)

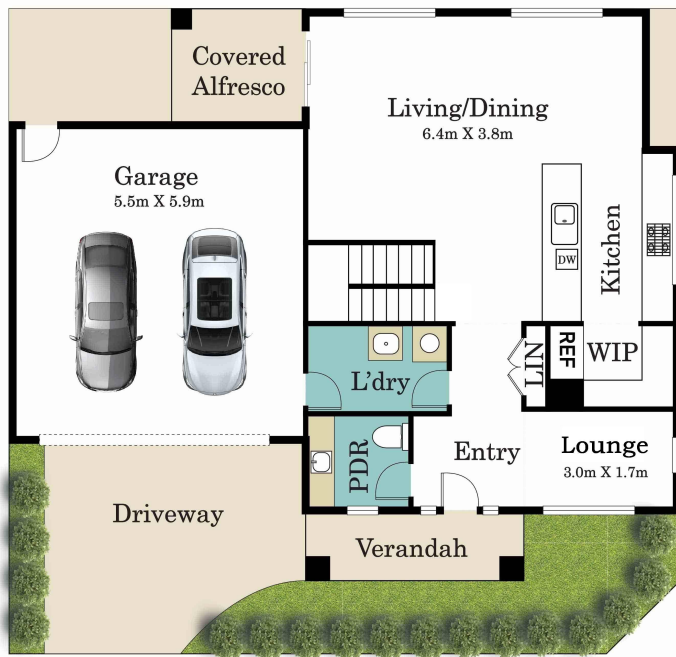
**LJ Hooker Dandenong City | Berwick (03) 9877 9750**

172 Foster Street, DANDENONG VIC 3175

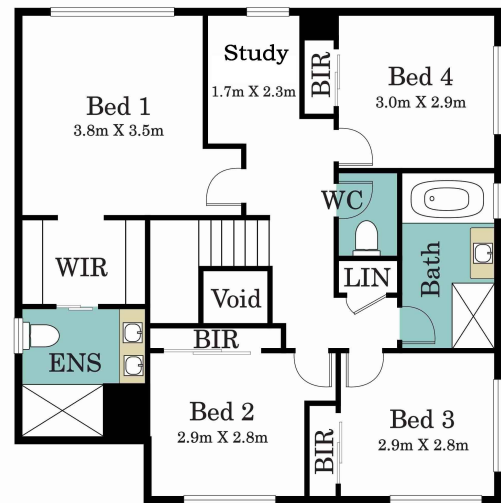
[dandenong.ljhooker.com.au](http://dandenong.ljhooker.com.au) | [dandenong@ljhooker.com.au](mailto:dandenong@ljhooker.com.au)



## Ground Floor



## First Floor



**LJ Hooker**

## 2 Keira Circuit, Werribee

\* Dimensions are approximate and for illustrative purposes only