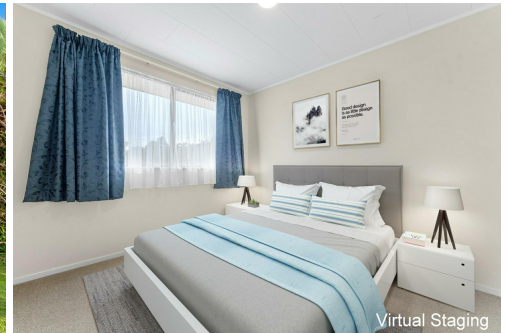


Virtual Staging



Virtual Staging

Wellsford, 32 Matheson Road

JUST WHAT YOU ARE LOOKING FOR ,

Set on a generous 1276m2 section there is plenty of room for the kids to play with mature plantings and established fruit trees, plenty of parking and a great property to add value. It offers 3 double bedrooms, a modern bathroom, and a well-designed modern kitchen. Large spacious double garage with automatic doors and a deck just perfect for the evening bbqs and sunning yourself. For any investment buyers this is a low maintenance property to add to your portfolio and is available straight away. Phone Roxanne on 0272714875 to organise a viewing. OPEN HOME SUNDAY 2pm to 2.30pm

3 

1 

4 

For Sale
\$760,000

View
Sun 1st Jun @ 2:00PM - 2:30PM

Contact
Roxanne Harrison
027 271 4875
roxanne.harrison@ljhooker.co.nz

More About this Property

Property ID	FD0HAY
Property Type	House
House Size	120 m2
Land Area	1276 m2
Including	Toilets (1)
Licensed Real Estate Agents (REAA2008)	

Roxanne Harrison 027 271 4875

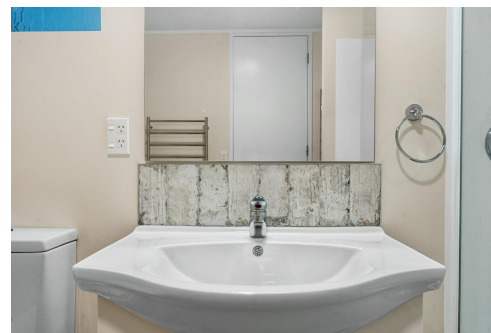
Salesperson | roxanne.harrison@ljhooker.co.nz

LJ Hooker Warkworth (09) 425 8589

Tulp & Co Limited

20 Queen Street, WARKWORTH NZ

warkworth.ljhooker.co.nz | tulpandco@ljhooker.co.nz



Disclaimer: All information contained therein is gathered from relevant third parties sources.

We cannot guarantee or give any warranty about the information provided. Interested parties must rely solely on their own enquiries.

LJ Hooker Warkworth

(09) 425 8589

Tulp & Co Limited