



Wellington Point, 72 Starkey Street

Spacious Family Living with Pool & Kids' Retreat!

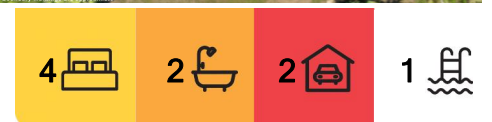
Welcome to 72 Starkey Street, Wellington Point, a beautifully designed 4-bedroom, 2-bathroom family home set on a generous 600m² block. Offering the perfect balance of space, comfort, and functionality, this home is ideal for families seeking multiple living zones, a resort-style pool, and a seamless indoor-outdoor lifestyle.

As you step inside, you'll be greeted by a light-filled, open-plan living and dining area, thoughtfully designed for modern family living. The contemporary kitchen, complete with quality appliances and ample storage, serves as the heart of the home, making meal preparation and entertaining a breeze.

The private master suite is situated near the front of the home, featuring a spacious walk-in robe and ensuite, providing a peaceful retreat. At the rear of the home, a kids' retreat is perfectly positioned alongside three additional bedrooms, offering a dedicated space for play, study, or relaxation.



Disclaimer: All information contained therein is gathered from relevant third parties sources. We cannot guarantee or give any warranty about the information provided. Interested parties must rely solely on their own enquiries.



For Sale
Please Call

View
ljhooker.com.au/BT0DF2S

Contact
Chris Cover
0450 873 117
ccover@ljhpropertycentre.com.au

LJ Hooker Property Centre
(07) 3286 2500

Movie nights will be a delight in the separate media room, while outdoor entertaining takes center stage with a covered alfresco area overlooking the sparkling in-ground pool, the ultimate setting for weekend BBQs and summer fun.

Property Features:

- *4 Spacious Bedrooms
- *Master suite with walk-in robe and private ensuite
- *Kids' retreat positioned at the rear of the home with three bedrooms
- *Dedicated media room for family movie nights
- *Light-filled, open-plan living and dining area
- *Spacious kitchen with quality appliances and ample storage
- *Outdoor entertaining area overlooking a resort-style pool
- *600m2 Block
- *2 Car Garage

Located in Wellington Point, this home is just minutes from schools, parks, shopping centres, and public transport, offering convenience and lifestyle in equal measure.

Don't miss your chance to secure this stunning family home! I look forward to meeting you at the Open Home, please feel free to reach out for more information.

Nearby Amenities:

- *Ormiston College —3 Minutes
- *Wellington Point State High School —4 Minutes
- *Wellington Point State School —3 Minutes
- *Redlands Collage —5 Minutes
- *Sheldon College —15 Minutes
- *Train Station —3 Minutes
- *Horizon Shopping Centre —2 Minutes
- *Wellington Point Farm —3 Minutes
- *Wellington Point Recreation Reserve —8 Minutes

All information contained herein is gathered from sources we consider to be reliable. However, we cannot guarantee or give any warranty about the information provided. Interested parties must solely rely on their own enquiries.

More About this Property

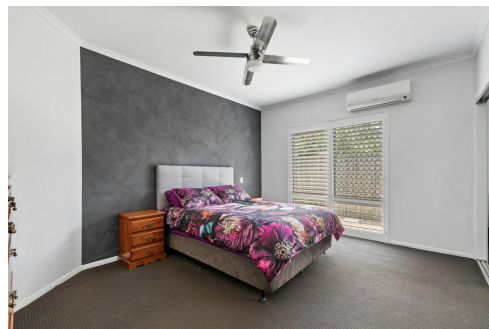
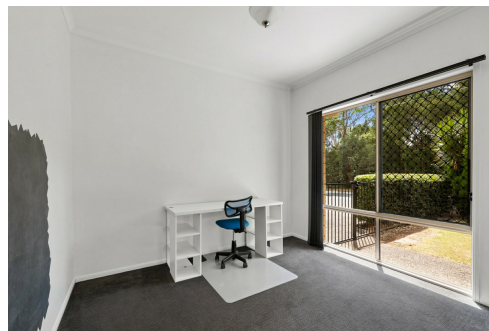
Property ID	BT0DF2S
Property Type	House
Land Area	600 m2
Including	Pool Outdoor Entertaining

Chris Cover 0450 873 117

Sales Agent | ccover@ljhpropertycentre.com.au

LJ Hooker Property Centre (07) 3286 2500

152-164 Shore St West, Raby Bay, Brisbane Qld 4163
propertycentre.ljhooker.com.au | hello@ljhpc.com.au



Disclaimer: All information contained therein is gathered from relevant third parties sources. We cannot guarantee or give any warranty about the information provided. Interested parties must rely solely on their own enquiries.

**LJ Hooker Property Centre
(07) 3286 2500**



72 Starkey Street, Wellington Point

PLEASE NOTE THIS PLAN IS FOR MARKETING PURPOSES AND IS TO BE USED AS A GUIDE ONLY. ALL MARKINGS, MEASUREMENTS, AREAS, AND LAYOUT ARE INDICATIVE ONLY AND INTERESTED PARTIES SHOULD MAKE THEIR OWN ENQUIRIES BEFORE MAKING ANY DECISIONS. FLOOR COVERINGS INDICATED ARE FOR ILLUSTRATIVE PURPOSES ONLY AND MAY NOT ACCURATELY PORTRAY ACTUAL FLOOR COVERINGS OF THE PROPERTY. NO GUARANTEES ARE MADE REGARDING THE INFORMATION CONTAINED IN THIS PLAN AND NO LIABILITY FOR ANY INACCURACIES IS ACCEPTED.