

46 Plumer Street, Wellington Point

Family Living with Space, Privacy & A Walk-to-School Lifestyle

Positioned in a tightly held, family-friendly pocket of Wellington Point, this generously sized home on a rare 802m² block delivers the perfect blend of space, functionality and lifestyle convenience.

Tucked away among quality homes, 46 Plumer Street offers a relaxed, low-maintenance lifestyle with room for the whole family to spread out-both inside and out.

One of the standout features is the easy walking access to Ormiston College via the pathway at the end of Plumer Street, connecting through to Starkey Street and leafy parkland-making the school run a breeze.

Inside, the home has been thoughtfully designed for modern family living, offering multiple living zones including a dedicated media room, separate lounge, and open-plan kitchen, dining and living area that flows effortlessly to outdoor entertaining.

Set on a generous block with side access and ample space for a pool,

4 2 4

FOR SALE

\$1,420,000

VIEW

By Appointment

AGENTS

Bruce Hutchison

0403 245 556

bruce@ljhpropertycentre.com.au

AGENCY

LJ Hooker Property Centre

(07) 3286 2500

All information contained therein is gathered from relevant third parties sources.
We cannot guarantee or give any warranty about the information provided.
Interested parties must rely solely on their own enquiries.

LJ Hooker

caravan or boat, this is a property that adapts to your lifestyle-whether you're entertaining, relaxing, or planning for the future.

Recent updates, including a solar power system, add efficiency and long-term value to this already impressive home.

Property Highlights:

Four well-proportioned bedrooms
Spacious master suite with walk-through robe and private ensuite
Multiple living areas including media room/kids' retreat and separate rumpus
Central open-plan kitchen, living and dining
Covered outdoor entertaining area overlooking the backyard
Large powered double shed with built in work bench
• conditioning to key living areas and bedrooms
Fireplace adding warmth and character to the main living zone
Security screens
Solar panel system for energy efficiency
Side access with plenty of room for additional vehicles, trailer or boat
Expansive backyard with space to add a pool

Conveniently located just minutes from local shops including Horizon Shopping Village, 5 minutes to the Wellington Point dining precinct, quality schools, parks, and the stunning waterfront with patrolled beach-this is a home that truly delivers on lifestyle.

If you've been searching for a spacious family home in a premium location with room to grow, this is an opportunity not to be missed.

Disclaimer: We have in preparing this advertisement used our best endeavours to ensure the information contained is true and accurate but make no representation or warranty as to the accuracy or completeness of the information relating to this property. Prospective purchasers should make their own enquiries in respect of any property or information in this advertisement. We accept no responsibility and disclaim all liability in respect to any errors, omissions, inaccuracies, or misstatements contained therein.

Note: This property is being sold without a price and therefore a price guide cannot be provided. The website may have filtered the property into a price bracket for website functionality purposes only.

MORE DETAILS

Property ID	BU7BF2S
Property Type	House
House Size	205 m2
Land Area	802 m2
Including	Air Conditioning Outdoor Entertaining Solar Panels

Bruce Hutchison 0403 245 556

Independent Contractor - Starsky Enterprises Pty Ltd |
bruce@ljhpropertycentre.com.au

LJ Hooker Property Centre (07) 3286 2500

152-164 Shore St West, Raby Bay, Brisbane Qld 4163
propertycentre.ljhooker.com.au | hello@ljhpc.com.au





46 Plumer Street,
Wellington Point

-  4 Bedrooms
-  2 Bathrooms
-  2 Car Spaces & 6 x 6m Shed



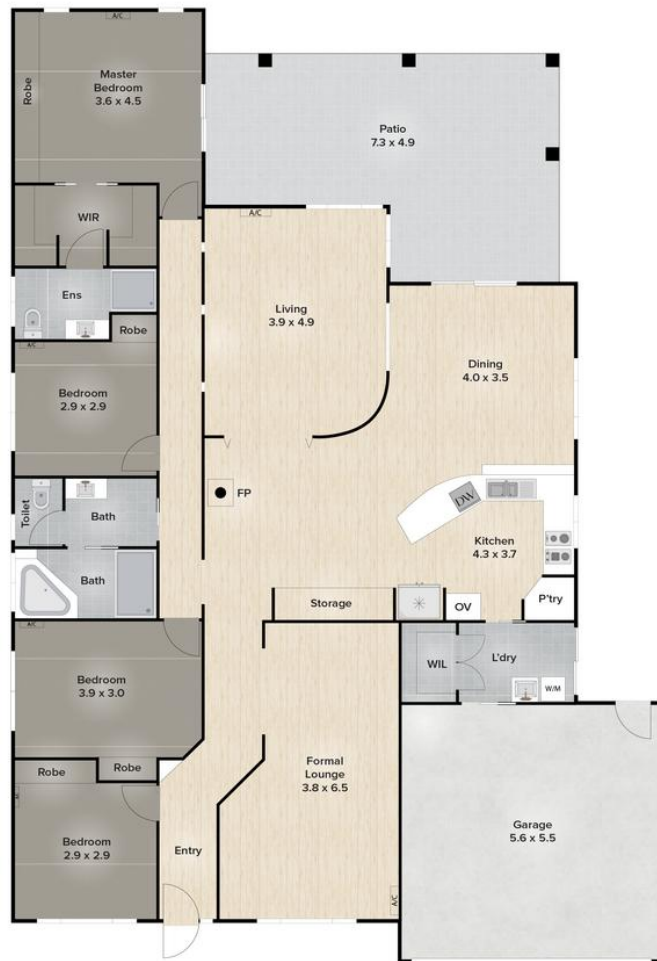
ASPECT

Whilst every effort has been made to ensure the accuracy of this floor plan, all measurements of doors, windows, rooms and other items are approximate. No responsibility is accepted for any error, omission or misstatement.

This plan is provided for illustrative purposes only and should be used as such by prospective purchasers.

All textures used within this floor plan are the copyright of Paynter & Williams.

Paynter & Williams



Floor Plan