



Weldborough, 29766 Main Road

Enchanting Weldborough

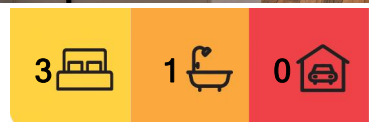
Step into a slice of Weldborough charm with this splendid Federation-style home, located at the heart of this quaint Tasmanian hamlet. Presenting 29766 Main Road, this weatherboard property not only offers a serene country change but also a golden opportunity for the astute investor .

Set upon a generous one-acre flat block, this home is steeped in tradition, boasting timber ceilings, stunning timber flooring, and two inviting wood fires that create a cosy ambiance throughout. The three bedrooms with individual heating provide ample space for a family or guests, while the Miele dishwasher, Ilive induction cooktop and walk-in shower in the bathroom add touches of modern convenience.

Perhaps one of the property's most enchanting features is the beautiful, well-established heritage orchard, with six varieties of apples, pears and plums, promising a bucolic lifestyle and the potential for a sustainable, home-grown produce business.



Disclaimer: All information contained therein is gathered from relevant third parties sources. We cannot guarantee or give any warranty about the information provided. Interested parties must rely solely on their own enquiries.



For Sale
Please Call

View
ljhooker.com.au/PG8FN1

Contact
Kate Spilsbury
0419 683 904
kspilsbury.sthelens@ljhooker.com.au

LJ Hooker St Helens
(03) 6376 2300

Only a short ride home after finishing the exhilarating Blue Tier and Big Chook Trails, the home also offers the possibility for the more adventurous to ride to Derby via the Atlas Trail. Meanwhile, the nearby Little Chook Trail, is considered by many the best MTB green run in Australia, the home is a great option for keeping everyone in the family entertained. While a soak in the claw foot bath will wash away the adventures of the day.

With its proven investment credentials, the property is situated in an ideal location for tourism, being a mere 45 minutes from the coastal haven of St Helens and only 20 minutes from the mountain biking mecca of Derby. The proximity to these destinations, along with the home's walking distance to the local heritage Weldborough hotel, with its great counter meals and beer garden, offers investors the potential for significant rental yield or the development of a boutique B&B (council approved) or development of additional cabins STCA.

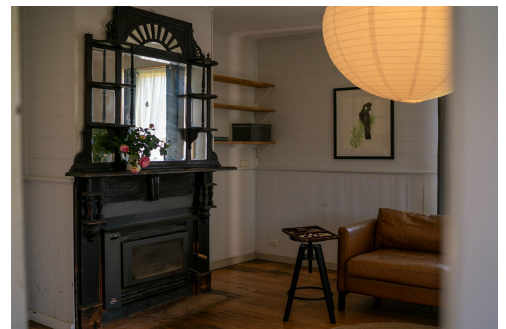
This residence is more than a house; it's a lifestyle choice and an investor's dream. Whether enjoying a sunset cocktail on the porch, or morning coffee watching the sun rise through the huge pine tree and views to the Blue Tier, the home offers a magical retreat from the world. Don't miss the chance to own a piece of Tasmanian paradise at 29766 Main Road, where country living meets development potential.

More About this Property

Property ID	PG8FN1
Property Type	House
Land Area	4047 m2
Including	Toilets (1) Fire Place Floorboards Secure Parking Water Tank

Kate Spilsbury 0419 683 904
Principal | kspilsbury.sthelens@ljhooker.com.au

LJ Hooker St Helens (03) 6376 2300
36 Cecilia Street, ST HELENS TAS 7216
sthelens.ljhooker.com.au | sthelens@ljhooker.com.au

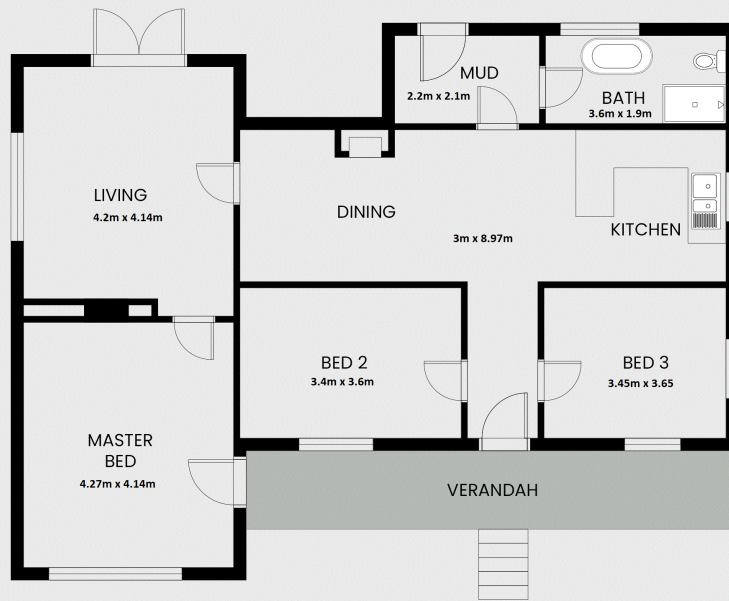


LJ Hooker St Helens
(03) 6376 2300

Disclaimer: All information contained therein is gathered from relevant third parties sources. We cannot guarantee or give any warranty about the information provided. Interested parties must rely solely on their own enquiries.

29766 Main Road, Weldborough

This floor plan including furniture, fixture measurements and dimensions are approximate and for illustrative purposes only. LJ Hooker gives no guarantee, warranty or representation as to the accuracy and layout. All enquiries must be directed to the agent, vendor or party representing this floor plan.



LJ Hooker St Helens
(03) 6376 2300

Disclaimer: All information contained therein is gathered from relevant third parties sources. We cannot guarantee or give any warranty about the information provided. Interested parties must rely solely on their own enquiries.