



6 Bindley Crescent, Weir Views

Park-Facing 4-Bedroom Home - Nest or Invest

Perfectly positioned opposite a beautiful park, this modern 4-bedroom, 2-bathroom home at 6 Bindley Crescent presents an outstanding lifestyle opportunity for first-home buyers and savvy investors alike.

Enjoy uninterrupted park views and a peaceful outlook while still benefiting from low-maintenance living in one of Melbourne's fastest-growing suburbs. Inside, the home features a light-filled open-plan living and dining area, ducted heating throughout, and a split-system in the main living zone to ensure year-round comfort.

The master bedroom includes a walk-in robe and private ensuite, while the remaining bedrooms are generously sized and fitted with built-in robes. Outdoors, a spacious backyard provides the perfect setting for entertaining, children to play, or future landscaping potential. Completing the home is a double garage with convenient internal access.

Location Highlights:

- Park directly across the street - ideal for families and an active

4 2 2

FOR SALE
\$549,000- \$599,000

VIEW
Sat 21st Feb @ 10:00AM - 10:30AM

AGENTS
Yohanna Saad
0423 523 061
yohanna.saad@ljhmilton.com.au

Anuj Narwal
0410 120 588
anuj.narwal@ljhmilton.com.au

AGENCY
LJ Hooker Melton
(03) 8797 5588

All information contained therein is gathered from relevant third parties sources.
We cannot guarantee or give any warranty about the information provided.
Interested parties must rely solely on their own enquiries.

LJ Hooker

outdoor lifestyle

- St Lawrence of Brindisi Catholic Primary School - approx. 3.2km
- New Murrum Primary School - approx. 1.9km
- Aspire Early Education & Kindergarten - approx. 950m
- Al Iman College - approx. 2.1km
- Melton South Primary School - approx. 4km
- Melton Secondary College - approx. 4.4km
- Opalia Shopping Centre - approx. 2.4km
- Melton South Train Station - approx. 3.3km
- Easy access to the Western Freeway

Whether you're entering the property market or expanding your investment portfolio, this park-facing home offers modern comfort, family-friendly design, and a premium outlook rarely found in this price bracket.

Secure a lifestyle-focused home in a high-growth pocket of Weir Views - opportunities like this don't last long!

Call Yohanna Saad on 0423 523 061 to inspect today!

DISCLAIMER: All stated dimensions are approximate only. Particulars given are for general information only and do not constitute any representation on the part of the vendor or agent.

Please see the below link for an up-to-date copy of the Due Diligence Check List:

<http://www.consumer.vic.gov.au/duediligencechecklist>

MORE DETAILS

Property ID	M3HHWU
Property Type	House
Land Area	406 m2
Including	Ensuite
	Toilets (2)

Yohanna Saad 0423 523 061

Sales Agent | yohanna.saad@ljhmelton.com.au

Anuj Narwal 0410 120 588

Director | anuj.narwal@ljhmelton.com.au

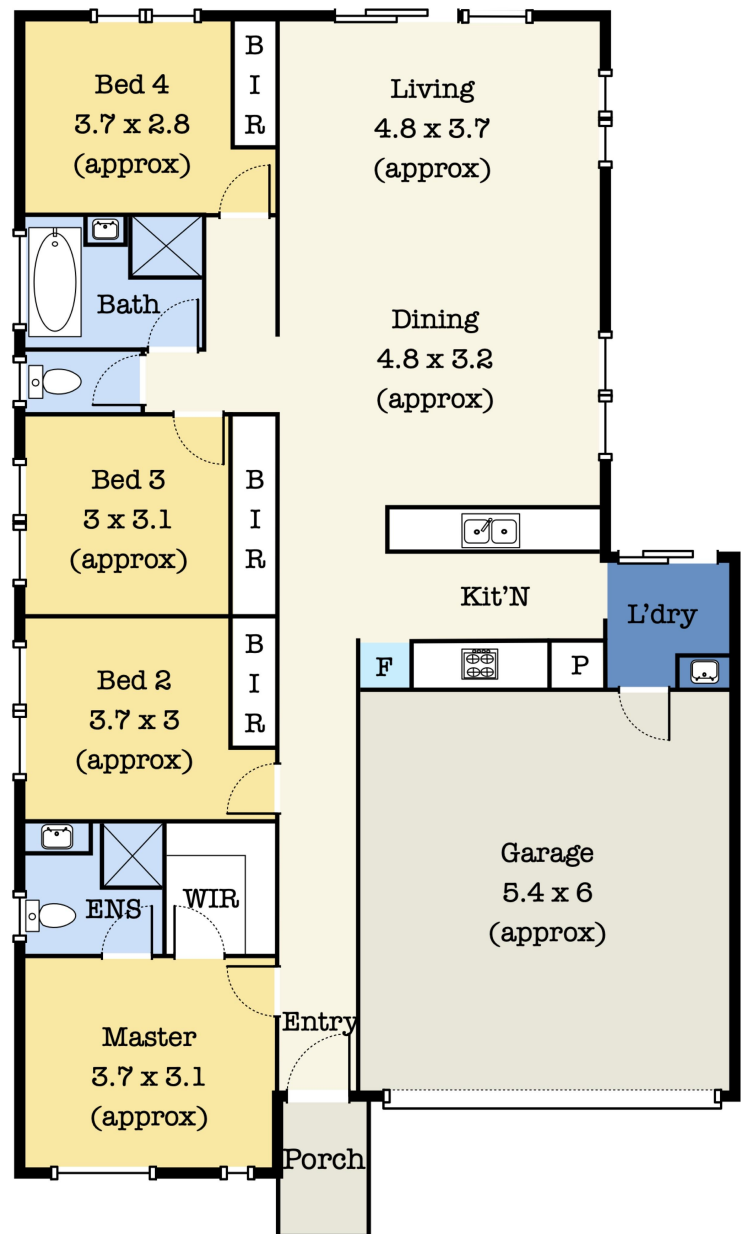
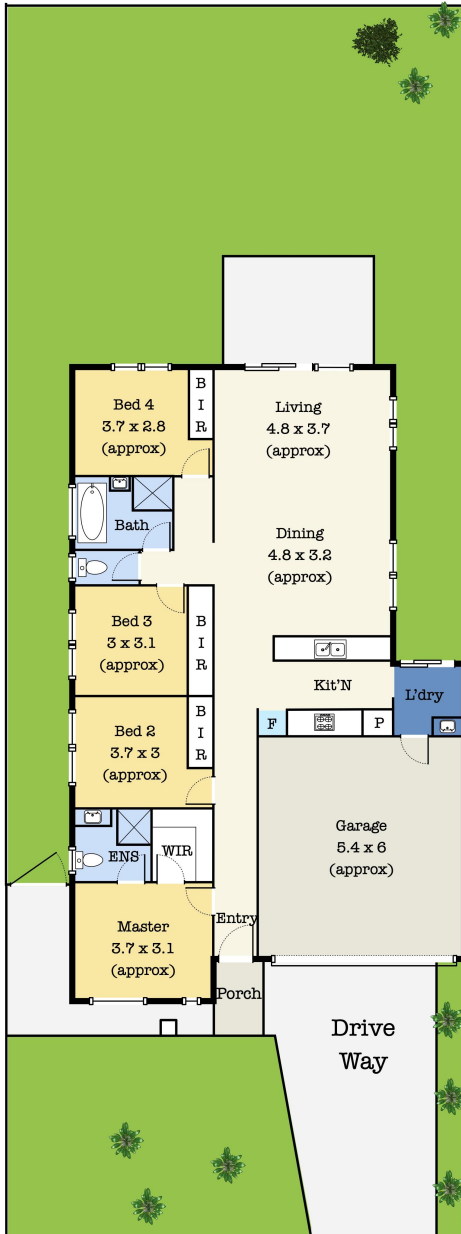
LJ Hooker Melton (03) 8797 5588

307 High Street, MELTON VIC 3337

melton.ljhooker.com.au | admin@ljhmelton.com.au



Floor Plan



6 Bindley Cres, Weir Views VIC 3338

*This floorplan is for illustration purposes only and no warranty is given to its accuracy. Purchasers are advised to carry out their own investigations.