



10 Athena Road, Weir Views

Walking Distance to Amenities at Your Doorstep!

Welcome to 10 Athena Road, Weir Views - a stylish and low-maintenance home designed for comfortable family living. Ideally positioned close to parks, schools, Opalia Shopping Centre, and public transport, this property is perfect for first-home buyers, downsizers, and savvy investors seeking strong growth in a prime location.

Built in 2024, this beautifully presented home features sleek floorboards throughout and a bright open-plan living and dining area that seamlessly connects to the contemporary kitchen - complete with stone benchtops, 900mm stainless steel appliances, and ample storage.

The master bedroom offers a private ensuite and built-in robe, while the remaining two bedrooms also include built-in robes and are serviced by a stylish central bathroom. A European laundry has been cleverly integrated to maximise space and convenience.

Step outside to a low-maintenance rear yard, offering the perfect blank canvas for outdoor dining, gardening, or simply relaxing on the weekend.

3  2  2 

FOR SALE
Contact Agent!

AGENTS

Yohanna Saad
0423 523 061
yohanna.saad@ljhmelton.com.au

Anuj Narwal
0410 120 588
anuj.narwal@ljhmelton.com.au

AGENCY

LJ Hooker Melton
(03) 8797 5588

All information contained therein is gathered from relevant third parties sources.
We cannot guarantee or give any warranty about the information provided.
Interested parties must rely solely on their own enquiries.

 **LJ Hooker**

Additional features include:

- Heating and cooling for year-round comfort
- Double lock-up garage with secure internal access
- Modern fixtures and finishes throughout
- Neutral colour palette to suit any décor

Set in a thriving and family-friendly community with ongoing development and future infrastructure, this move-in-ready home delivers the perfect blend of comfort, convenience, and incredible value.

Contact Yohanna Saad on 0423 523 061 to inspect today! - Opportunities like this don't last long!

DISCLAIMER: All stated dimensions are approximate only. Particulars given are for general information only and do not constitute any representation on the part of the vendor or agent.

Please see the below link for an up-to-date copy of the Due Diligence Check List:

<http://www.consumer.vic.gov.au/duediligencechecklist>

MORE DETAILS

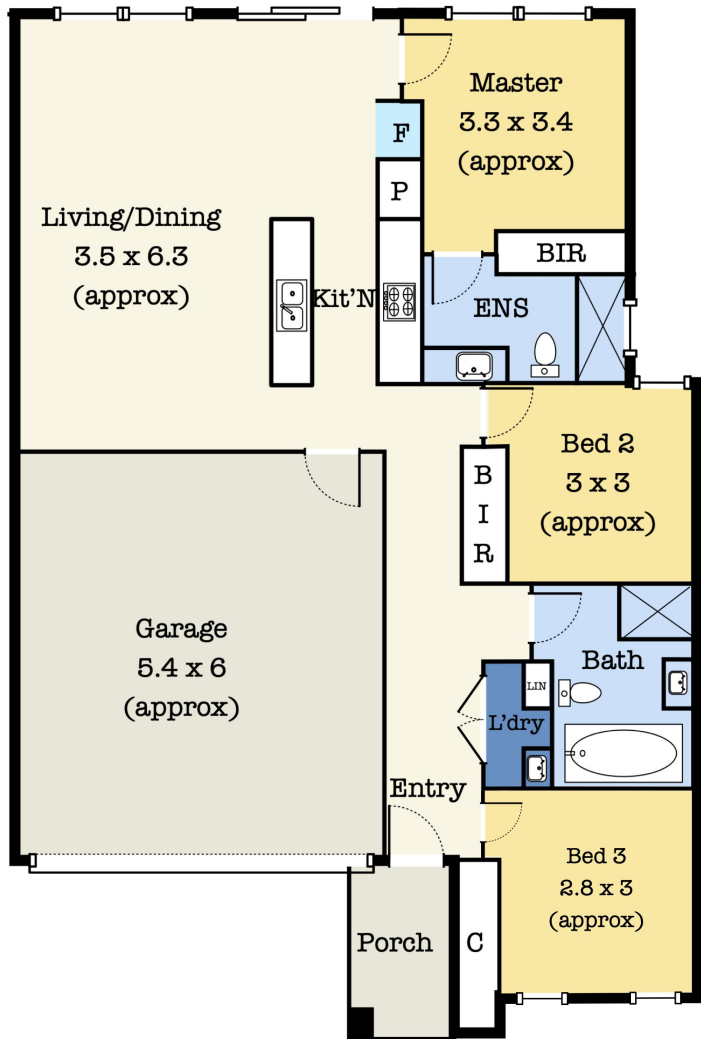
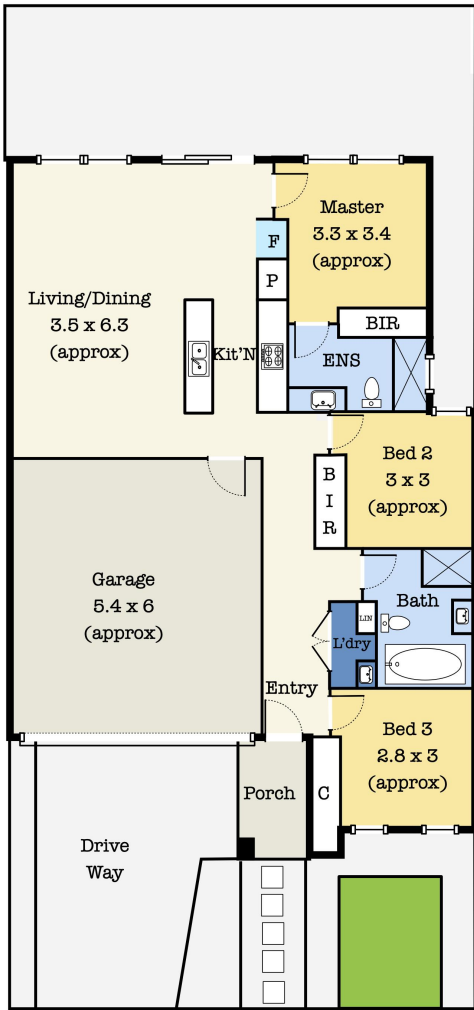
Property ID	RH1HWU
Property Type	House
Land Area	220 m ²
Including	Ensuite Toilets (2)

Yohanna Saad 0423 523 061
Sales Agent | yohanna.saad@ljhmelton.com.au
Anuj Narwal 0410 120 588
Director | anuj.narwal@ljhmelton.com.au

LJ Hooker Melton (03) 8797 5588
307 High Street, MELTON VIC 3337
melton.ljhooker.com.au | admin@ljhmelton.com.au



Floor Plan



10 Athena Rd, Weir Views VIC 3338

*This floorplan is for illustration purposes only and no warranty is given to its accuracy. Purchasers are advised to carry out their own investigations.