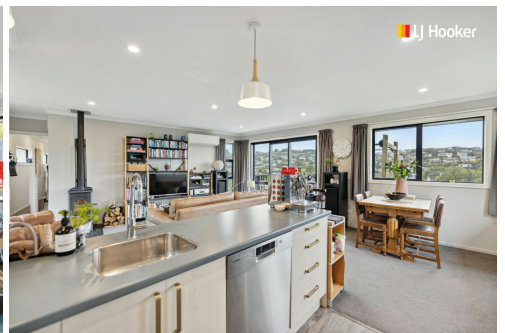


**SOLD**



## Waverley, 1/24 Archibald Street

Near New in Waverley!

Imagine stepping into your dream home...nestled in a peaceful setting surrounded by lush bush, yet just a stone's throw from all the essentials. This near-new two bedroom beauty built in 2021 offers the perfect blend of comfort and convenience, ideal for those seeking a warm, low-maintenance lifestyle.

As you walk through the door, you're welcomed into a spacious open plan living area, where the light flows freely, creating a bright and airy feel. The home has been designed with ease in mind- both bedrooms have dual access to the sleek, modern bathroom, ensuring privacy and practicality for everyone. The main bedroom is a true retreat, featuring a generous walk-in robe, adding a touch of luxury to your daily routine.

And it is not just the living spaces that impress. Beneath the home lies a large, basement workshop area offering ample storage for everything from seasonal gear to keepsakes. Whether you are downsizing or simply looking for the extra room without the clutter, this

2 

1 

1 

**For Sale**

Enquiries Over \$575,000

**View**

[ljhooker.co.nz/3NWQGDS](https://ljhooker.co.nz/3NWQGDS)

**Contact**

**Toni Curline**

0212225469

[toni@ljhdunedin.co.nz](mailto:toni@ljhdunedin.co.nz)

**Reagan Curline**

0278464545

[reagan@ljhdunedin.co.nz](mailto:reagan@ljhdunedin.co.nz)



space will meet your needs.

Beyond the home's walls lies its prime location. Imagine a life where everything you need is just a short stroll away- local schools, the kindy, and the vibrant Waverley community hub. Picture mornings spent grabbing a coffee at the cafe, running errands at the doctors or hairdressers or even visiting the mechanics and dairy all within metres of your doorstep. This home is perfect for those who value lock and leave lifestyle. Offering freedom to explore, travel, and live without the worry of upkeep.

Compact, warm, and surrounded by nature. Making this the ultimate sanctuary in the heart of convenience.

Ready to make this yours? Reach out today to experience the magic first hand.

## More About this Property

<b>Property ID</b>	3NWQGDS
<b>Property Type</b>	House
<b>Land Area</b>	1120 m <sup>2</sup>
<b>Licensed Real Estate Agents (REAA2008)</b>	

**Toni Curline 0212225469**

Licensee | [toni@ljhdunedin.co.nz](mailto:toni@ljhdunedin.co.nz)

**Reagan Curline 0278464545**

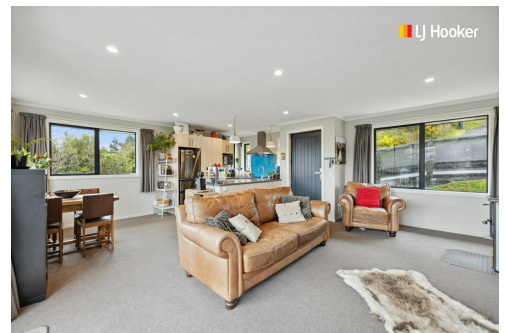
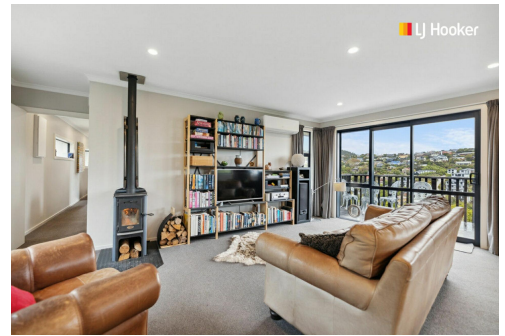
Licensee | [reagan@ljhdunedin.co.nz](mailto:reagan@ljhdunedin.co.nz)

**LJ Hooker Dunedin (03) 470 1370**

Wayne Graham Realty Ltd

63 Musselburgh Rise, DUNEDIN 9013

[dunedin.ljhooker.co.nz](mailto:dunedin.ljhooker.co.nz) | [dunedin@ljhdunedin.co.nz](mailto:dunedin@ljhdunedin.co.nz)



**Disclaimer:** All information contained therein is gathered from relevant third parties sources. We cannot guarantee or give any warranty about the information provided. Interested parties must rely solely on their own enquiries.

**LJ Hooker Dunedin**  
**(03) 470 1370**  
Wayne Graham Realty Ltd