

**SOLD**



## Waverley, 9 Connell Street

### An Affordable Waverley Home with Harbour Views

This beautifully renovated 4 bedroom, 2 bathroom home in the highly sought after suburb of Waverley, is nestled in an elevated position, and commands breathtaking views of the harbour and the city skyline, a sight that will greet you every day.

In recent years the home was updated to perfection. This property is not just about the stunning views, it's also about the incredible interior space. You'll immediately notice the bright, sunny atmosphere and warm, inviting feel. The open-plan living areas seamlessly flow into the outdoor spaces, ideal for everything from relaxed family moments to entertaining friends. A built in entertainment system adds to the vibe of this home.

Step outside, and you'll find gardens that are nothing short of immaculate.

The heart of the home is the modern kitchen, designed for both function and style.

Whether you're preparing a family meal or hosting a gathering, this space makes cooking a joy.

With four spacious bedrooms, including a master retreat that boasts panoramic views, there's plenty of room for the whole family to spread out and relax. And with two beautifully

4 

2 

2 

**For Sale**

Enquiries Over \$890,000

**View**

[ljhooker.co.nz/3PEUGDS](http://ljhooker.co.nz/3PEUGDS)

**Contact**

**Geraldine Hermens**

027 473 0922

[Geraldine@ljhdunedin.co.nz](mailto:Geraldine@ljhdunedin.co.nz)

**Mikayla Bennetts**

020 4131 0103

[mikayla@ljhdunedin.co.nz](mailto:mikayla@ljhdunedin.co.nz)



renovated bathrooms, your daily routines feel like a luxury experience.

And it's not just the home that's stunning, the location speaks for itself. Imagine waking up every morning to the serene beauty of the harbour, while still being just minutes away from local schools, parks, and shops. Beautifully landscaped and easy to maintain, the garden is perfect for those who love to enjoy the outdoors without the hassle of constant upkeep. This is more than just a house, it's a place where you can build lasting memories, surrounded by beauty, comfort, and convenience. With meticulous gardens, incredible views, and a warm, inviting interior, this home has everything your family needs to thrive. The home emphasizes both the practical and the emotional appeal.

Don't miss your chance to make this stunning Waverley home your own.

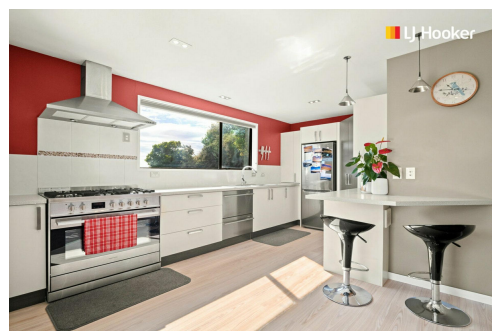
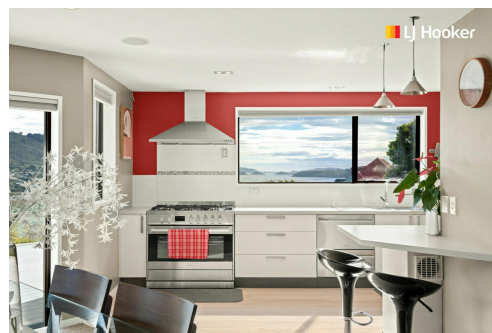
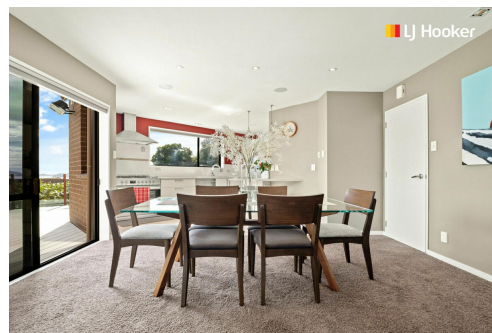
Relocating owners are ready to move North, be quick, this is excellent buying in Waverley.

## More About this Property

|   |                             |
|---|-----------------------------|
| <b>Property ID</b>                            | 3PEUGDS                     |
| <b>Property Type</b>                          | House                       |
| <b>Land Area</b>                              | 639 m2                      |
| <b>Including</b>                              | Dishwasher<br>Remote Garage |
| <b>Licensed Real Estate Agents (REAA2008)</b> |                             |

**Geraldine Hermens 027 473 0922**  
 Licensee | Geraldine@ljhdunedin.co.nz  
**Mikayla Bennetts 020 4131 0103**  
 Licensee | mikayla@ljhdunedin.co.nz

**LJ Hooker Dunedin (03) 470 1370**  
 Wayne Graham Realty Ltd  
 63 Musselburgh Rise, DUNEDIN 9013  
 dunedin.ljhooker.co.nz | dunedin@ljhdunedin.co.nz



**Disclaimer:** All information contained therein is gathered from relevant third parties sources.  
 We cannot guarantee or give any warranty about the information provided. Interested parties must rely solely on their own enquiries.

**LJ Hooker Dunedin**  
**(03) 470 1370**  
 Wayne Graham Realty Ltd

