

Waverley, 33 Belford Street

Price Reduced - Be Quick

Nestled in the sought-after family neighbourhood of Waverley, this spacious home sits on a generous 973m2 section, offering ample space both indoors and out. As you step onto the property, you're immediately greeted by stunning views that stretch across the cityscape and harbour basin, creating a picturesque backdrop.

The exterior of the home exudes charm, with its well-maintained landscaping and the possibilities to renovate are endless. With three bedrooms as well as the option to utilize a fourth room as either a bedroom or additional living space, this home easily accommodates families of all sizes.

The living areas are light-filled and welcoming, perfect for both relaxation and entertaining and the family dining area is open plan to the kitchen.

But perhaps the most enticing feature of this property is the potential it holds. Whether you're dreaming of a contemporary renovation to elevate its charm or envisioning a complete redesign this home provides a blank canvas for your creativity to flourish. Outside, the expansive section offers endless possibilities for outdoor living & subdivision

3

1

3

For Sale

Enquiries Over \$550,000

View

ljhooker.co.nz/3N26GDS

Contact

Geraldine Hermens

027 473 0922

Geraldine@ljhdunedin.co.nz

Amelia Hermens

022 415 2359

amelia@ljhdunedin.co.nz



Disclaimer: All information contained therein is gathered from relevant third parties sources.

We cannot guarantee or give any warranty about the information provided. Interested parties must rely solely on their own enquiries.

LJ Hooker Dunedin

(03) 470 1370

Wayne Graham Realty Ltd

potential (subject to DCC approval).

With its prime location and undeniable potential, this home is a rare find in the highly desirable Waverley neighbourhood, offering the opportunity to create the lifestyle you've always dreamed of.

Act quickly, this won't last!

More About this Property

Property ID	3N26GDS
Property Type	House
Land Area	973 m ²
Licensed Real Estate Agents (REAA2008)	

Geraldine Hermens 027 473 0922

Licensee | Geraldine@ljhdunedin.co.nz

Amelia Hermens 022 415 2359

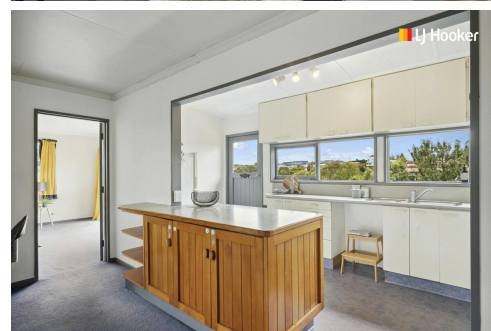
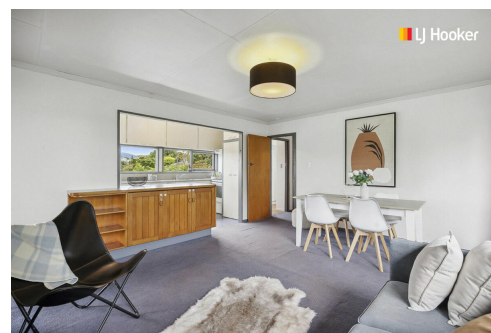
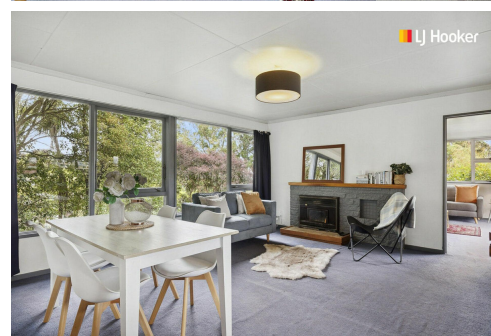
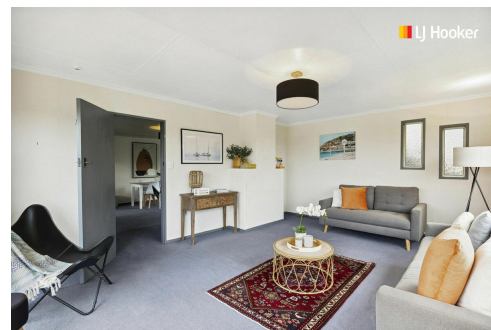
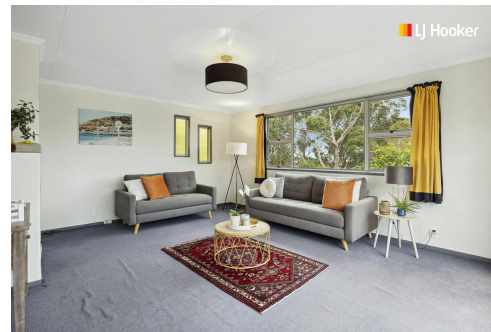
Licensee | amelia@ljhdunedin.co.nz

LJ Hooker Dunedin (03) 470 1370

Wayne Graham Realty Ltd

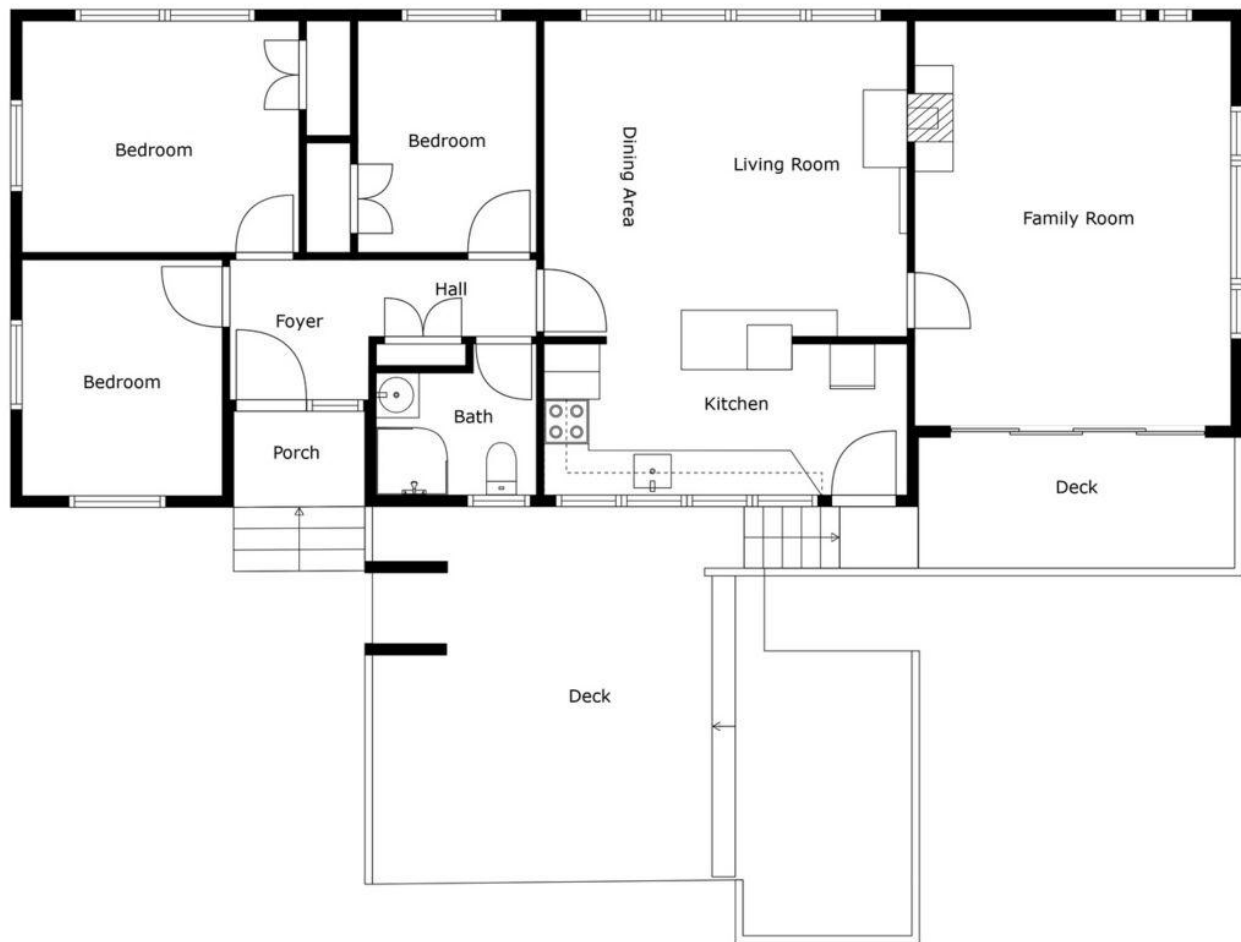
63 Musselburgh Rise, DUNEDIN 9013

dunedin.ljhooker.co.nz | dunedin@ljhdunedin.co.nz



Disclaimer: All information contained therein is gathered from relevant third parties sources. We cannot guarantee or give any warranty about the information provided. Interested parties must rely solely on their own enquiries.

LJ Hooker Dunedin
(03) 470 1370
Wayne Graham Realty Ltd



Sizes and dimensions are approximate, actual may vary