

SOLD



Waverley, 195 Larnach Road

Sun, Shelter & Space!

Nestled in this sought-after location stands a charming 1950's home awaiting its new owners. This 3-bedroom, 2-bathroom home embodies the essence of comfortable living, offering approximately 210m² of generous space.

With timeless elegance of an era gone by while seamlessly integrating modern comforts, its expansive living areas create a warm and inviting atmosphere, perfect for both relaxation and entertainment.

What sets this home apart are the views of the harbour that greet you from select vantage points, a daily reminder of the beauty that surrounds you. The spacious living areas effortlessly flow, creating a seamless indoor-outdoor experience onto a beautifully crafted decking area. This flow encourages outdoor gatherings and quiet moments alike, all while enjoying the serene surroundings.



Disclaimer: All information contained therein is gathered from relevant third parties sources. We cannot guarantee or give any warranty about the information provided. Interested parties must rely solely on their own enquiries.

3 

2 

2 

For Sale

Negotiation

View

ljhooker.co.nz/3MJQGDS

Contact

Geraldine Hermens

027 473 0922

Geraldine@ljhdunedin.co.nz

Amelia Hermens

022 415 2359

amelia@ljhdunedin.co.nz

LJ Hooker Dunedin

(03) 470 1370

Wayne Graham Realty Ltd

A standout feature of this property is its substantial basement garage, providing ample space for storage and secure parking, ensuring convenience.

Nestled in this family-friendly neighbourhood, you're just a stone's throw away from Grants Braes School & Kindergarten, offering convenience for families seeking quality education nearby. Additionally, the proximity to Tuppence Cafe adds a touch of local flavour, perfect for casual meetups or morning coffee rituals.

The well-maintained section offers a private oasis for relaxation and outdoor activities, making it an ideal canvas for gardening enthusiasts.

In summary, this property encapsulates the quintessential elements of comfortable living: a spacious layout, historic charm, breathtaking views, and proximity to key amenities. Don't miss the opportunity to make this your dream home in the heart of Waverley.

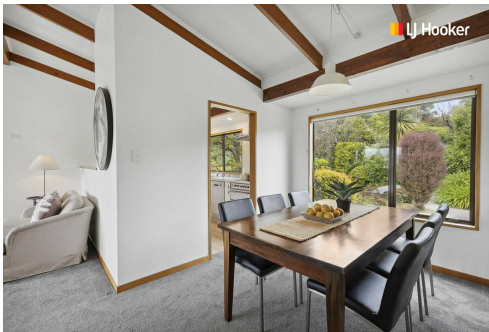
Contact us today for a private viewing and seize the chance to embrace the beauty and comfort this home has to offer.

More About this Property

Property ID	3MJQGDS
Property Type	House
Land Area	916 m²
Including	Remote Garage
Licensed Real Estate Agents (REAA2008)	

Geraldine Hermens 027 473 0922
Licensee | Geraldine@ljhdunedin.co.nz
Amelia Hermens 022 415 2359
Licensee | amelia@ljhdunedin.co.nz

LJ Hooker Dunedin (03) 470 1370
Wayne Graham Realty Ltd
63 Musselburgh Rise, DUNEDIN 9013
dunedin.ljhooker.co.nz | dunedin@ljhdunedin.co.nz



Disclaimer: All information contained therein is gathered from relevant third parties sources. We cannot guarantee or give any warranty about the information provided. Interested parties must rely solely on their own enquiries.

LJ Hooker Dunedin
(03) 470 1370
Wayne Graham Realty Ltd



Sizes and dimensions are approximate, actual may vary