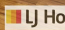





 LJ Hooker



 LJ Hooker



 LJ Hooker



 LJ Hooker

Wattle Grove, 10 Freeduff Drive

Welcome to 10 Freeduff Drive, Wattle Grove

Sheenu is delighted to present this beautiful 4-bedroom, 2-bathroom home, built in 2003, situated on a 533 sqm lot with approximately 285 sqm of covered living space, including alfresco, garage, and patio areas. This residence offers a peaceful retreat in a lively community, ideal for families with its proximity to schools, shopping, and easy access to the airport.

Key Features

Bedrooms: 4

Bathrooms: 2

Land Size: 533 sqm

Covered Living Space: Approximately 285 sqm, including alfresco, garage, and patio

Outdoor: Large alfresco and patio areas perfect for entertaining

Storage: Two spacious, massive sheds in the backyard for organized and versatile use.

Workshop: Equipped with a power connection for all your projects



For Sale
Please Call

View
ljhooker.com.au/1JVDGQ5

Contact
Sheenu Insan
0456 208 107
sheenu.insan@ljhooker.com.au



LJ Hooker Kwinana
(08) 9439 3333

Disclaimer: All information contained therein is gathered from relevant third parties sources. We cannot guarantee or give any warranty about the information provided. Interested parties must rely solely on their own enquiries.

Comfort: Evaporative air conditioning for cooling
 Energy Efficiency: 1.5 kW solar installed
 Parking: Extra paved driveway space for secure parking
 Yard: Low-maintenance yard with artificial turf in the front and back garden.

Property Highlights

Spacious Living: Four bedrooms and two bathrooms providing ample room for the family
 Open-Plan Design: Expansive kitchen, dining, and living area for seamless everyday living
 Convenient Laundry: Functional separate laundry room
 Low-Maintenance Yard: Easy-to-care-for rear yard
 High Rental Value: Attractive rental potential for investors

Location Highlights

Schools: Near award-winning Wattle Grove Primary School and high schools including Rehoboth Christian College, Sevenoaks Senior College, St Norbert College, Darling Range Sports College, and Kenwick School
 Early Learning Centres: Close to Sonas Early Learning & Care Wattle Grove, YMCA East Cannington Early Learning Centre, Cuddles Early Learning & Childcare Beckenham, Beckenham Early Learning, and Seeds Child Care and Early Learning Centre
 Shopping: Conveniently located near Wattle Grove Shopping Centre, Hale Village Shopping Centre, and Westfield Carousel Shopping Centre
 Airport: Close proximity to the airport for easy travel

Rates

Shire Rates: Approximately \$2,450 per year

Water Rates: Approximately \$1,334.95 per year

Experience comfortable living at 10 Freeduff Drive, Wattle Grove. This home offers a perfect blend of space, convenience, and comfort in a vibrant community. Don't miss out! Contact Sheenu at 0456 208 107 or sheenu.insan@ljhooker.com.au for details.

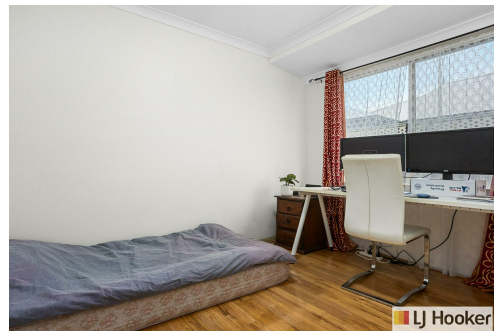
Disclaimer: We've crafted this advertisement to the best of our abilities using information provided by the seller. While we strive for accuracy, buyers are encouraged to conduct their own research and inspections to verify the property's details.

More About this Property

| | |
|----------------------|--------------------|
| Property ID | 1JVDGQ5 |
| Property Type | House |
| House Size | 128 m ² |
| Land Area | 533 m ² |

Sheenu Insan 0456 208 107
 Sales Consultant | sheenu.insan@ljhooker.com.au

LJ Hooker Kwinana (08) 9439 3333
 Unit 4, 40-46 Meares Avenue, KWINANA WA 6167
 kwinana.ljhooker.com.au | reception@ljhkwinana.com.au



LJ Hooker Kwinana
(08) 9439 3333

Disclaimer: All information contained therein is gathered from relevant third parties sources. We cannot guarantee or give any warranty about the information provided. Interested parties must rely solely on their own enquiries.