

Wattle Grove, 16 Fernleaf Court

A Family Delight

Before even stepping foot inside this wonderful brick home, you'll be mesmerized by its peaceful, family-friendly location.

As you step inside, you'll be greeted by a bright and light-filled floorplan. The spacious formal lounge creates an inviting atmosphere, ideal for relaxing or entertaining guests.

- Well-appointed kitchen & abundance of cupboard space & quality appliances
- Generous bedrooms & 2 with built-in wardrobes
- Master bedroom with ensuite & walk-in robe
- Well-maintained bathroom servicing additional bedrooms
- Sideyard perfect for entertaining & low-maintenance and family-friendly
- Comfortable year-round living with split system cooling
- Freshly painted interiors & move-in ready
- Single lock-up garage for secure parking



For Sale
Please Call _____

View
ljhooker.com.au/ZBDGRH

Contact
Ilice Dimeski
0424 198 337
idimeski.casula@ljhooker.com.au



LJ Hooker Casula
(02) 9601 8333

Disclaimer: All information contained therein is gathered from relevant third parties sources. We cannot guarantee or give any warranty about the information provided. Interested parties must rely solely on their own enquiries.

- Located on 383.1m²; block – easy access to local amenities
Public transport, schools, shopping centers, parks, and M5 Motorway nearby

This home offers the perfect blend of comfort, convenience, and lifestyle!

More About this Property

Property ID	ZBDGRH
Property Type	House
Land Area	383 m2
Including	Ensuite Air Conditioning Toilets (2) Built-in-Robes Secure Parking Fully Fenced

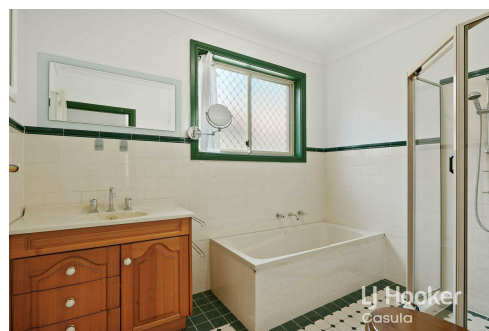
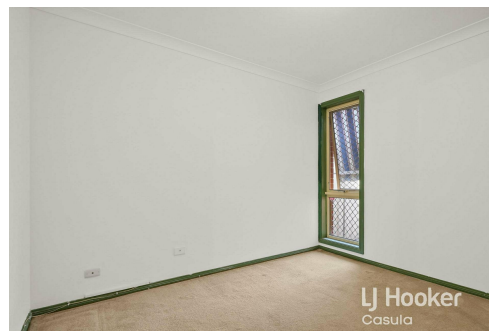
Iice Dimeski 0424 198 337

Principal | idimeski.casula@ljhooker.com.au

LJ Hooker Casula (02) 9601 8333

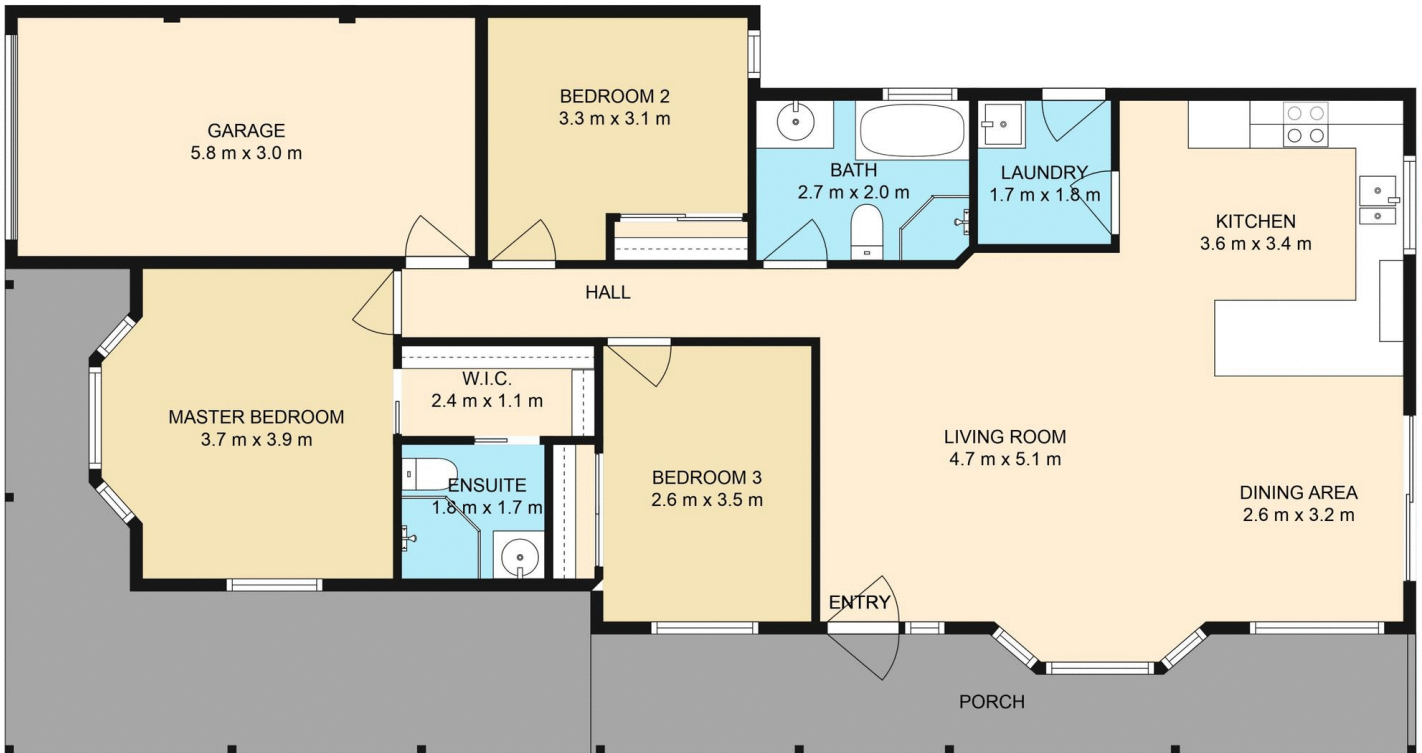
62 Marsh Parade, CASULA NSW 2170

casula.ljhooker.com.au | casula@ljhooker.com.au



Disclaimer: All information contained therein is gathered from relevant third parties sources.
We cannot guarantee or give any warranty about the information provided. Interested parties must rely solely on their own enquiries.

LJ Hooker Casula
(02) 9601 8333



16 Fernleaf Court, Wattle Grove

Disclaimer : Floorplans are approximate. Actual may vary.



LJ Hooker Casula
(02) 9601 8333

Disclaimer: All information contained therein is gathered from relevant third parties sources. We cannot guarantee or give any warranty about the information provided. Interested parties must rely solely on their own enquiries.